


Product datasheet

Anti-Transferrin antibody - Serum Loading Control ab88165

[2 References](#) [4 Images](#)

Overview

Product name	Anti-Transferrin antibody - Serum Loading Control
Description	Rabbit polyclonal to Transferrin - Serum Loading Control
Host species	Rabbit
Tested applications	Suitable for: ICC/IF, WB, IHC-P
Species reactivity	Reacts with: Human Predicted to work with: Monkey, Orangutan 
Immunogen	Synthetic peptide. This information is proprietary to Abcam and/or its suppliers.
Positive control	Recombinant human Transferrin protein (ab83560) can be used as a positive control in WB. This antibody gave a positive signal in HepG2 whole cell lysate as well as the following tissue lysates: Human brain; Human liver; Human heart; Human lung; Human kidney. This antibody gave a positive result in IHC in the following FFPE tissue: Human Liver.
General notes	<p>The Life Science industry has been in the grips of a reproducibility crisis for a number of years. Abcam is leading the way in addressing this with our range of recombinant monoclonal antibodies and knockout edited cell lines for gold-standard validation. Please check that this product meets your needs before purchasing.</p> <p>If you have any questions, special requirements or concerns, please send us an inquiry and/or contact our Support team ahead of purchase. Recommended alternatives for this product can be found below, along with publications, customer reviews and Q&As</p>

Properties

Form	Liquid
Storage instructions	Shipped at 4°C. Store at +4°C short term (1-2 weeks). Upon delivery aliquot. Store at -20°C or -80°C. Avoid freeze / thaw cycle.
Storage buffer	pH: 7.40 Preservative: 0.02% Sodium azide Constituent: PBS

Batches of this product that have a concentration < 1mg/ml may have BSA added as a stabilising agent. If you would like information about the formulation of a specific lot, please contact our

scientific support team who will be happy to help.

Purity	Immunogen affinity purified
Clonality	Polyclonal
Isotype	IgG

Applications

The Abpromise guarantee Our **Abpromise guarantee** covers the use of ab88165 in the following tested applications.

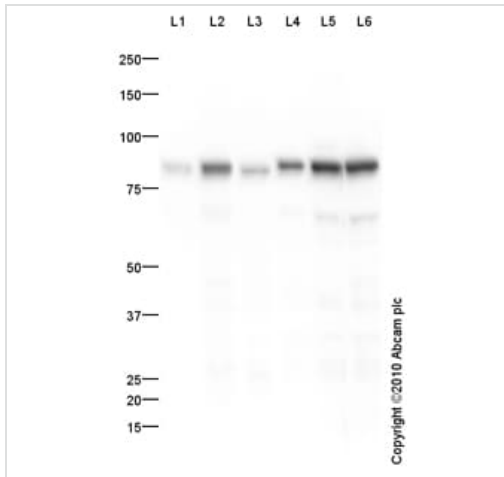
The application notes include recommended starting dilutions; optimal dilutions/concentrations should be determined by the end user.

Application	Abreviews	Notes
ICC/IF		Use a concentration of 5 µg/ml.
WB		Use a concentration of 1 µg/ml. Detects a band of approximately 83 kDa (predicted molecular weight: 77 kDa).
IHC-P		Use a concentration of 1 µg/ml. Perform heat mediated antigen retrieval with citrate buffer pH 6 before commencing with IHC staining protocol.

Target

Function	Transferrins are iron binding transport proteins which can bind two Fe(3+) ions in association with the binding of an anion, usually bicarbonate. It is responsible for the transport of iron from sites of absorption and heme degradation to those of storage and utilization. Serum transferrin may also have a further role in stimulating cell proliferation.
Tissue specificity	Expressed by the liver and secreted in plasma.
Involvement in disease	Defects in TF are the cause of atransferrinemia (ATRAF) [MIM:209300]. Atransferrinemia is rare autosomal recessive disorder characterized by iron overload and hypochromic anemia.
Sequence similarities	Belongs to the transferrin family. Contains 2 transferrin-like domains.
Cellular localization	Secreted.

Images



Western blot - Anti-Transferrin antibody - Serum Loading Control (ab88165)

All lanes : Anti-Transferrin antibody - Serum Loading Control (ab88165) at 1 µg/ml

Lane 1 : Human brain tissue lysate - total protein ([ab29466](#))

Lane 2 : Human liver tissue lysate - total protein ([ab29889](#))

Lane 3 : HepG2 (Human hepatocellular liver carcinoma cell line) Whole Cell Lysate

Lane 4 : Human heart tissue lysate - total protein ([ab29431](#))

Lane 5 : Lung (Human) Tissue Lysate

Lane 6 : Human kidney tissue lysate - total protein ([ab30203](#))

Lysates/proteins at 10 µg per lane.

Secondary

All lanes : Goat polyclonal to Rabbit IgG - H&L - Pre-Adsorbed (HRP) at 1/3000 dilution

Developed using the ECL technique.

Performed under reducing conditions.

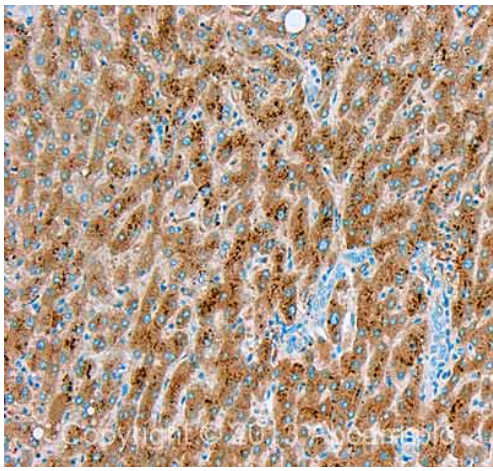
Predicted band size: 77 kDa

Observed band size: 83 kDa

Additional bands at: 68 kDa. We are unsure as to the identity of these extra bands.

Exposure time: 30 seconds

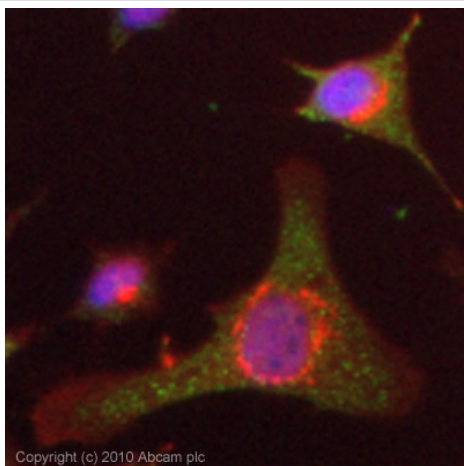
Human Serotransferrin precursor contains a number of potential glycosylation sites (SwissProt) which may explain its migration at a higher molecular weight than predicted.



Immunohistochemistry (Formalin/PFA-fixed paraffin-embedded sections) - Anti-Transferrin antibody - Serum Loading Control (ab88165)

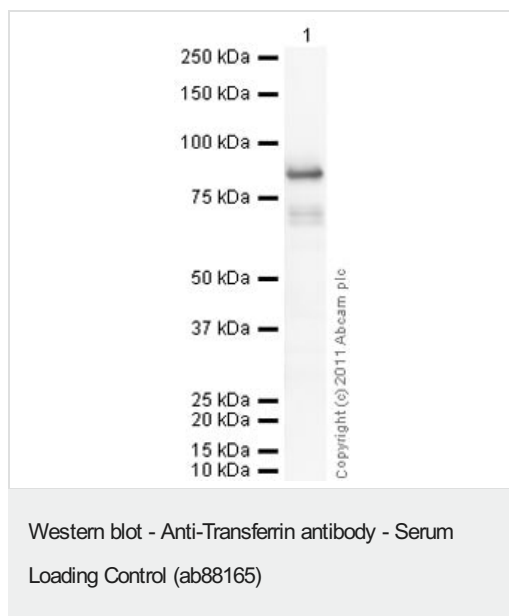
IHC image of Transferrin staining in Human Liver formalin fixed paraffin embedded tissue section, performed on a Leica Bond™ system using the standard protocol F. The section was pre-treated using heat mediated antigen retrieval with sodium citrate buffer (pH6, epitope retrieval solution 1) for 20 mins. The section was then incubated with ab88165, 1 µg/ml, for 15 mins at room temperature and detected using an HRP conjugated compact polymer system. DAB was used as the chromogen. The section was then counterstained with haematoxylin and mounted with DPX.

For other IHC staining systems (automated and non-automated) customers should optimize variable parameters such as antigen retrieval conditions, primary antibody concentration and antibody incubation times.



Immunocytochemistry/ Immunofluorescence - Anti-Transferrin antibody - Serum Loading Control (ab88165)

ICC/IF image of ab88165 stained HeLa cells. The cells were 4% PFA fixed (10 min) and then incubated in 1%BSA / 10% normal goat serum / 0.3M glycine in 0.1% PBS-Tween for 1h to permeabilise the cells and block non-specific protein-protein interactions. The cells were then incubated with the antibody (ab88165, 5µg/ml) overnight at +4°C. The secondary antibody (green) was Alexa Fluor® 488 goat anti-rabbit IgG (H+L) used at a 1/1000 dilution for 1h. Alexa Fluor® 594 WGA was used to label plasma membranes (red) at a 1/200 dilution for 1h. DAPI was used to stain the cell nuclei (blue) at a concentration of 1.43µM. This antibody also gave a positive result in 4% PFA fixed (10 min) Hek293, HepG2 and MCF7 cells at 5µg/ml.



Please note: All products are "FOR RESEARCH USE ONLY. NOT FOR USE IN DIAGNOSTIC PROCEDURES"

Our Abpromise to you: Quality guaranteed and expert technical support

- Replacement or refund for products not performing as stated on the datasheet
- Valid for 12 months from date of delivery
- Response to your inquiry within 24 hours
- We provide support in Chinese, English, French, German, Japanese and Spanish
- Extensive multi-media technical resources to help you
- We investigate all quality concerns to ensure our products perform to the highest standards

If the product does not perform as described on this datasheet, we will offer a refund or replacement. For full details of the Abpromise, please visit <https://www.abcam.com/abpromise> or contact our technical team.

Terms and conditions

- Guarantee only valid for products bought direct from Abcam or one of our authorized distributors