


Product datasheet

Anti-TRAP alpha/TRAPA antibody [EPR5603] ab133238

Recombinant RabMAb

[13 References](#) [3 Images](#)

Overview

Product name	Anti-TRAP alpha/TRAPA antibody [EPR5603]
Description	Rabbit monoclonal [EPR5603] to TRAP alpha/TRAPA
Host species	Rabbit
Tested applications	Suitable for: Flow Cyt (Intra), WB Unsuitable for: ICC/IF, IHC-P or IP
Species reactivity	Reacts with: Human Predicted to work with: Mouse, Rat 
Immunogen	Synthetic peptide corresponding to Human TRAP alpha/TRAPA aa 100-200. Database link: P43307
Positive control	A431, HL60, and T47D lysates; HepG2 cells
General notes	This product is a recombinant monoclonal antibody, which offers several advantages including: <ul style="list-style-type: none">- High batch-to-batch consistency and reproducibility- Improved sensitivity and specificity- Long-term security of supply- Animal-free production For more information see here . Our RabMAb [®] technology is a patented hybridoma-based technology for making rabbit monoclonal antibodies. For details on our patents, please refer to RabMAb[®] patents .

Properties

Form	Liquid
Storage instructions	Shipped at 4°C. Store at -20°C. Stable for 12 months at -20°C.
Storage buffer	pH: 7.2 Preservative: 0.05% Sodium azide Constituents: 0.1% BSA, 40% Glycerol (glycerin, glycerine), 9.85% Tris glycine, 50% Tissue culture supernatant
Purity	Tissue culture supernatant
Clonality	Monoclonal

Clone number EPR5603
Isotype IgG

Applications

The Abpromise guarantee Our **Abpromise guarantee** covers the use of ab133238 in the following tested applications. The application notes include recommended starting dilutions; optimal dilutions/concentrations should be determined by the end user.

Application	Abreviews	Notes
Flow Cyt (Intra)		1/10 - 1/100. ab172730 - Rabbit monoclonal IgG, is suitable for use as an isotype control with this antibody.
WB		1/10000 - 1/50000. Detects a band of approximately 34 kDa (predicted molecular weight: 32 kDa).

Application notes Is unsuitable for ICC/IF, IHC-P or IP.

Target

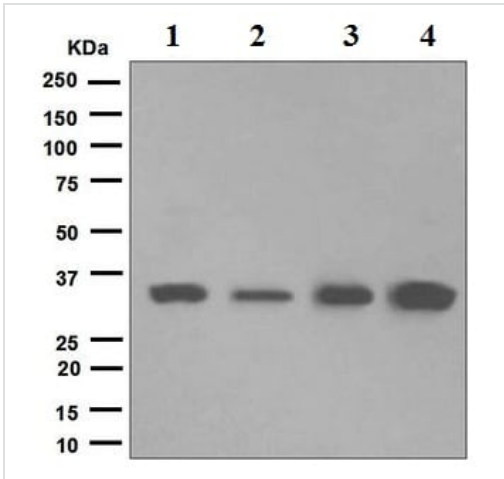
Function TRAP proteins are part of a complex whose function is to bind calcium to the ER membrane and thereby regulate the retention of ER resident proteins. May be involved in the recycling of the translocation apparatus after completion of the translocation process or may function as a membrane-bound chaperone facilitating folding of translocated proteins.

Sequence similarities Belongs to the TRAP-alpha family.

Domain Shows a remarkable charge distribution with the N-terminus being highly negatively charged, and the cytoplasmic C-terminus positively charged.

Cellular localization Endoplasmic reticulum membrane.

Images



Western blot - Anti-TRAP alpha/TRAPA antibody [EPR5603] (ab133238)

All lanes : Anti-TRAP alpha/TRAPA antibody [EPR5603] (ab133238) at 1/10000 dilution

Lane 1 : A431 cell lysate

Lane 2 : HL60 cell lysate

Lane 3 : T47D cell lysate

Lane 4 : HepG2 cell lysate

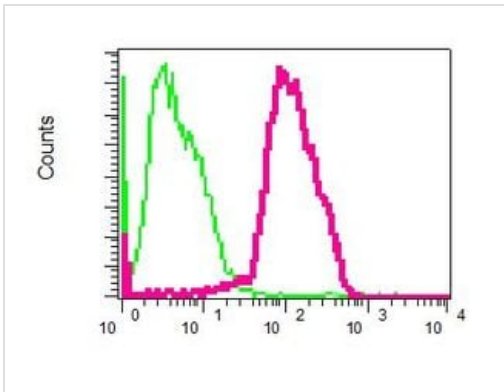
Lysates/proteins at 10 µg per lane.

Secondary

All lanes : HRP labelled goat anti-rabbit at 1/2000 dilution

Predicted band size: 32 kDa


Observed band size: 34 kDa



Flow Cytometry (Intracellular) - Anti-TRAP alpha/TRAPA antibody [EPR5603] (ab133238)

Intracellular flow cytometric analysis of TRAP alpha/TRAPA in permeabilized HepG2 cells, using ab133238 at a 1/10 dilution (red) or a rabbit IgG (negative) (green).

Why choose a recombinant antibody?

 <p>Research with confidence Consistent and reproducible results</p>	 <p>Long-term and scalable supply Recombinant technology</p>
 <p>Success from the first experiment Confirmed specificity</p>	 <p>Ethical standards compliant Animal-free production</p>

Anti-TRAP alpha/TRAPA antibody [EPR5603] (ab133238)

Please note: All products are "FOR RESEARCH USE ONLY. NOT FOR USE IN DIAGNOSTIC PROCEDURES"

Our Abpromise to you: Quality guaranteed and expert technical support

- Replacement or refund for products not performing as stated on the datasheet
- Valid for 12 months from date of delivery
- Response to your inquiry within 24 hours

- We provide support in Chinese, English, French, German, Japanese and Spanish
- Extensive multi-media technical resources to help you
- We investigate all quality concerns to ensure our products perform to the highest standards

If the product does not perform as described on this datasheet, we will offer a refund or replacement. For full details of the Abpromise, please visit <https://www.abcam.com/abpromise> or contact our technical team.

Terms and conditions

- Guarantee only valid for products bought direct from Abcam or one of our authorized distributors