

Product datasheet

Anti-TRAP220/MED1 (phospho T1457) antibody ab60950

★★★★★ [2 Abreviews](#) [9 References](#) [3 Images](#)

Overview

Product name	Anti-TRAP220/MED1 (phospho T1457) antibody
Description	Rabbit polyclonal to TRAP220/MED1 (phospho T1457)
Host species	Rabbit
Tested applications	Suitable for: ELISA, ICC/IF, ChIP, IHC-P, WB
Species reactivity	Reacts with: Mouse, Human, African green monkey
Immunogen	Synthetic peptide corresponding to Human TRAP220/MED1 (phospho T1457). Synthetic phosphopeptide derived from human TRAP220/MED1 around the phosphorylation site of threonine 1457 (A-Y-TP-P-Q).
General notes	<p>The Life Science industry has been in the grips of a reproducibility crisis for a number of years. Abcam is leading the way in addressing this with our range of recombinant monoclonal antibodies and knockout edited cell lines for gold-standard validation. Please check that this product meets your needs before purchasing.</p> <p>If you have any questions, special requirements or concerns, please send us an inquiry and/or contact our Support team ahead of purchase. Recommended alternatives for this product can be found below, along with publications, customer reviews and Q&As</p>

Properties

Form	Liquid
Storage instructions	Shipped at 4°C. Store at +4°C short term (1-2 weeks). Upon delivery aliquot. Store at -20°C. Avoid freeze / thaw cycle.
Storage buffer	<p>pH: 7.40</p> <p>Preservative: 0.02% Sodium azide</p> <p>Constituents: PBS, 50% Glycerol (glycerin, glycerine), 0.87% Sodium chloride</p> <p>Without Mg²⁺ and Ca²⁺</p>
Purity	Immunogen affinity purified
Purification notes	ab60950 was affinity-purified from rabbit antiserum by affinity-chromatography using epitope-specific phosphopeptide. The antibody against non-phosphopeptide was removed by chromatography using non-phosphopeptide corresponding to the phosphorylation site.
Clonality	Polyclonal

Isotype

IgG

Applications

The Abpromise guarantee

Our **Abpromise guarantee** covers the use of ab60950 in the following tested applications.

The application notes include recommended starting dilutions; optimal dilutions/concentrations should be determined by the end user.

Application	Abreviews	Notes
ELISA		Use at an assay dependent concentration.
ICC/IF	★★★★★ (2)	1/500 - 1/1000.
ChIP		Use at an assay dependent concentration. PubMed: 19122196
IHC-P		1/50 - 1/100.
WB		1/500 - 1/1000. Detects a band of approximately 170 kDa (predicted molecular weight: 180 kDa).

Target

Function

Component of the Mediator complex, a coactivator involved in the regulated transcription of nearly all RNA polymerase II-dependent genes. Mediator functions as a bridge to convey information from gene-specific regulatory proteins to the basal RNA polymerase II transcription machinery. Mediator is recruited to promoters by direct interactions with regulatory proteins and serves as a scaffold for the assembly of a functional preinitiation complex with RNA polymerase II and the general transcription factors.

Tissue specificity

Ubiquitously expressed.

Sequence similarities

Belongs to the Mediator complex subunit 1 family.

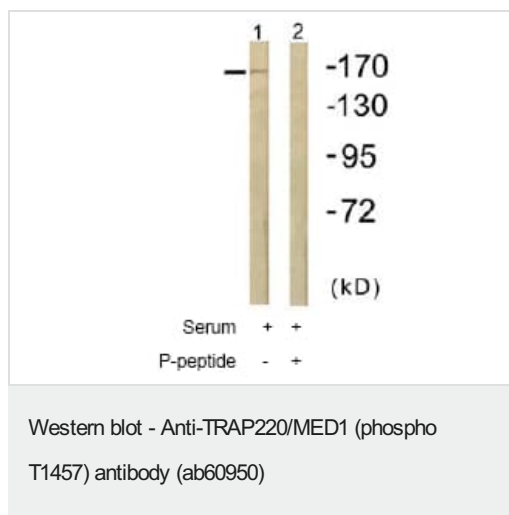
Post-translational modifications

Phosphorylated by MAPK1 or MAPK3 during G2/M phase which may enhance protein stability and promote entry into the nucleolus. Phosphorylated upon DNA damage, probably by ATM or ATR.

Cellular localization

Nucleus. A subset of the protein may enter the nucleolus subsequent to phosphorylation by MAPK1 or MAPK3.

Images



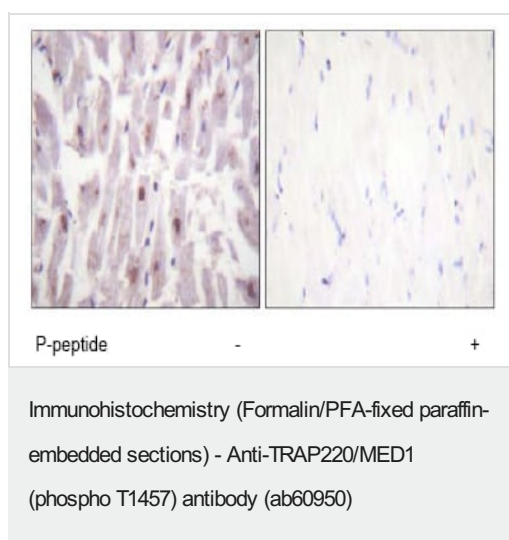
All lanes : Anti-TRAP220/MED1 (phospho T1457) antibody (ab60950) at 1/500 dilution

Lane 1 : HuvEc cell extracts treated with Serum (20%, 30mins)

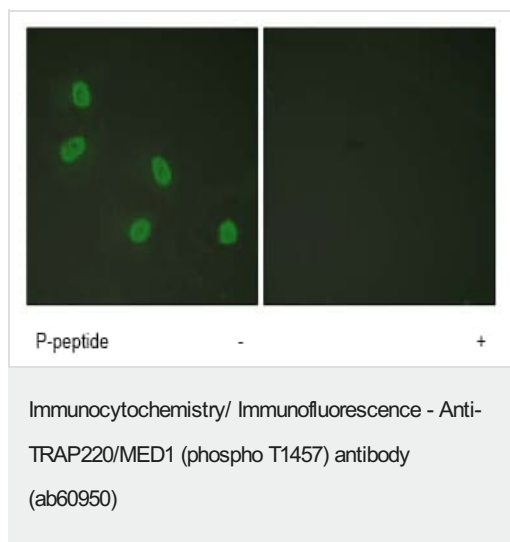
Lane 2 : HuvEc cell extracts treated with Serum (20%, 30mins) with immunising peptide

Predicted band size: 180 kDa

Observed band size: 170 kDa



ab60950 at 1/50 - 1/100 dilution staining TRAP220/MED1 in human heart by Immunohistochemistry, Paraffin embedded tissue, in the absence or presence of the immunising peptide



ab60950 at 1/500 - 1/1000 dilution staining TRAP220/MED1 in HeLa cells by Immunofluorescence.

Please note: All products are "FOR RESEARCH USE ONLY. NOT FOR USE IN DIAGNOSTIC PROCEDURES"

Our Abpromise to you: Quality guaranteed and expert technical support

- Replacement or refund for products not performing as stated on the datasheet
- Valid for 12 months from date of delivery
- Response to your inquiry within 24 hours
- We provide support in Chinese, English, French, German, Japanese and Spanish
- Extensive multi-media technical resources to help you
- We investigate all quality concerns to ensure our products perform to the highest standards

If the product does not perform as described on this datasheet, we will offer a refund or replacement. For full details of the Abpromise, please visit <https://www.abcam.com/abpromise> or contact our technical team.

Terms and conditions

- Guarantee only valid for products bought direct from Abcam or one of our authorized distributors