

Product datasheet

Anti-Treponema pallidum antibody ab20923

[4 References](#) [1 Image](#)

Overview

Product name	Anti-Treponema pallidum antibody
Description	Rabbit polyclonal to Treponema pallidum
Host species	Rabbit
Tested applications	Suitable for: ICC/IF, IHC-P
Species reactivity	Reacts with: Treponema pallidum
Immunogen	Full length native protein (purified) corresponding to Treponema pallidum.
General notes	<p>The Life Science industry has been in the grips of a reproducibility crisis for a number of years. Abcam is leading the way in addressing this with our range of recombinant monoclonal antibodies and knockout edited cell lines for gold-standard validation. Please check that this product meets your needs before purchasing.</p> <p>If you have any questions, special requirements or concerns, please send us an inquiry and/or contact our Support team ahead of purchase. Recommended alternatives for this product can be found below, along with publications, customer reviews and Q&As</p>

Properties

Form	Liquid
Storage instructions	Shipped at 4°C. Upon delivery aliquot and store at -20°C. Avoid freeze / thaw cycles.
Storage buffer	Preservative: 0.1% Sodium azide Constituent: 0.0268% PBS
Purity	Protein A purified
Purification notes	>95% pure. Sodium sulfate precipitation and DEAE chromatography.
Clonality	Polyclonal
Isotype	IgG

Applications

The Abpromise guarantee Our **Abpromise guarantee** covers the use of ab20923 in the following tested applications. The application notes include recommended starting dilutions; optimal dilutions/concentrations should be determined by the end user.

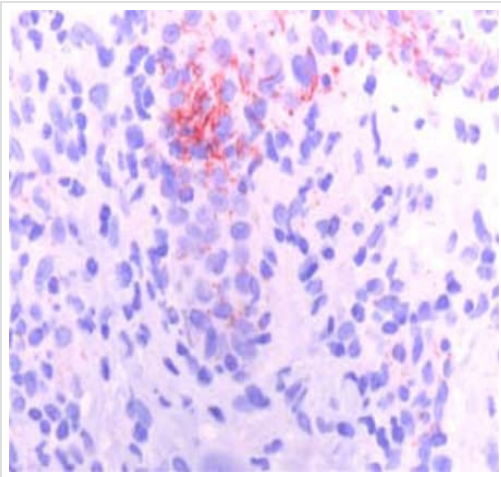
Application	Abreviews	Notes
ICC/IF		1/3000.
IHC-P		1/100. Perform heat mediated antigen retrieval with citrate buffer pH 6 before commencing with IHC staining protocol.

Target

Relevance

Treponema pallidum is the causative agent of syphilis. It is a gram negative spirochete, a helical to sinusoidal bacterium with outer and cytoplasmic membranes, a thin peptidoglycan layer, and periplasmic flagella.

Images



Immunohistochemical analysis of HIV-infected syphilitic skin tissue, staining *Treponema pallidum* with ab20923.

Antigen retrieval was performed before blocking with normal horse serum and 2% BSA. Samples were incubated with primary antibody overnight at 4°C. A biotinylated horse anti-rabbit IgG was used as the secondary antibody. Staining was detected using AEC.

Immunohistochemistry (Formalin/PFA-fixed paraffin-embedded sections) - Anti-*Treponema pallidum* antibody (ab20923)

Image from Stary G et al., The American Journal of Pathology, Volume 177, Issue 5, November 2010, Pages 2421–2432. Fig 7.; doi: 10.2353/ajpath.2010.100277. Epub 2010 Oct 1. with permission from Elsevier.

Please note: All products are "FOR RESEARCH USE ONLY. NOT FOR USE IN DIAGNOSTIC PROCEDURES"

Our Abpromise to you: Quality guaranteed and expert technical support

- Replacement or refund for products not performing as stated on the datasheet
- Valid for 12 months from date of delivery
- Response to your inquiry within 24 hours
- We provide support in Chinese, English, French, German, Japanese and Spanish
- Extensive multi-media technical resources to help you

- We investigate all quality concerns to ensure our products perform to the highest standards

If the product does not perform as described on this datasheet, we will offer a refund or replacement. For full details of the Abpromise, please visit <https://www.abcam.com/abpromise> or contact our technical team.

Terms and conditions

- Guarantee only valid for products bought direct from Abcam or one of our authorized distributors