

Product datasheet

Anti-TRF1 antibody [EPR6313] ab129177

Recombinant RabMAb

[1 Abreviews](#) [4 References](#) [4 Images](#)

Overview

Product name	Anti-TRF1 antibody [EPR6313]
Description	Rabbit monoclonal [EPR6313] to TRF1
Host species	Rabbit
Tested applications	Suitable for: WB Unsuitable for: ICC/IF
Species reactivity	Reacts with: Mouse, Human
Immunogen	Synthetic peptide. This information is proprietary to Abcam and/or its suppliers.
Positive control	WB: K562 cell lysate, 293T cell lysate, Caco 2 cell lysate, HeLa whole cell lysate (ab150035), HEK-293 cell lysate, Mouse 14 day embryo lysates;
General notes	<p>This product is a recombinant monoclonal antibody, which offers several advantages including:</p> <ul style="list-style-type: none"> - High batch-to-batch consistency and reproducibility - Improved sensitivity and specificity - Long-term security of supply - Animal-free production <p>For more information see here.</p> <p>Our RabMAb[®] technology is a patented hybridoma-based technology for making rabbit monoclonal antibodies. For details on our patents, please refer to RabMAb[®] patents.</p> <p>Rat: We have preliminary internal testing data to indicate this antibody may not react with this species. Please contact us for more information.</p>

Properties

Form	Liquid
Storage instructions	Shipped at 4°C. Store at +4°C short term (1-2 weeks). Upon delivery aliquot. Store at -20°C. Stable for 12 months at -20°C.
Storage buffer	pH: 7.20 Preservative: 0.01% Sodium azide Constituents: PBS, 40% Glycerol (glycerin, glycerine), 0.05% BSA
Purity	Protein A purified

Clonality	Monoclonal
Clone number	EPR6313
Isotype	IgG

Applications

The Abpromise guarantee Our **Abpromise guarantee** covers the use of ab129177 in the following tested applications. The application notes include recommended starting dilutions; optimal dilutions/concentrations should be determined by the end user.

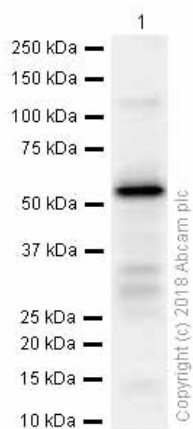
Application	Abreviews	Notes
WB		1/1000 - 1/10000. Detects a band of approximately 60 kDa (predicted molecular weight: 50 kDa).

Application notes Is unsuitable for ICC/IF.

Target

Function	Binds the telomeric double-stranded TTAGGG repeat and negatively regulates telomere length. Involved in the regulation of the mitotic spindle. Component of the shelterin complex (telosome) that is involved in the regulation of telomere length and protection. Shelterin associates with arrays of double-stranded TTAGGG repeats added by telomerase and protects chromosome ends; without its protective activity, telomeres are no longer hidden from the DNA damage surveillance and chromosome ends are inappropriately processed by DNA repair pathways.
Tissue specificity	Highly expressed and ubiquitous. Isoform Pin2 predominates.
Sequence similarities	Contains 1 HTH myb-type DNA-binding domain.
Domain	The acidic N-terminal domain binds to the ankyrin repeats of TNKS1 and TNKS2. The C-terminal domain binds microtubules. The TRFH dimerization region mediates the interaction with TIN2.
Post-translational modifications	Phosphorylated preferentially on Ser-219 in an ATM-dependent manner in response to ionizing DNA damage. ADP-ribosylation by TNKS1 or TNKS2 diminishes its ability to bind to telomeric DNA. Ubiquitinated by RLIM/RNF12, leading to its degradation by the proteasome. Ubiquitinated by a SCF (SKP1-CUL1-F-box protein) ubiquitin-protein ligase complex, leading to its degradation by the proteasome.
Cellular localization	Nucleus. Cytoplasm > cytoskeleton > spindle. Chromosome > telomere. Colocalizes with telomeric DNA in interphase and metaphase cells and is located at chromosome ends during metaphase. Associates with the mitotic spindle.

Images



Western blot - Anti-TRF1 antibody [EPR6313]
(ab129177)

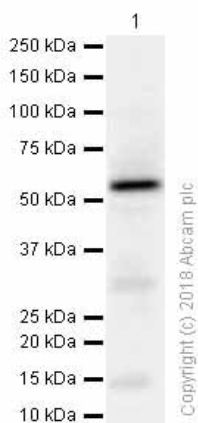
Anti-TRF1 antibody [EPR6313] (ab129177) at 1/1000 dilution
(Purified) + Mouse 14 day embryo lysates at 15 µg

Secondary

Goat Anti-Rabbit IgG H&L (HRP) ([ab97051](#)) at 1/10000 dilution

Predicted band size: 50 kDa

Observed band size: 60 kDa



Western blot - Anti-TRF1 antibody [EPR6313]
(ab129177)

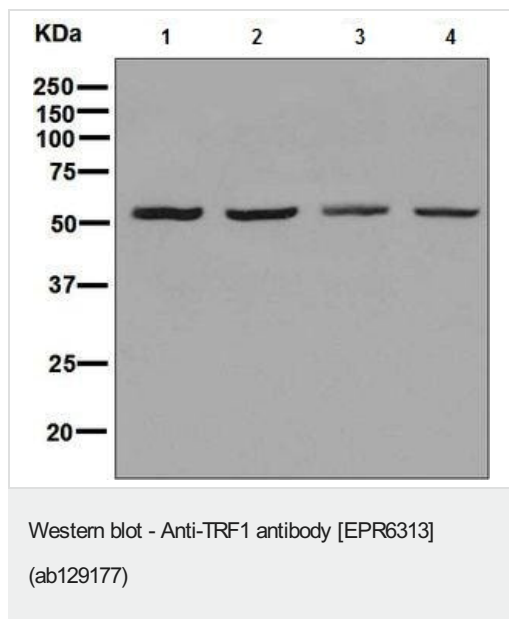
Anti-TRF1 antibody [EPR6313] (ab129177) at 1/1000 dilution
(Purified) + HEK-293 (Human embryonic kidney epithelial cell)
whole cell lysates at 15 µg

Secondary

Goat Anti-Rabbit IgG H&L (HRP) ([ab97051](#)) at 1/20000 dilution

Predicted band size: 50 kDa

Observed band size: 60 kDa



All lanes : Anti-TRF1 antibody [EPR6313] (ab129177) at 1/1000 dilution (Unpurified)

Lane 1 : K562 (human chronic myelogenous leukemia cell line from bone marrow) cell lysate

Lane 2 : HEK-293T (human epithelial cell line from embryonic kidney transformed with large T antigen) cell lysate

Lane 3 : Caco-2 (Human colorectal adenocarcinoma cell line) cell lysate

Lane 4 : HeLa (human epithelial cell line from cervix adenocarcinoma) cell lysate

Lysates/proteins at 10 µg per lane.

Secondary

All lanes : Goat anti-rabbit HRP conjugated antibody at 1/2000 dilution

Predicted band size: 50 kDa

Observed band size: 60 kDa

Why choose a recombinant antibody?



Research with confidence
Consistent and reproducible results



Long-term and scalable supply
Recombinant technology



Success from the first experiment
Confirmed specificity



Ethical standards compliant
Animal-free production

Anti-TRF1 antibody [EPR6313] (ab129177)

Please note: All products are "FOR RESEARCH USE ONLY. NOT FOR USE IN DIAGNOSTIC PROCEDURES"

Our Abpromise to you: Quality guaranteed and expert technical support

- Replacement or refund for products not performing as stated on the datasheet
- Valid for 12 months from date of delivery
- Response to your inquiry within 24 hours
- We provide support in Chinese, English, French, German, Japanese and Spanish
- Extensive multi-media technical resources to help you
- We investigate all quality concerns to ensure our products perform to the highest standards

If the product does not perform as described on this datasheet, we will offer a refund or replacement. For full details of the Abpromise, please visit <https://www.abcam.com/abpromise> or contact our technical team.

Terms and conditions

- Guarantee only valid for products bought direct from Abcam or one of our authorized distributors