

Product datasheet

Anti-Trichohyalin antibody [AE15] ab58755

★★★★★ [2 Abreviews](#) [15 References](#) [1 Image](#)

Overview

Product name	Anti-Trichohyalin antibody [AE15]
Description	Mouse monoclonal [AE15] to Trichohyalin
Host species	Mouse
Specificity	This antibody recognises a 220K trichohyalin granular protein, a marker for hair follicular differentiation.
Tested applications	Suitable for: WB, IHC-P, IHC-Fr
Species reactivity	Reacts with: Mouse, Human
Immunogen	Tissue, cells or virus corresponding to Human Trichohyalin.
General notes	<p>The Life Science industry has been in the grips of a reproducibility crisis for a number of years. Abcam is leading the way in addressing this with our range of recombinant monoclonal antibodies and knockout edited cell lines for gold-standard validation. Please check that this product meets your needs before purchasing.</p> <p>If you have any questions, special requirements or concerns, please send us an inquiry and/or contact our Support team ahead of purchase. Recommended alternatives for this product can be found below, along with publications, customer reviews and Q&As</p>

Properties

Form	Liquid
Storage instructions	Shipped at 4°C. Upon delivery aliquot and store at -20°C. Avoid freeze / thaw cycles.
Storage buffer	Preservative: 0.1% Sodium azide Constituent: PBS
Purity	Protein G purified
Clonality	Monoclonal
Clone number	AE15
Isotype	IgG

Applications

The Abpromise guarantee Our **Abpromise guarantee** covers the use of ab58755 in the following tested applications.

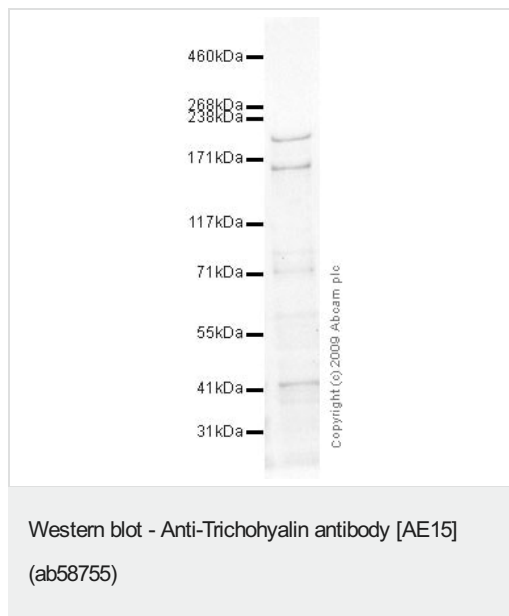
The application notes include recommended starting dilutions; optimal dilutions/concentrations should be determined by the end user.

Application	Abreviews	Notes
WB		1/1000. Predicted molecular weight: 220 kDa.
IHC-P	★★★★★ (1)	Use at an assay dependent concentration. PubMed: 19038788
IHC-Fr	★★★★★ (1)	Use at an assay dependent concentration. PubMed: 19786578

Target

Function	Intermediate filament-associated protein that associates in regular arrays with keratin intermediate filaments (KIF) of the inner root sheath cells of the hair follicle and the granular layer of the epidermis. It later becomes cross-linked to KIF by isodipeptide bonds. It may serve as scaffold protein, together with involucrin, in the organization of the cell envelope or even anchor the cell envelope to the KIF network. It may be involved in its own calcium-dependent postsynthetic processing during terminal differentiation.
Tissue specificity	Found in the hard keratinizing tissues such as the inner root sheath (IRS) of hair follicles and medulla, and in the filiform papillae of dorsal tongue epithelium.
Sequence similarities	Belongs to the S100-fused protein family. Contains 2 EF-hand domains.
Developmental stage	Expressed during late differentiation of the epidermis.
Domain	Consists of nine domains. Domain 1 contains two EF-hand calcium-binding domains. Domains 2-4, 6, and 8 are almost entirely alpha-helical, configured as a series of peptide repeats of varying regularity, and are thought to form a single-stranded alpha-helical rod stabilized by ionic interactions. Domain 6 is the most regular and may bind KIF directly by ionic interactions. Domains 5 and 7 are less well organized and may induce folds in the molecule. Domain 9 contains the C-terminus, conserved among different species.
Post-translational modifications	Substrate of transglutaminase. Some 200 arginines are probably converted to citrullines by peptidylarginine deimidase.

Images



Anti-Trichohyalin antibody [AE15] (ab58755) at 1 µg/ml + Lung (Human) Tissue Lysate at 10 µg

Secondary

Goat polyclonal to Mouse IgG - H&L - Pre-Adsorbed (HRP) at 1/3000 dilution

Predicted band size: 220 kDa

Observed band size: 220 kDa

Additional bands at: 165 kDa. We are unsure as to the identity of these extra bands.

Please note: All products are "FOR RESEARCH USE ONLY. NOT FOR USE IN DIAGNOSTIC PROCEDURES"

Our Abpromise to you: Quality guaranteed and expert technical support

- Replacement or refund for products not performing as stated on the datasheet
- Valid for 12 months from date of delivery
- Response to your inquiry within 24 hours
- We provide support in Chinese, English, French, German, Japanese and Spanish
- Extensive multi-media technical resources to help you
- We investigate all quality concerns to ensure our products perform to the highest standards

If the product does not perform as described on this datasheet, we will offer a refund or replacement. For full details of the Abpromise, please visit <https://www.abcam.com/abpromise> or contact our technical team.

Terms and conditions

- Guarantee only valid for products bought direct from Abcam or one of our authorized distributors