


Product datasheet

Anti-TRIM2 antibody ab3942

[2 References](#) [1 Image](#)

Overview

Product name	Anti-TRIM2 antibody
Description	Goat polyclonal to TRIM2
Host species	Goat
Tested applications	Suitable for: IHC-P, WB
Species reactivity	Reacts with: Rat, Human Predicted to work with: Cow, Dog 
Immunogen	Synthetic peptide corresponding to Human TRIM2 aa 731-744 (C terminal). Sequence: DSGNHCFKVYRYLQ

 [Run BLAST with](#)

 [Run BLAST with](#)

General notes

The Life Science industry has been in the grips of a reproducibility crisis for a number of years. Abcam is leading the way in addressing this with our range of recombinant monoclonal antibodies and knockout edited cell lines for gold-standard validation. Please check that this product meets your needs before purchasing.

If you have any questions, special requirements or concerns, please send us an inquiry and/or contact our Support team ahead of purchase. Recommended alternatives for this product can be found below, along with publications, customer reviews and Q&As

Properties

Form	Liquid
Storage instructions	Shipped at 4°C. Upon delivery aliquot and store at -20°C or -80°C. Avoid repeated freeze / thaw cycles.
Storage buffer	pH: 7.30 Preservative: 0.02% Sodium azide Constituents: 0.5% Tris, 0.5% BSA
Purity	Immunogen affinity purified
Purification notes	Purified from goat serum by ammonium sulphate precipitation followed by antigen affinity chromatography using the immunizing peptide.
Clonality	Polyclonal

Isotype

IgG

Applications

The Abpromise guarantee

Our **Abpromise guarantee** covers the use of ab3942 in the following tested applications.

The application notes include recommended starting dilutions; optimal dilutions/concentrations should be determined by the end user.

Application	Abreviews	Notes
IHC-P		Use a concentration of 6 - 12 µg/ml. Perform heat mediated antigen retrieval with citrate buffer pH 6 before commencing with IHC staining protocol.
WB		Use a concentration of 0.5 µg/ml. A 1 hour primary incubation is recommended for this product.

Target

Function

May contribute to the alteration of neural cellular mechanisms.

Sequence similarities

Belongs to the TRIM/RBCC family.

Contains 1 B box-type zinc finger.

Contains 1 filamin repeat.

Contains 6 NHL repeats.

Contains 1 RING-type zinc finger.

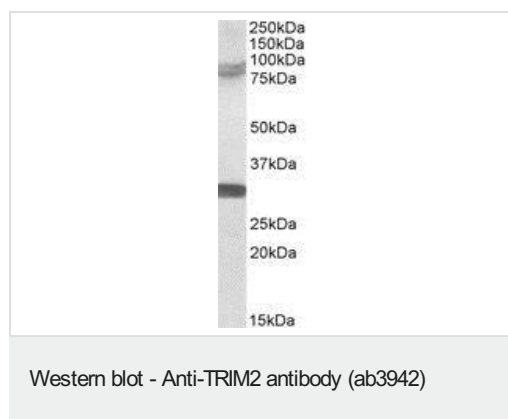
Domain

The interaction with myosin V is dependent upon its NHL repeats, which form a beta-propeller (NHL) domain containing six blades.

Cellular localization

Cytoplasm.

Images



Anti-TRIM2 antibody (ab3942) at 0.5 µg/ml + Rat brain tissue lysate at 35 µg

Observed band size: 80,85 kDa

Additional bands at: 30 kDa. We are unsure as to the identity of these extra bands.

Primary incubation was for 1 hour. Detected by chemiluminescence.

Please note: All products are "FOR RESEARCH USE ONLY. NOT FOR USE IN DIAGNOSTIC PROCEDURES"

Our Abpromise to you: Quality guaranteed and expert technical support

- Replacement or refund for products not performing as stated on the datasheet
- Valid for 12 months from date of delivery
- Response to your inquiry within 24 hours

- We provide support in Chinese, English, French, German, Japanese and Spanish
- Extensive multi-media technical resources to help you
- We investigate all quality concerns to ensure our products perform to the highest standards

If the product does not perform as described on this datasheet, we will offer a refund or replacement. For full details of the Abpromise, please visit <https://www.abcam.com/abpromise> or contact our technical team.

Terms and conditions

- Guarantee only valid for products bought direct from Abcam or one of our authorized distributors