


Product datasheet

Anti-Tripeptidyl peptidase II/TPPII antibody [EPR13202] ab180177

Recombinant RabMAb

[1 References](#) [5 Images](#)

Overview

Product name	Anti-Tripeptidyl peptidase II/TPPII antibody [EPR13202]
Description	Rabbit monoclonal [EPR13202] to Tripeptidyl peptidase II/TPPII
Host species	Rabbit
Tested applications	Suitable for: IHC-P, WB, ICC/IF, Flow Cyt (Intra) Unsuitable for: IP
Species reactivity	Reacts with: Human Predicted to work with: Mouse, Rat 
Immunogen	Recombinant fragment within Human Tripeptidyl peptidase II/TPPII. The exact sequence is proprietary. Database link: P29144
Positive control	Jurkat, HeLa, HepG2, and fetal liver lysates; Human tonsil tissue; HeLa cells; Jurkat cells.
General notes	This product is a recombinant monoclonal antibody, which offers several advantages including: <ul style="list-style-type: none"> - High batch-to-batch consistency and reproducibility - Improved sensitivity and specificity - Long-term security of supply - Animal-free production For more information see here . Our RabMAb [®] technology is a patented hybridoma-based technology for making rabbit monoclonal antibodies. For details on our patents, please refer to RabMAb[®] patents .

Properties

Form	Liquid
Storage instructions	Shipped at 4°C. Store at +4°C short term (1-2 weeks). Upon delivery aliquot. Store at -20°C long term. Avoid freeze / thaw cycle.
Storage buffer	pH: 7.20 Preservative: 0.01% Sodium azide Constituents: 9% PBS, 40% Glycerol (glycerin, glycerine), 0.05% BSA, 50% Tissue culture supernatant

Purity	Tissue culture supernatant
Clonality	Monoclonal
Clone number	EPR13202
Isotype	IgG

Applications

The Abpromise guarantee Our **Abpromise guarantee** covers the use of ab180177 in the following tested applications. The application notes include recommended starting dilutions; optimal dilutions/concentrations should be determined by the end user.

Application	Abreviews	Notes
IHC-P		1/50 - 1/100. Perform heat mediated antigen retrieval before commencing with IHC staining protocol.
WB		1/1000 - 1/10000. Detects a band of approximately 138 kDa (predicted molecular weight: 138 kDa).
ICC/IF		1/100 - 1/250.
Flow Cyt (Intra)		1/10 - 1/100. ab172730 - Rabbit monoclonal IgG, is suitable for use as an isotype control with this antibody.

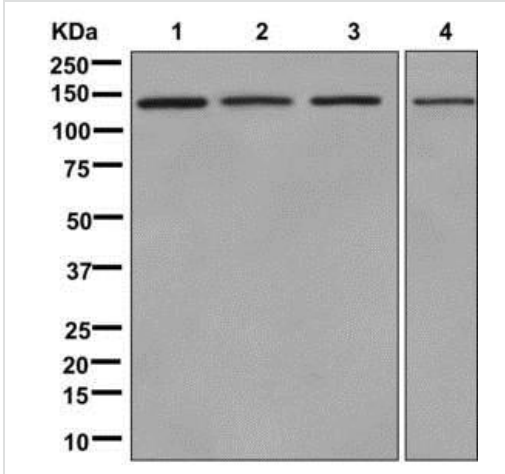
Application notes Is unsuitable for IP.

Target

Relevance Tripeptidyl peptidase II is a component of the proteolytic cascade acting downstream of the 26S proteasome in the ubiquitin-proteasome pathway. It may be able to complement the 26S proteasome function to some extent under conditions in which the latter is inhibited. Tripeptidyl peptidase II is a mammalian peptidase that, at neutral pH, removes tripeptides from the N terminus of longer peptides. The protein has a specialized function that is essential for some MHC class I antigen presentation. The protein is a high molecular mass serine exopeptidase; the amino acid sequence surrounding the serine residue at the active site is similar to the peptidases of the subtilisin class rather than the trypsin class.

Cellular localization Cytoplasmic

Images



Western blot - Anti-Tripeptidyl peptidase II/TPPII antibody [EPR13202] (ab180177)

All lanes : Anti-Tripeptidyl peptidase II/TPPII antibody [EPR13202] (ab180177) at 1/1000 dilution

Lane 1 : Jurkat cell lysate

Lane 2 : HeLa cell lysate

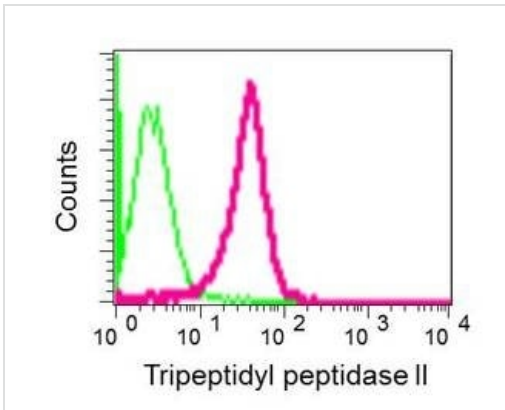
Lane 3 : HepG2 cell lysate

Lane 4 : Fetal liver tissue lysate

Lysates/proteins at 10 µg per lane.

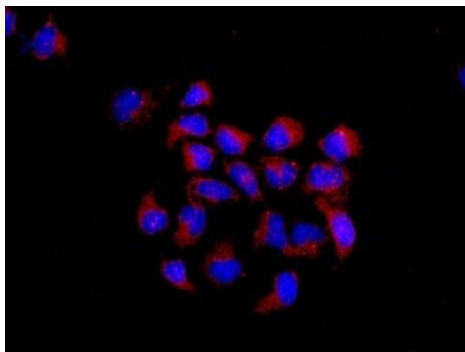
Predicted band size: 138 kDa

Additional bands at: 138 kDa. We are unsure as to the identity of these extra bands.



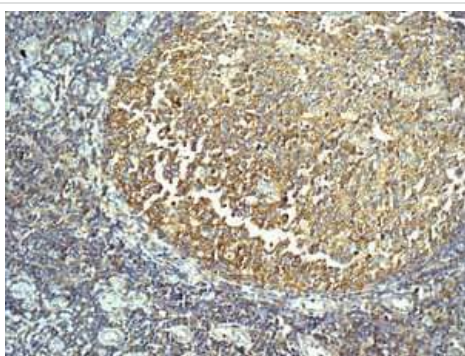
Flow Cytometry (Intracellular) - Anti-Tripeptidyl peptidase II/TPPII antibody [EPR13202] (ab180177)

Intracellular flow cytometrical analysis of permeabilized Jurkat cells labeling Tripeptidyl peptidase II/TPPII with ab180177 at 1/10 (red) or a rabbit IgG (negative) (green).



Immunofluorescent analysis of HeLa cells labeling Tripeptidyl peptidase II/TPPII with ab180177 at 1/100 (red) and DAPI staining (blue).

Immunocytochemistry/ Immunofluorescence - Anti-Tripeptidyl peptidase II/TPPII antibody [EPR13202] (ab180177)



Immunohistochemical analysis of paraffin embedded Human tonsil tissue labeling Tripeptidyl peptidase II/TPPII with ab180177 at 1/50. Perform heat mediated antigen retrieval before commencing with IHC staining protocol.

Immunohistochemistry (Formalin/PFA-fixed paraffin-embedded sections) - Anti-Tripeptidyl peptidase II/TPPII antibody [EPR13202] (ab180177)

Why choose a recombinant antibody?



Research with confidence
Consistent and reproducible results



Long-term and scalable supply
Recombinant technology



Success from the first experiment
Confirmed specificity



Ethical standards compliant
Animal-free production

Anti-Tripeptidyl peptidase II/TPPII antibody [EPR13202] (ab180177)

Please note: All products are "FOR RESEARCH USE ONLY. NOT FOR USE IN DIAGNOSTIC PROCEDURES"

Our Abpromise to you: Quality guaranteed and expert technical support

- Replacement or refund for products not performing as stated on the datasheet
- Valid for 12 months from date of delivery
- Response to your inquiry within 24 hours

- We provide support in Chinese, English, French, German, Japanese and Spanish
- Extensive multi-media technical resources to help you
- We investigate all quality concerns to ensure our products perform to the highest standards

If the product does not perform as described on this datasheet, we will offer a refund or replacement. For full details of the Abpromise, please visit <https://www.abcam.com/abpromise> or contact our technical team.

Terms and conditions

- Guarantee only valid for products bought direct from Abcam or one of our authorized distributors