


Anti-TROP2 antibody ab58930

[1 References](#) [1 Image](#)

Overview

Product name	Anti-TROP2 antibody
Description	Rabbit polyclonal to TROP2
Host species	Rabbit
Tested applications	Suitable for: WB
Species reactivity	Reacts with: Human Predicted to work with: Pig 
Immunogen	Synthetic peptide within Human TROP2 aa 150-250 conjugated to keyhole limpet haemocyanin. The exact sequence is proprietary. (Peptide available as ab94390)
Positive control	WB: Recombinant Human TROP2 protein (ab114374), A549, PC3 and HeLa whole cell lysates.
General notes	<p>The Life Science industry has been in the grips of a reproducibility crisis for a number of years. Abcam is leading the way in addressing this with our range of recombinant monoclonal antibodies and knockout edited cell lines for gold-standard validation. Please check that this product meets your needs before purchasing.</p> <p>If you have any questions, special requirements or concerns, please send us an inquiry and/or contact our Support team ahead of purchase. Recommended alternatives for this product can be found below, along with publications, customer reviews and Q&As</p>

Properties

Form	Liquid
Storage instructions	Shipped at 4°C. Store at +4°C short term (1-2 weeks). Upon delivery aliquot. Store at -20°C or -80°C. Avoid freeze / thaw cycle.
Storage buffer	pH: 7.40 Preservative: 0.02% Sodium azide Constituent: PBS Batches of this product that have a concentration < 1mg/ml may have BSA added as a stabilising agent. If you would like information about the formulation of a specific lot, please contact our scientific support team who will be happy to help.
Purity	Immunogen affinity purified

Clonality	Polyclonal
Isotype	IgG

Applications

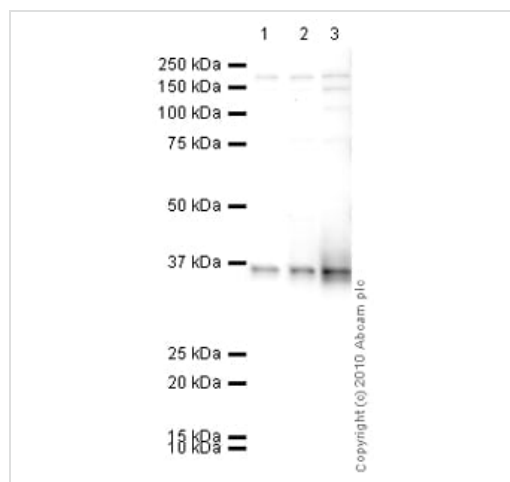
The Abpromise guarantee Our **Abpromise guarantee** covers the use of ab58930 in the following tested applications. The application notes include recommended starting dilutions; optimal dilutions/concentrations should be determined by the end user.

Application	Abreviews	Notes
WB		Use a concentration of 1 µg/ml. Detects a band of approximately 36 kDa (predicted molecular weight: 36 kDa).

Target

Function	May function as a growth factor receptor.
Tissue specificity	Placenta, pancreatic carcinoma cell lines.
Involvement in disease	Defects in TACSTD2 are the cause of gelatinous drop-like corneal dystrophy (GDLD) [MIM:204870]; also known as lattice corneal dystrophy type III. GDLD is an autosomal recessive disorder characterized by grayish corneal amyloid deposits that cause severe visual impairment.
Sequence similarities	Belongs to the EPCAM family. Contains 1 thyroglobulin type-1 domain.
Post-translational modifications	The N-terminus is blocked.
Cellular localization	Membrane.

Images



Western blot - Anti-TROP2 antibody (ab58930)

All lanes : Anti-TROP2 antibody (ab58930) at 1 µg/ml

Lane 1 : A549 (Human lung adenocarcinoma epithelial cell line)

Whole Cell Lysate

Lane 2 : PC3 (Human prostate carcinoma cell line) Whole Cell

Lysate Whole Cell Lysate

Lane 3 : HeLa (Human epithelial carcinoma cell line) Whole Cell

Lysate

Lysates/proteins at 10 µg per lane.

Secondary

All lanes : Goat polyclonal to Rabbit IgG - H&L - Pre-Adsorbed (HRP) at 1/3000 dilution

Developed using the ECL technique.

Performed under reducing conditions.

Predicted band size: 36 kDa

Observed band size: 36 kDa

Exposure time: 5 minutes

Human Tumor-associated calcium signal transducer 2 precursor contains a number of potential glycosylation sites (SwissProt) which may explain the higher migration pattern observed.

Please note: All products are "FOR RESEARCH USE ONLY. NOT FOR USE IN DIAGNOSTIC PROCEDURES"

Our Abpromise to you: Quality guaranteed and expert technical support

- Replacement or refund for products not performing as stated on the datasheet
- Valid for 12 months from date of delivery
- Response to your inquiry within 24 hours
- We provide support in Chinese, English, French, German, Japanese and Spanish
- Extensive multi-media technical resources to help you
- We investigate all quality concerns to ensure our products perform to the highest standards

If the product does not perform as described on this datasheet, we will offer a refund or replacement. For full details of the Abpromise, please visit <https://www.abcam.com/abpromise> or contact our technical team.

Terms and conditions

- Guarantee only valid for products bought direct from Abcam or one of our authorized distributors