

## Product datasheet

# Anti-TRPC6 antibody ab62461

★★★★★ [1 Abreviews](#) [20 References](#) [3 Images](#)

### Overview

---

<b>Product name</b>	Anti-TRPC6 antibody
<b>Description</b>	Rabbit polyclonal to TRPC6
<b>Host species</b>	Rabbit
<b>Specificity</b>	This antibody does potentially cross-react with TRPC3.
<b>Tested applications</b>	<b>Suitable for:</b> WB, ICC
<b>Species reactivity</b>	<b>Reacts with:</b> Human
<b>Immunogen</b>	Synthetic peptide corresponding to Human TRPC6 (N terminal). Database link: <a href="#">Q9Y210</a>
<b>Positive control</b>	WB: Human K562 cell lysate. IHC-P: Mouse lung tissue. ICC: K562 cells.
<b>General notes</b>	<p>The Life Science industry has been in the grips of a reproducibility crisis for a number of years. Abcam is leading the way in addressing this with our range of recombinant monoclonal antibodies and knockout edited cell lines for gold-standard validation. Please check that this product meets your needs before purchasing.</p> <p>If you have any questions, special requirements or concerns, please send us an inquiry and/or contact our Support team ahead of purchase. Recommended alternatives for this product can be found below, along with publications, customer reviews and Q&amp;As</p>

### Properties

---

<b>Form</b>	Liquid
<b>Storage instructions</b>	Shipped at 4°C. Store at +4°C short term (1-2 weeks). Upon delivery aliquot. Store at -20°C. Avoid freeze / thaw cycle.
<b>Storage buffer</b>	pH: 7.2 Preservative: 0.02% Sodium azide Constituent: PBS
<b>Purity</b>	Immunogen affinity purified
<b>Clonality</b>	Polyclonal
<b>Isotype</b>	IgG

### Applications

## The Abpromise guarantee

Our **Abpromise guarantee** covers the use of ab62461 in the following tested applications.

The application notes include recommended starting dilutions; optimal dilutions/concentrations should be determined by the end user.

Application	Abreviews	Notes
WB		Use a concentration of 0.5 - 1 µg/ml. Detects a band of approximately 106 kDa (predicted molecular weight: 106 kDa).
ICC		Use a concentration of 2 - 5 µg/ml.

## Target

### Function

Thought to form a receptor-activated non-selective calcium permeant cation channel. Probably is operated by a phosphatidylinositol second messenger system activated by receptor tyrosine kinases or G-protein coupled receptors. Activated by diacylglycerol (DAG) in a membrane-delimited fashion, independently of protein kinase C. Seems not to be activated by intracellular calcium store depletion.

### Tissue specificity

Expressed primarily in placenta, lung, spleen, ovary and small intestine. Expressed in podocytes and is a component of the glomerular slit diaphragm.

### Involvement in disease

Defects in TRPC6 are the cause of focal segmental glomerulosclerosis type 2 (FSGS2) [MIM:603965]. A renal pathology defined by the presence of segmental sclerosis in glomeruli and resulting in proteinuria, reduced glomerular filtration rate and edema. Renal insufficiency often progresses to end-stage renal disease, a highly morbid state requiring either dialysis therapy or kidney transplantation.

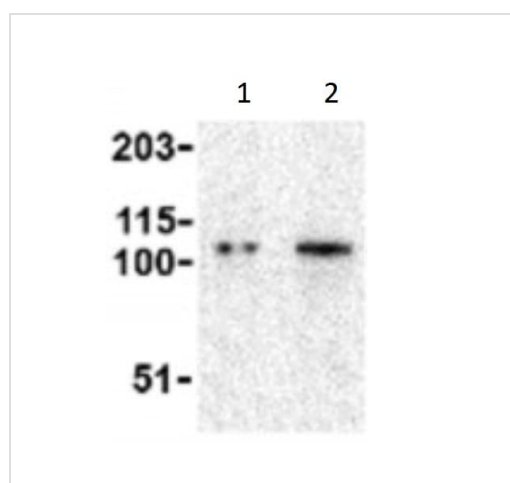
### Sequence similarities

Belongs to the transient receptor (TC 1.A.4) family. STrpC subfamily. TRPC6 sub-subfamily. Contains 4 ANK repeats.

### Cellular localization

Membrane.

## Images



Western blot - Anti-TRPC6 antibody (ab62461)

**Lane 1** : Anti-TRPC6 antibody (ab62461) at 0.5 µg/ml

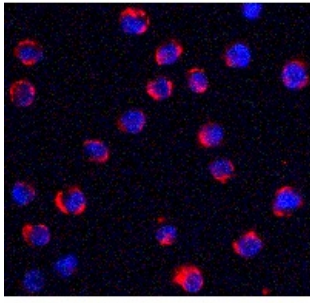
**Lane 2** : Anti-TRPC6 antibody (ab62461) at 1 µg/ml

**All lanes** : K562 cell lysate

Lysates/proteins at 15 µg per lane.

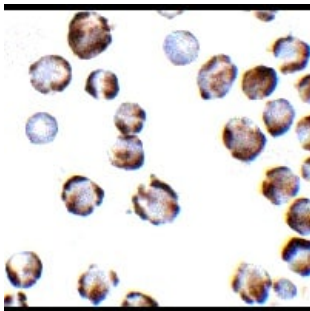
**Predicted band size:** 106 kDa

**Observed band size:** 106 kDa



Immunocytochemistry - Anti-TRPC6 antibody  
(ab62461)

ICC analysis of K562 (human chronic myelogenous leukemia cell line from bone marrow) cells stained for TRPC6 (red) using ab62461 (5 µg/ml).



Immunocytochemistry - Anti-TRPC6 antibody  
(ab62461)

ICC analysis of K562 (human chronic myelogenous leukemia cell line from bone marrow) cells stained for TRPC6 using ab62461 (2 µg/ml).

**Please note:** All products are "FOR RESEARCH USE ONLY. NOT FOR USE IN DIAGNOSTIC PROCEDURES"

### Our Abpromise to you: Quality guaranteed and expert technical support

---

- Replacement or refund for products not performing as stated on the datasheet
- Valid for 12 months from date of delivery
- Response to your inquiry within 24 hours
- We provide support in Chinese, English, French, German, Japanese and Spanish
- Extensive multi-media technical resources to help you
- We investigate all quality concerns to ensure our products perform to the highest standards

If the product does not perform as described on this datasheet, we will offer a refund or replacement. For full details of the Abpromise, please visit <https://www.abcam.com/abpromise> or contact our technical team.

### Terms and conditions

---

- Guarantee only valid for products bought direct from Abcam or one of our authorized distributors