




## Product datasheet

### Anti-TRPV3 antibody [N15/4] ab85022

★★★★★ [2 Abreviews](#) [7 References](#) [4 Images](#)

#### Overview

<b>Product name</b>	Anti-TRPV3 antibody [N15/4]
<b>Description</b>	Mouse monoclonal [N15/4] to TRPV3
<b>Host species</b>	Mouse
<b>Tested applications</b>	<b>Suitable for:</b> WB, Flow Cyt, IHC-P
<b>Species reactivity</b>	<b>Reacts with:</b> Mouse, Human <b>Predicted to work with:</b> Cow 
<b>Immunogen</b>	Synthetic peptide corresponding to Rat TRPV3 aa 774-791. From the cytoplasmic C-terminus Sequence: KTTLYAFDELDEFPETSV  Database link: <a href="#">NP_001020928</a> <a href="#"> Run BLAST with</a> <a href="#"> Run BLAST with</a>
<b>Positive control</b>	COS-1 cell lysate transiently transfected with TRPV3.
<b>General notes</b>	<p>The clone number has been updated from S15-4 to N15/4, both clone numbers name the same antibody clone.</p> <p>The Life Science industry has been in the grips of a reproducibility crisis for a number of years. Abcam is leading the way in addressing this with our range of recombinant monoclonal antibodies and knockout edited cell lines for gold-standard validation. Please check that this product meets your needs before purchasing.</p> <p>If you have any questions, special requirements or concerns, please send us an inquiry and/or contact our Support team ahead of purchase. Recommended alternatives for this product can be found below, along with publications, customer reviews and Q&amp;As</p>

#### Properties

<b>Form</b>	Liquid
<b>Storage instructions</b>	Shipped at 4°C. Store at -20°C. Stable for 12 months at -20°C.
<b>Storage buffer</b>	Preservative: 0.09% Sodium azide Constituents: 50% Glycerol (glycerin, glycerine), PBS
<b>Purity</b>	Protein G purified

<b>Clonality</b>	Monoclonal
<b>Clone number</b>	N15/4
<b>Isotype</b>	IgG2a

## Applications

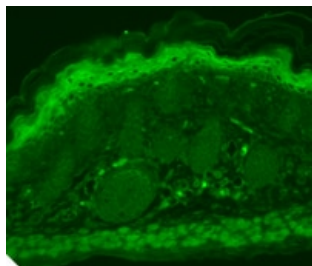
**The Abpromise guarantee** Our **Abpromise guarantee** covers the use of ab85022 in the following tested applications. The application notes include recommended starting dilutions; optimal dilutions/concentrations should be determined by the end user.

Application	Abreviews	Notes
<b>WB</b>		Use a concentration of 1 µg/ml. Predicted molecular weight: 90 kDa.
<b>Flow Cyt</b>		Use 1µg for 10 <sup>6</sup> cells. <b>ab170191</b> - Mouse monoclonal IgG2a, is suitable for use as an isotype control with this antibody.
<b>IHC-P</b>	★★★★★ (2)	1/1000.

## Target

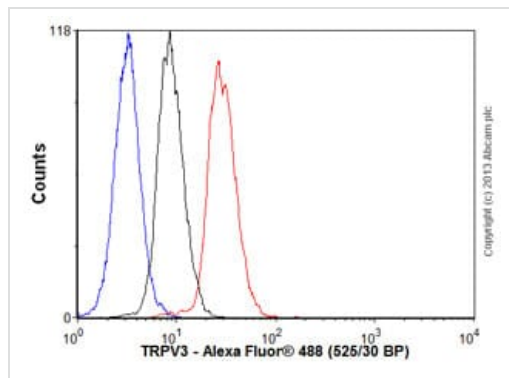
<b>Function</b>	Putative receptor-activated non-selective calcium permeant cation channel. It is activated by innocuous (warm) temperatures and shows an increased response at noxious temperatures greater than 39 degrees Celsius. Activation exhibits an outward rectification. May associate with TRPV1 and may modulate its activity.
<b>Tissue specificity</b>	Abundantly expressed in CNS. Widely expressed at low levels. Detected in dorsal root ganglion (at protein level).
<b>Sequence similarities</b>	Belongs to the transient receptor (TC 1.A.4) family. TrpV subfamily. TRPV3 sub-subfamily. Contains 3 ANK repeats.
<b>Cellular localization</b>	Membrane.

## Images



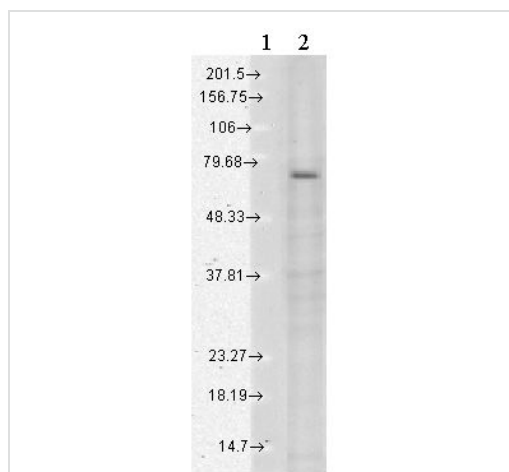
Immunohistochemical analysis of Bouin's Fixative and paraffin-embedded Mouse backskin tissue labelling TrpV3 with ab85022 at 1/100 dilution (1 hour at RT), followed by FITC Goat Anti-Mouse (green) at 1/50 (1 hour at RT).

Immunohistochemistry (Formalin/PFA-fixed paraffin-embedded sections) - Anti-TRPV3 antibody [N15/4] (ab85022)



Flow Cytometry - Anti-TRPV3 antibody [N15/4]  
(ab85022)

Overlay histogram showing SH-SY5Y cells stained with ab85022 (red line). The cells were fixed with 80% methanol (5 min) and incubated in 1x PBS / 10% normal goat serum / 0.3M glycine to block non-specific protein-protein interactions. The cells were then incubated with the antibody (ab85022, 1 µg/1x10<sup>6</sup> cells) for 30 min at 22°C. The secondary antibody used was Alexa Fluor® 488 goat anti-mouse IgG (H&L) (**ab150113**) at 1/2000 dilution for 30 min at 22°C. Isotype control antibody (black line) was mouse IgG2a [ICIGG2A] (**ab91361**, 1 µg/1x10<sup>6</sup> cells) used under the same conditions. Unlabelled sample (blue line) was also used as a control. Acquisition of >5,000 events were collected using a 20mW Argon ion laser (488nm) and 525/30 bandpass filter. Please note that Abcam do not have any data for use of this antibody on non-fixed cells. We welcome any customer feedback.



Western blot - Anti-TRPV3 antibody [N15/4]  
(ab85022)

**All lanes :** Anti-TRPV3 antibody [N15/4] (ab85022) at 1 µg/ml

**Lane 1 :** Molecular weight marker

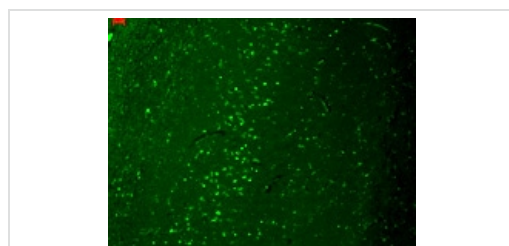
**Lane 2 :** Cell lysates prepared from mixture of human cell lines A431, A549, HCT116, HeLa, HEK293, HepG2, HL-60, HUVEC, Jurkat, MCF7, PC3 and T98G at 15 µg

### Secondary

**Lane 2 :** Sheep Anti-Mouse IgG: HRP for 1 hour at RT

**Predicted band size:** 90 kDa

Block: 1.5% BSA for 30 minutes at RT



Immunohistochemistry (Formalin/PFA-fixed paraffin-embedded sections) - Anti-TRPV3 antibody [N15/4]  
(ab85022)

Immunohistochemical analysis of Bouin's Fixative and paraffin-embedded Human hippocampus tissue labelling TrpV3 with ab85022 at 1/1000 dilution (1 hour at RT), followed by FITC Goat Anti-Mouse (green) at 1/50 (1 hour at RT).

### **Our Abpromise to you: Quality guaranteed and expert technical support**

---

- Replacement or refund for products not performing as stated on the datasheet
- Valid for 12 months from date of delivery
- Response to your inquiry within 24 hours
  
- We provide support in Chinese, English, French, German, Japanese and Spanish
- Extensive multi-media technical resources to help you
- We investigate all quality concerns to ensure our products perform to the highest standards

If the product does not perform as described on this datasheet, we will offer a refund or replacement. For full details of the Abpromise, please visit <https://www.abcam.com/abpromise> or contact our technical team.

### **Terms and conditions**

---

- Guarantee only valid for products bought direct from Abcam or one of our authorized distributors