

Product datasheet

Anti-Trypanosoma brucei phosphoglycerate kinase antibody ab89651

★★★★★ [2 Abreviews](#) [1 Image](#)

Overview

Product name	Anti-Trypanosoma brucei phosphoglycerate kinase antibody
Description	Rabbit polyclonal to Trypanosoma brucei phosphoglycerate kinase
Host species	Rabbit
Tested applications	Suitable for: ICC/IF, WB
Species reactivity	Reacts with: Trypanosoma brucei
Immunogen	Synthetic peptide derived from the C terminal domain of Trypanosoma brucei phosphoglycerate kinase.
General notes	<p>The Life Science industry has been in the grips of a reproducibility crisis for a number of years. Abcam is leading the way in addressing this with our range of recombinant monoclonal antibodies and knockout edited cell lines for gold-standard validation. Please check that this product meets your needs before purchasing.</p> <p>If you have any questions, special requirements or concerns, please send us an inquiry and/or contact our Support team ahead of purchase. Recommended alternatives for this product can be found below, along with publications, customer reviews and Q&As</p>

Properties

Form	Liquid
Storage instructions	Shipped at 4°C. Upon delivery aliquot and store at -20°C. Avoid freeze / thaw cycles.
Storage buffer	Constituent: Whole serum
Purity	Whole antiserum
Clonality	Polyclonal
Isotype	IgG

Applications

The Abpromise guarantee Our **Abpromise guarantee** covers the use of ab89651 in the following tested applications. The application notes include recommended starting dilutions; optimal dilutions/concentrations should be determined by the end user.

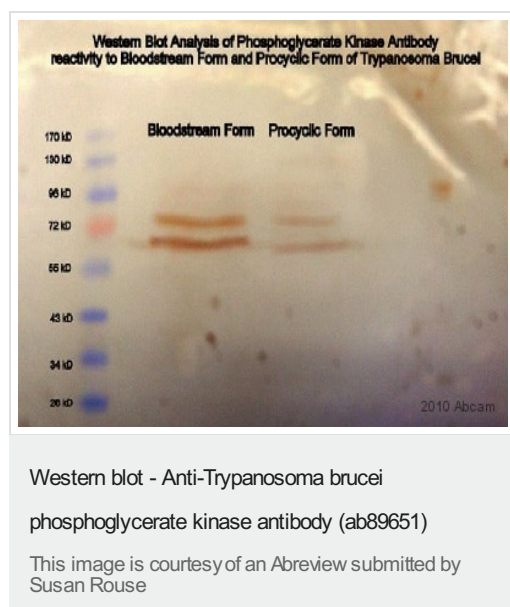
Application	Abreviews	Notes
ICC/IF		Use at an assay dependent concentration.
WB	★★★★★ (1)	1/200 - 1/2000. Predicted molecular weight: 55 kDa.

Target

Relevance

Belongs to the phosphoglycerate kinase family.

Images



All lanes : Anti-*Trypanosoma brucei* phosphoglycerate kinase antibody (ab89651) at 1/200 dilution (in TBS + 5% milk for 12 hours at 4°C)

Lane 1 : Whole cell lysate of *Trypanosoma brucei* - procyclic form

Lane 2 : Whole cell lysate of *Trypanosoma brucei* - bloodstream

Lysates/proteins at 20000000 cells per lane.

Secondary

All lanes : A biotin-conjugated Goat anti-rabbit IgG polyclonal at 1/200 dilution

Predicted band size: 55 kDa

Observed band size: 65,75 kDa

Blocking Step: 5% Milk for 1 hour at 25°C

Detection Method: DAB

Please note: All products are "FOR RESEARCH USE ONLY. NOT FOR USE IN DIAGNOSTIC PROCEDURES"

Our Abpromise to you: Quality guaranteed and expert technical support

- Replacement or refund for products not performing as stated on the datasheet
- Valid for 12 months from date of delivery
- Response to your inquiry within 24 hours
- We provide support in Chinese, English, French, German, Japanese and Spanish
- Extensive multi-media technical resources to help you

- We investigate all quality concerns to ensure our products perform to the highest standards

If the product does not perform as described on this datasheet, we will offer a refund or replacement. For full details of the Abpromise, please visit <https://www.abcam.com/abpromise> or contact our technical team.

Terms and conditions

- Guarantee only valid for products bought direct from Abcam or one of our authorized distributors