

Product datasheet

Anti-TSH beta antibody [EPR8198] ab155958

Recombinant RabMAb

★☆☆☆☆ [1 Abreviews](#) [2 References](#) [5 Images](#)

Overview

Product name	Anti-TSH beta antibody [EPR8198]
Description	Rabbit monoclonal [EPR8198] to TSH beta
Host species	Rabbit
Tested applications	Suitable for: mIHC, WB, IHC-P Unsuitable for: IP
Species reactivity	Reacts with: Rabbit, Human
Immunogen	Synthetic peptide. This information is proprietary to Abcam and/or its suppliers.
Positive control	WB: Rabbit pituitary tissue lysate, Human recombinant TSH alpha/beta protein IHC/P: Human pituitary tissue
General notes	<p>This product is a recombinant monoclonal antibody, which offers several advantages including:</p> <ul style="list-style-type: none">- High batch-to-batch consistency and reproducibility- Improved sensitivity and specificity- Long-term security of supply- Animal-free production <p>For more information see here.</p> <p>Our RabMAb[®] technology is a patented hybridoma-based technology for making rabbit monoclonal antibodies. For details on our patents, please refer to RabMAb[®] patents.</p> <p>Mouse, Rat: We have preliminary internal testing data to indicate this antibody may not react with these species. Please contact us for more information.</p>

Properties

Form	Liquid
Storage instructions	Shipped at 4°C. Store at -20°C.
Storage buffer	pH: 7.2 Preservative: 0.01% Sodium azide Constituents: 9% PBS, 40% Glycerol (glycerin, glycerine), 0.05% BSA, 50% Tissue culture supernatant
Purity	Protein A purified

Clonality	Monoclonal
Clone number	EPR8198
Isotype	IgG

Applications

The Abpromise guarantee Our **Abpromise guarantee** covers the use of ab155958 in the following tested applications. The application notes include recommended starting dilutions; optimal dilutions/concentrations should be determined by the end user.

Application	Abreviews	Notes
mIHC		1/500.
WB	★☆☆☆☆ (1)	1/1000 - 1/10000. Predicted molecular weight: 16 kDa.
IHC-P		1/250 - 1/500. Perform heat mediated antigen retrieval before commencing with IHC staining protocol.

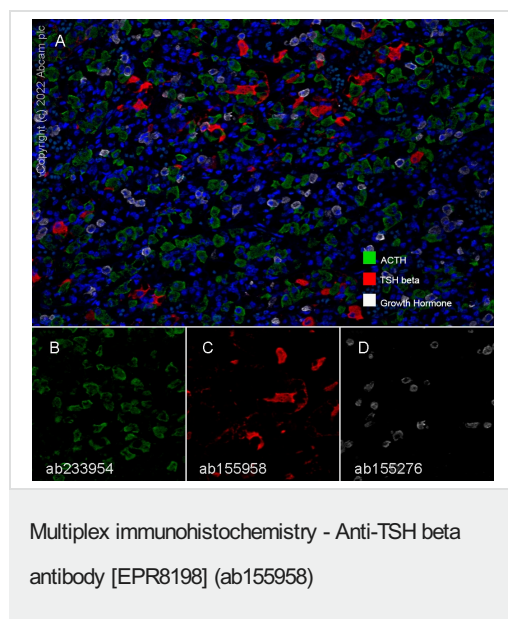
Application notes Is unsuitable for IP.

Target

Relevance Various hormones are secreted from the anterior pituitary during development and growth. Thyroid Stimulating Hormone (TSH) is secreted from the anterior pituitary and controls thyroid structure and metabolism

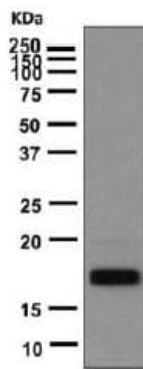
Cellular localization Secreted

Images



Fluorescence multiplex immunohistochemical analysis of human pituitary gland tissue (formalin-fixed paraffin-embedded section). Panel A shows merged staining of anti-ACTH stained on corticotrophs (**ab233954**; green; Opal™520) at 1:5000 (0.214 µg/ml) [Panel B], anti-TSH beta stained on thyrotrophs (ab155958; red; Opal™570) at 1:500 (1.728 µg/ml) [Panel C], and anti-Growth Hormone stained on somatotrophs (**ab155276**; gray; Opal™690) at 1:5000 (0.044 µg/ml) [Panel D] on human pituitary gland. DAPI was used as a nuclear counter stain. Followed by Opal Polymer HRP Ms + Rb secondary antibody. The immunostaining was performed on a Leica Biosystems BOND® RX instrument with an Opal™ 4-color kit. Image acquisition was performed with Leica SP8 confocal microscope. The section was incubated in three rounds of staining: in the order of **ab155276**, **ab233954**, and ab155958 for 30 mins at room temperature. Each round was followed by a separate fluorescent tyramide signal amplification system. Heat mediated

antigen retrieval with Tris-EDTA buffer (pH 9.0, epitope retrieval solution2) for 20 mins was used.



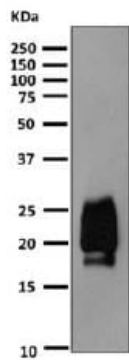
Western blot - Anti-TSH beta antibody [EPR8198] (ab155958)

Anti-TSH beta antibody [EPR8198] (ab155958) at 1/1000 dilution + Rabbit pituitary tissue lysate at 10 µg

Secondary

Goat anti-rabbit HRP at 1/2000 dilution

Predicted band size: 16 kDa



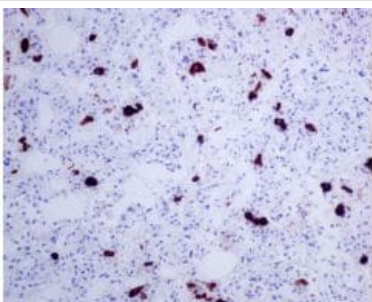
Western blot - Anti-TSH beta antibody [EPR8198] (ab155958)

Anti-TSH beta antibody [EPR8198] (ab155958) at 1/1000 dilution + Human recombinant TSH alpha/beta protein at 0.01 µg

Secondary

Goat anti-rabbit HRP at 1/2000 dilution

Predicted band size: 16 kDa




Immunohistochemistry (Formalin/PFA-fixed paraffin-embedded sections) - Anti-TSH beta antibody [EPR8198] (ab155958)

Immunohistochemical analysis of paraffin-embedded Human pituitary tissue, labeling TSH beta with ab155958 at 1/250 dilution.

Perform heat mediated antigen retrieval before commencing with IHC staining protocol.

Why choose a recombinant antibody?



Research with confidence
Consistent and reproducible results

Long-term and scalable supply
Recombinant technology

Success from the first experiment
Confirmed specificity

Ethical standards compliant
Animal-free production

Anti-TSH beta antibody [EPR8198] (ab155958)

Please note: All products are "FOR RESEARCH USE ONLY. NOT FOR USE IN DIAGNOSTIC PROCEDURES"

Our Abpromise to you: Quality guaranteed and expert technical support

- Replacement or refund for products not performing as stated on the datasheet
- Valid for 12 months from date of delivery
- Response to your inquiry within 24 hours
- We provide support in Chinese, English, French, German, Japanese and Spanish
- Extensive multi-media technical resources to help you
- We investigate all quality concerns to ensure our products perform to the highest standards

If the product does not perform as described on this datasheet, we will offer a refund or replacement. For full details of the Abpromise, please visit <https://www.abcam.com/abpromise> or contact our technical team.

Terms and conditions

- Guarantee only valid for products bought direct from Abcam or one of our authorized distributors