


## Product datasheet

### Anti-TTK/Mps1 antibody ab24226

[1 Image](#)

#### Overview

<b>Product name</b>	Anti-TTK/Mps1 antibody
<b>Description</b>	Rabbit polyclonal to TTK/Mps1
<b>Host species</b>	Rabbit
<b>Specificity</b>	ab24226 reacts with TTK (Mps1) protein.
<b>Tested applications</b>	<b>Suitable for:</b> WB
<b>Species reactivity</b>	<b>Reacts with:</b> Human <b>Predicted to work with:</b> Rabbit, Horse, Guinea pig, Cow, Dog, Chimpanzee, Ferret, Cynomolgus monkey, Rhesus monkey, Orangutan, Bat 
<b>Immunogen</b>	Synthetic peptide corresponding to Human TTK/Mps1 aa 700-750. Sequence: DVWSLGCILYYMTYGKTPFQQIINQISKLHAIDPNHEIEFPDI PEKDLQ D

 [Run BLAST with](#)

 [Run BLAST with](#)

#### General notes

The Life Science industry has been in the grips of a reproducibility crisis for a number of years. Abcam is leading the way in addressing this with our range of recombinant monoclonal antibodies and knockout edited cell lines for gold-standard validation. Please check that this product meets your needs before purchasing.

If you have any questions, special requirements or concerns, please send us an inquiry and/or contact our Support team ahead of purchase. Recommended alternatives for this product can be found below, along with publications, customer reviews and Q&As

#### Properties

<b>Form</b>	Liquid
<b>Storage instructions</b>	Shipped at 4°C. Upon delivery aliquot and store at -20°C. Avoid freeze / thaw cycles.
<b>Storage buffer</b>	Preservative: 0.09% Sodium azide Constituents: 0.021% PBS, 1.764% Sodium citrate, 1.815% Tris
<b>Purity</b>	Immunogen affinity purified
<b>Purification notes</b>	Antibody was affinity purified using an epitope specific to TTK immobilized on solid support.
<b>Clonality</b>	Polyclonal

Isotype

IgG

## Applications

### The Abpromise guarantee

Our **Abpromise guarantee** covers the use of ab24226 in the following tested applications.

The application notes include recommended starting dilutions; optimal dilutions/concentrations should be determined by the end user.

Application	Abreviews	Notes
WB		1/2500 - 1/25000. Detects a band of approximately 95 kDa (predicted molecular weight: 95 kDa).

## Target

### Function

Phosphorylates proteins on serine, threonine, and tyrosine. Probably associated with cell proliferation. Essential for chromosome alignment by enhancing AURKB activity (via direct CDCA8 phosphorylation) at the centromere, and for the mitotic checkpoint.

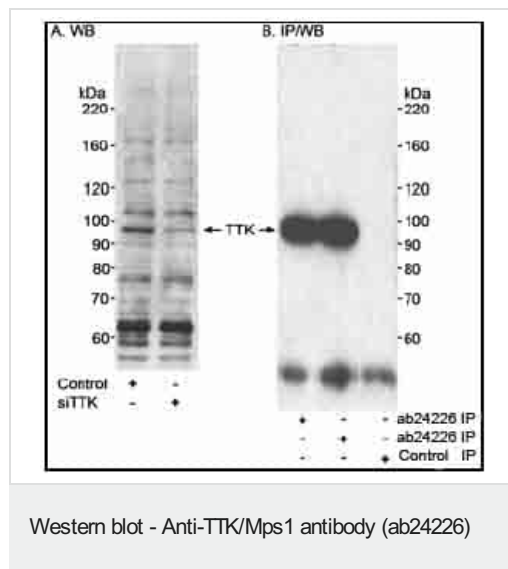
### Tissue specificity

Present in rapidly proliferating cell lines.

### Sequence similarities

Belongs to the protein kinase superfamily. Ser/Thr protein kinase family.  
Contains 1 protein kinase domain.

## Images



### Detection of Human TTK/Mps1 by Western Blot and Immunoprecipitation.

Samples: Whole cell lysate (15 and 50 µg for A; 50 µg for B; 2 mg for B) from HeLa cells. In B, HeLa cells were treated with an siRNA for vimentin (control) or TTK/Mps1 Ab24226 used at 0.033 (A) and 0.33 (B) µg/ml for WB and at 1 µg/2 mg lysate for IP (C). TTK/Mps1 was also immunoprecipitated with Ab24226 using 1 µg/2 mg lysate. IP reactions were controlled using normal rabbit IgG (control IP). Immunoprecipitated TTK/Mps1 was blotted using a goat antibody directed to an upstream epitope on TTK/Mps1. Detection: Chemiluminescence with exposure times of 1 minute (A), 15 seconds (B) and 30 seconds (C).

**Please note:** All products are "FOR RESEARCH USE ONLY. NOT FOR USE IN DIAGNOSTIC PROCEDURES"

## Our Abpromise to you: Quality guaranteed and expert technical support

- Replacement or refund for products not performing as stated on the datasheet

- Valid for 12 months from date of delivery
- Response to your inquiry within 24 hours
- We provide support in Chinese, English, French, German, Japanese and Spanish
- Extensive multi-media technical resources to help you
- We investigate all quality concerns to ensure our products perform to the highest standards

If the product does not perform as described on this datasheet, we will offer a refund or replacement. For full details of the Abpromise, please visit <https://www.abcam.com/abpromise> or contact our technical team.

#### **Terms and conditions**

---

- Guarantee only valid for products bought direct from Abcam or one of our authorized distributors