


Product datasheet

Anti-TUBB2A + TUBB2B antibody ab155311

[4 Images](#)

Overview

Product name	Anti-TUBB2A + TUBB2B antibody
Description	Rabbit polyclonal to TUBB2A + TUBB2B
Host species	Rabbit
Tested applications	Suitable for: WB, ICC/IF
Species reactivity	Reacts with: Mouse, Human Predicted to work with: Rat, Chicken, Cow, Pig, Monkey 
Immunogen	Recombinant fragment, corresponding to a region within amino acids 1-237 of Human TUBB2A (UniProt Q13885).
Positive control	293T, A431, Jurkat, Raji, NIH-3T3 and mouse brain lysates; HeLa cells.
General notes	<p>The Life Science industry has been in the grips of a reproducibility crisis for a number of years. Abcam is leading the way in addressing this with our range of recombinant monoclonal antibodies and knockout edited cell lines for gold-standard validation. Please check that this product meets your needs before purchasing.</p> <p>If you have any questions, special requirements or concerns, please send us an inquiry and/or contact our Support team ahead of purchase. Recommended alternatives for this product can be found below, along with publications, customer reviews and Q&As</p>

Properties

Form	Liquid
Storage instructions	Shipped at 4°C. Upon delivery aliquot. Store at -20°C or -80°C. Avoid freeze / thaw cycle.
Storage buffer	pH: 7.00 Preservative: 0.01% Thimerosal (merthiolate) Constituents: 78.99% PBS, 1% BSA, 20% Glycerol (glycerin, glycerine)
Purity	Immunogen affinity purified
Clonality	Polyclonal
Isotype	IgG

Applications

The Abpromise guarantee

Our **Abpromise guarantee** covers the use of ab155311 in the following tested applications.

The application notes include recommended starting dilutions; optimal dilutions/concentrations should be determined by the end user.

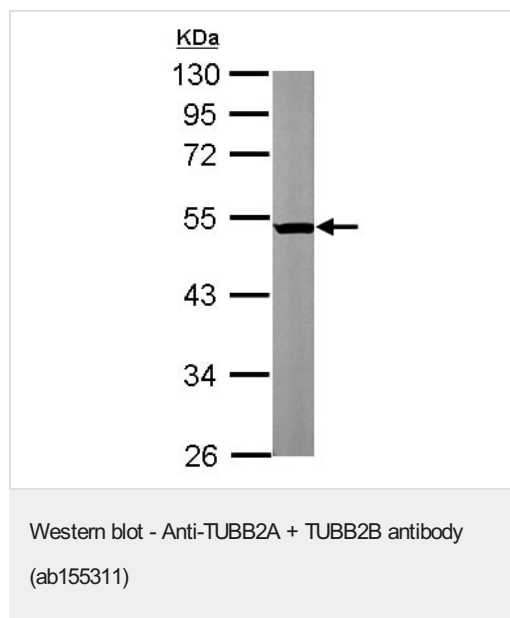
Application	Abreviews	Notes
WB		1/1000 - 1/10000. Predicted molecular weight: 50 kDa.
ICC/IF		1/100 - 1/1000.

Target

Cellular localization

TUBB2A: Cytoplasm > cytoskeleton. TUBB2B: Cytoplasm, cytoskeleton.

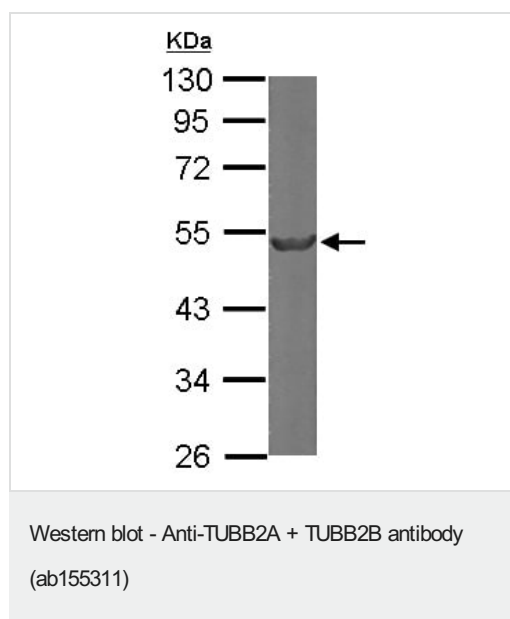
Images



Anti-TUBB2A + TUBB2B antibody (ab155311) at 1/3000 dilution + NIH-3T3 whole cell lysate at 30 μ g

Predicted band size: 50 kDa

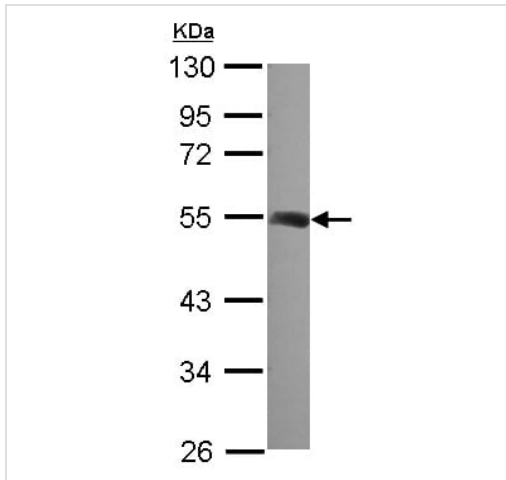
10% SDS PAGE



Anti-TUBB2A + TUBB2B antibody (ab155311) at 1/5000 dilution + Mouse brain whole cell lysate at 50 μ g

Predicted band size: 50 kDa

10% SDS PAGE

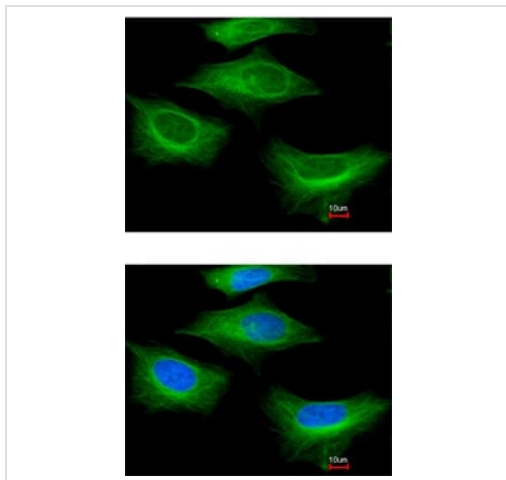


Anti-TUBB2A + TUBB2B antibody (ab155311) at 1/1000 dilution +
293T whole cell lysate at 30 µg

Predicted band size: 50 kDa

10% SDS PAGE

Western blot - Anti-TUBB2A + TUBB2B antibody
(ab155311)



Immunofluorescent analysis of paraformaldehyde-fixed HeLa cells
labeling beta II Tubulin with ab155311 at 1/200 dilution. Lower panel
co-stained with Hoechst 33342 .

Immunocytochemistry/ Immunofluorescence - Anti-
TUBB2A + TUBB2B antibody (ab155311)

Please note: All products are "FOR RESEARCH USE ONLY. NOT FOR USE IN DIAGNOSTIC PROCEDURES"

Our Abpromise to you: Quality guaranteed and expert technical support

- Replacement or refund for products not performing as stated on the datasheet
- Valid for 12 months from date of delivery
- Response to your inquiry within 24 hours
- We provide support in Chinese, English, French, German, Japanese and Spanish
- Extensive multi-media technical resources to help you
- We investigate all quality concerns to ensure our products perform to the highest standards

If the product does not perform as described on this datasheet, we will offer a refund or replacement. For full details of the Abpromise, please visit <https://www.abcam.com/abpromise> or contact our technical team.

Terms and conditions

- Guarantee only valid for products bought direct from Abcam or one of our authorized distributors