

## Product datasheet

### Anti-TYRO3 antibody [OTI5B7] ab117877

3 Images

#### Overview

<b>Product name</b>	Anti-TYRO3 antibody [OTI5B7]
<b>Description</b>	Mouse monoclonal [OTI5B7] to TYRO3
<b>Host species</b>	Mouse
<b>Tested applications</b>	<b>Suitable for:</b> Flow Cyt (Intra), IP, ICC/IF
<b>Species reactivity</b>	<b>Reacts with:</b> Human
<b>Immunogen</b>	Recombinant full length protein corresponding to Human TYRO3. Protein expressed in HEK-293T cells. Database link: <a href="#">Q06418</a>
<b>Positive control</b>	ICC/IF: pCMV6-ENTRY TYRO3 cDNA transfected COS-7 cells. Flow Cyt (Intra): HEK-293T cells transfected with overexpress plasmid. IP: DDK tagged TYRO3 overexpression lysates.
<b>General notes</b>	<p>The clone number has been updated from 5B7 to OTI5B7, both clone numbers name the same clone.</p> <p>The Life Science industry has been in the grips of a reproducibility crisis for a number of years. Abcam is leading the way in addressing this with our range of recombinant monoclonal antibodies and knockout edited cell lines for gold-standard validation. Please check that this product meets your needs before purchasing.</p> <p>If you have any questions, special requirements or concerns, please send us an inquiry and/or contact our Support team ahead of purchase. Recommended alternatives for this product can be found below, along with publications, customer reviews and Q&amp;As</p>

#### Properties

<b>Form</b>	Liquid
<b>Storage instructions</b>	Shipped at 4°C. Store at +4°C short term (1-2 weeks). Upon delivery aliquot. Store at -20°C. Avoid freeze / thaw cycle.
<b>Storage buffer</b>	pH: 7.30 Preservative: 0.02% Sodium azide Constituents: 50% Glycerol, 1% BSA, PBS
<b>Purity</b>	Affinity purified
<b>Purification notes</b>	Purified from cell culture supernatant by affinity chromatography
<b>Clonality</b>	Monoclonal

Clone number OTI5B7

Isotype IgG2a

## Applications

**The Abpromise guarantee** Our **Abpromise guarantee** covers the use of ab117877 in the following tested applications.

The application notes include recommended starting dilutions; optimal dilutions/concentrations should be determined by the end user.

Application	Abreviews	Notes
Flow Cyt (Intra)		1/100. <b>ab170191</b> - Mouse monoclonal IgG2a, is suitable for use as an isotype control with this antibody.
IP		Use a concentration of 4 µg/ml.
ICC/IF		1/100.

## Target

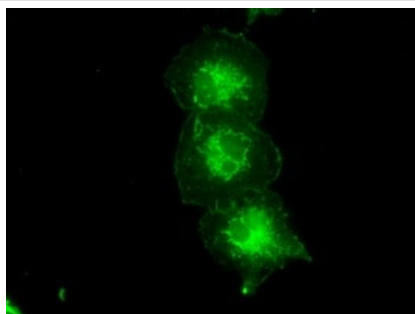
**Function** May be involved in cell adhesion processes, particularly in the central nervous system. In case of filovirus infection, seems to function as a cell entry factor.

**Tissue specificity** Abundant in the brain and lower levels in other tissues.

**Sequence similarities** Belongs to the protein kinase superfamily. Tyr protein kinase family. AXL/UFO subfamily. Contains 2 fibronectin type-III domains.  
Contains 2 Ig-like C2-type (immunoglobulin-like) domains.  
Contains 1 protein kinase domain.

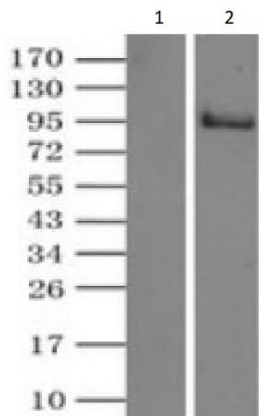
**Cellular localization** Cell membrane.

## Images



pCMV6-ENTRY TYRO3 cDNA transfected COS-7 (African green monkey kidney fibroblast-like cell line) cells stained for TYRO3 using ab117877 at a 1/100 dilution in ICC/IF.

Immunocytochemistry/ Immunofluorescence - Anti-TYRO3 antibody [OTI5B7] (ab117877)



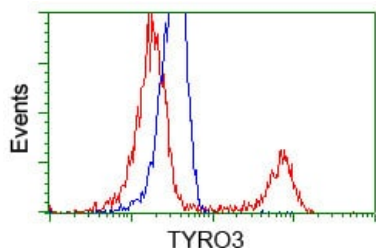
Immunoprecipitation - Anti-TYRO3 antibody  
[OTI5B7] (ab117877)

For each experiment, 500 µl of DDK tagged TYRO3 overexpression lysates (at 1:5 dilution with HEK-293T lysate), 2 µg of ab117877 and 20 µl (0.1 mg) of goat anti-mouse conjugated magnetic beads were mixed and incubated overnight. After extensive wash to remove any non-specific binding, the immunoprecipitated products were analyzed with rabbit anti-DDK polyclonal antibody.

**Lane 1 :** Negative control: IP without adding ab117877

**Lane 2 :** Anti-TYRO3 antibody [OTI5B7] (ab117877) at 2 µg

**All lanes :**



Flow Cytometry (Intracellular) - Anti-TYRO3 antibody  
[OTI5B7] (ab117877)

HEK-293T (Human epithelial cell line from embryonic kidney transformed with large T antigen) cells transfected with either pCMV6-ENTRY TYRO3 (Red) or empty vector control plasmid (Blue) were immunostained with ab117877 at 1/100 dilution and then analyzed by Flow Cytometry (Intracellular).

**Please note:** All products are "FOR RESEARCH USE ONLY. NOT FOR USE IN DIAGNOSTIC PROCEDURES"

### Our Abpromise to you: Quality guaranteed and expert technical support

- Replacement or refund for products not performing as stated on the datasheet
- Valid for 12 months from date of delivery
- Response to your inquiry within 24 hours
- We provide support in Chinese, English, French, German, Japanese and Spanish
- Extensive multi-media technical resources to help you
- We investigate all quality concerns to ensure our products perform to the highest standards

If the product does not perform as described on this datasheet, we will offer a refund or replacement. For full details of the Abpromise, please visit <https://www.abcam.com/abpromise> or contact our technical team.

### Terms and conditions

- Guarantee only valid for products bought direct from Abcam or one of our authorized distributors