

Product datasheet

Anti-Ube2L6 antibody [EPR4267(2)] ab109086

Recombinant RabMAb

★★★★★ 1 Abreviews 4 References 4 Images

Overview

Product name	Anti-Ube2L6 antibody [EPR4267(2)]
Description	Rabbit monoclonal [EPR4267(2)] to Ube2L6
Host species	Rabbit
Tested applications	Suitable for: WB, IHC-P Unsuitable for: Flow Cyt
Species reactivity	Reacts with: Human
Immunogen	Synthetic peptide. This information is proprietary to Abcam and/or its suppliers.
Positive control	Human fetal thymus, Human lymph node, Daudi, and MOLT4 lysates; Human kidney and uterus tissues.
General notes	<p>This product is a recombinant monoclonal antibody, which offers several advantages including:</p> <ul style="list-style-type: none"> - High batch-to-batch consistency and reproducibility - Improved sensitivity and specificity - Long-term security of supply - Animal-free production <p>For more information see here.</p> <p>Our RabMAb® technology is a patented hybridoma-based technology for making rabbit monoclonal antibodies. For details on our patents, please refer to RabMAb® patents.</p> <p>Mouse, Rat: We have preliminary internal testing data to indicate this antibody may not react with these species. Please contact us for more information.</p>

Properties

Form	Liquid
Storage instructions	Shipped at 4°C. Store at -20°C. Stable for 12 months at -20°C.
Storage buffer	<p>pH: 7.20</p> <p>Preservative: 0.05% Sodium azide</p> <p>Constituents: 0.1% BSA, 40% Glycerol (glycerin, glycerine), 9.85% Tris glycine, 50% Tissue culture supernatant</p>
Purity	Protein A purified

Clonality	Monoclonal
Clone number	EPR4267(2)
Isotype	IgG

Applications

The Abpromise guarantee Our **Abpromise guarantee** covers the use of ab109086 in the following tested applications. The application notes include recommended starting dilutions; optimal dilutions/concentrations should be determined by the end user.

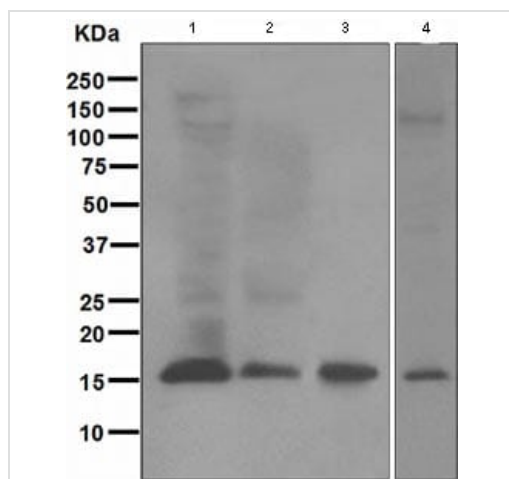
Application	Abreviews	Notes
WB	★★★★★ (1)	1/1000 - 1/10000. Predicted molecular weight: 18 kDa.
IHC-P		1/250 - 1/500. Perform heat mediated antigen retrieval with citrate buffer pH 6 before commencing with IHC staining protocol. Antigen retrieval is recommended.

Application notes Is unsuitable for Flow Cyt.

Target

Function	Catalyzes the covalent attachment of ubiquitin or ISG15 to other proteins. Functions in the E6/E6-AP-induced ubiquitination of p53/TP53.
Tissue specificity	Present in natural killer cells (at protein level).
Pathway	Protein modification; protein ubiquitination.
Sequence similarities	Belongs to the ubiquitin-conjugating enzyme family.
Post-translational modifications	ISGylated.

Images



Western blot - Anti-Ube2L6 antibody [EPR4267(2)]
(ab109086)

All lanes : Anti-Ube2L6 antibody [EPR4267(2)] (ab109086) at
1/1000 dilution

Lane 1 : Human fetal thymus tissue lysate

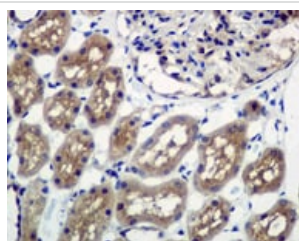
Lane 2 : Human lymph node tissue lysate

Lane 3 : Daudi cell lysate

Lane 4 : MOLT4 cell lysate

Lysates/proteins at 10 µg per lane.

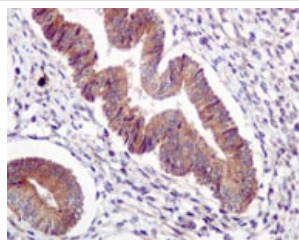
Predicted band size: 18 kDa



Immunohistochemistry (Formalin/PFA-fixed paraffin-
embedded sections) - Anti-Ube2L6 antibody
[EPR4267(2)] (ab109086)

ab109086 at 1/250 dilution staining Ube2L6 in Human kidney by
Immunohistochemistry, Paraffin-embedded tissue.

Perform heat mediated antigen retrieval with citrate buffer pH 6
before commencing with IHC staining protocol.



Immunohistochemistry (Formalin/PFA-fixed paraffin-
embedded sections) - Anti-Ube2L6 antibody
[EPR4267(2)] (ab109086)

ab109086 at 1/250 dilution staining Ube2L6 in Human uterus by
Immunohistochemistry, Paraffin-embedded tissue.

Perform heat mediated antigen retrieval with citrate buffer pH 6
before commencing with IHC staining protocol.

Why choose a recombinant antibody?



Research with confidence
Consistent and reproducible results



Long-term and scalable supply
Recombinant technology



Success from the first experiment
Confirmed specificity



Ethical standards compliant
Animal-free production

Anti-Ube2L6 antibody [EPR4267(2)] (ab109086)

Please note: All products are "FOR RESEARCH USE ONLY. NOT FOR USE IN DIAGNOSTIC PROCEDURES"

Our Abpromise to you: Quality guaranteed and expert technical support

- Replacement or refund for products not performing as stated on the datasheet
- Valid for 12 months from date of delivery
- Response to your inquiry within 24 hours
- We provide support in Chinese, English, French, German, Japanese and Spanish
- Extensive multi-media technical resources to help you
- We investigate all quality concerns to ensure our products perform to the highest standards

If the product does not perform as described on this datasheet, we will offer a refund or replacement. For full details of the Abpromise, please visit <https://www.abcam.com/abpromise> or contact our technical team.

Terms and conditions

- Guarantee only valid for products bought direct from Abcam or one of our authorized distributors