


Product datasheet

Anti-UBE2M/UBC12 antibody [EPR5333] ab109507

Recombinant RabMAb

[10 References](#) [6 Images](#)

Overview

Product name	Anti-UBE2M/UBC12 antibody [EPR5333]
Description	Rabbit monoclonal [EPR5333] to UBE2M/UBC12
Host species	Rabbit
Tested applications	Suitable for: Flow Cyt (Intra), WB, IHC-P, ICC/IF
Species reactivity	Reacts with: Human Predicted to work with: Mouse, Rat 
Immunogen	Synthetic peptide. This information is proprietary to Abcam and/or its suppliers.
Positive control	WB: HEK-293T and Ramos cell lysates. IHC-P: Human colonic adenocarcinoma and lung carcinoma tissues. ICC/IF: Ramos cells.
General notes	<p>This product is a recombinant monoclonal antibody, which offers several advantages including:</p> <ul style="list-style-type: none"> - High batch-to-batch consistency and reproducibility - Improved sensitivity and specificity - Long-term security of supply - Animal-free production <p>For more information see here.</p> <p>Our RabMAb[®] technology is a patented hybridoma-based technology for making rabbit monoclonal antibodies. For details on our patents, please refer to RabMAb[®] patents.</p>

Properties

Form	Liquid
Storage instructions	Shipped at 4°C. Store at -20°C. Stable for 12 months at -20°C.
Storage buffer	pH: 7.20 Preservative: 0.05% Sodium azide Constituents: 0.1% BSA, 40% Glycerol (glycerin, glycerine), 9.85% Tris glycine, 50% Tissue culture supernatant
Purity	Protein A purified
Clonality	Monoclonal
Clone number	EPR5333

Isotype

IgG

Applications

The Abpromise guarantee

Our **Abpromise guarantee** covers the use of ab109507 in the following tested applications.

The application notes include recommended starting dilutions; optimal dilutions/concentrations should be determined by the end user.

Application	Abreviews	Notes
Flow Cyt (Intra)		1/100 - 1/1000. ab172730 - Rabbit monoclonal IgG, is suitable for use as an isotype control with this antibody.
WB		1/10000 - 1/50000. Detects a band of approximately 20 kDa (predicted molecular weight: 21 kDa).
IHC-P		1/100 - 1/250. Perform heat mediated antigen retrieval with citrate buffer pH 6 before commencing with IHC staining protocol.
ICC/IF		1/250.

Target

Function

Accepts the ubiquitin-like protein NEDD8 from the UBA3-NAE1 E1 complex and catalyzes its covalent attachment to other proteins. The specific interaction with the E3 ubiquitin ligase RBX1, but not RBX2, suggests that the RBX1-UBE2M complex neddylates specific target proteins, such as CUL1, CUL2, CUL3 and CUL4. Involved in cell proliferation.

Pathway

Protein modification; protein neddylation.

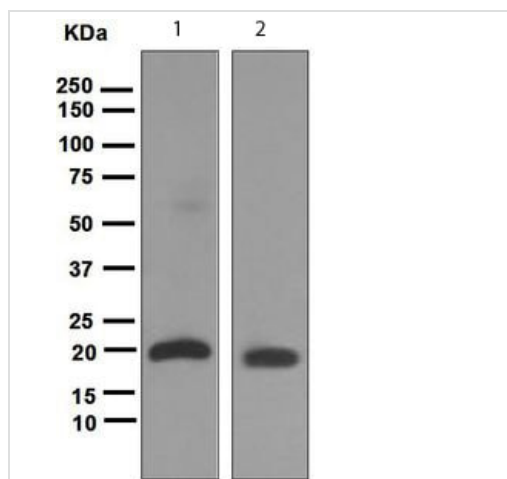
Sequence similarities

Belongs to the ubiquitin-conjugating enzyme family. UBC12 subfamily.

Domain

Both the N-terminal docking peptide and the catalytic core domain must bind the UBA3-NAE1 complex simultaneously for optimal transfer of NEDD8.

Images



Western blot - Anti-UBE2M/UBC12 antibody
[EPR5333] (ab109507)

All lanes : Anti-UBE2M/UBC12 antibody [EPR5333] (ab109507)
at 1/10000 dilution

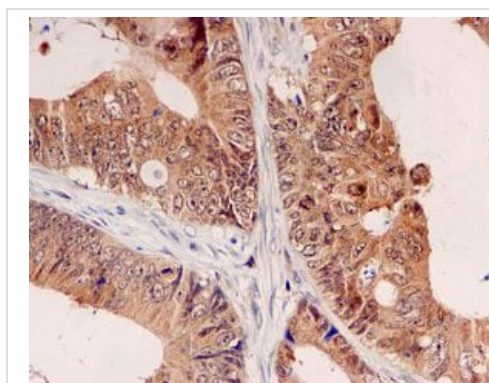
Lane 1 : HEK-293T cell lysate

Lane 2 : Ramos cell lysate

Lysates/proteins at 10 µg per lane.

Predicted band size: 21 kDa

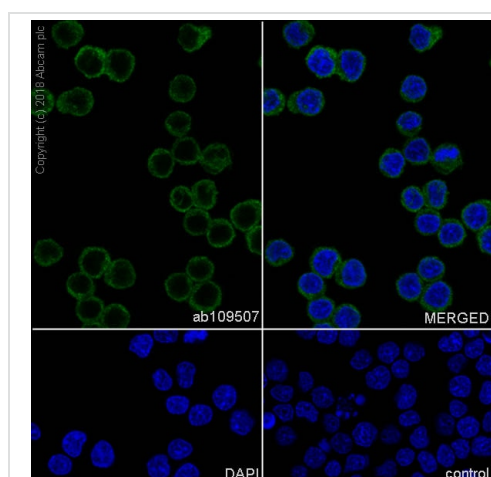
Observed band size: 20 kDa



Immunohistochemistry (Formalin/PFA-fixed paraffin-embedded sections) - Anti-UBE2M/UBC12 antibody
[EPR5333] (ab109507)

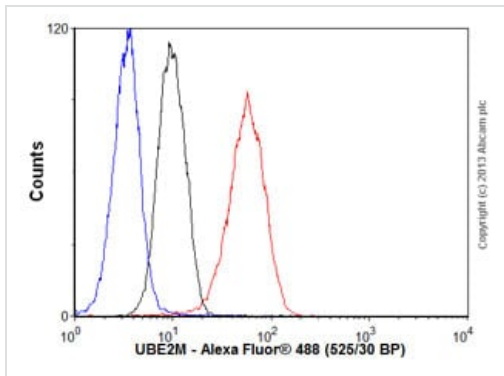
Immunohistochemical analysis of paraffin-embedded human colonic adenocarcinoma tissue using ab109507 at a dilution of 1/100.

Perform heat mediated antigen retrieval with citrate buffer pH 6 before commencing with IHC staining protocol.



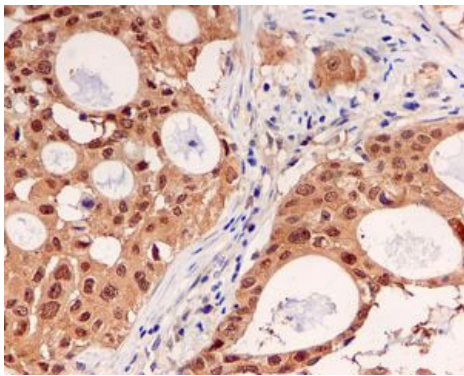
Immunocytochemistry/ Immunofluorescence - Anti-UBE2M/UBC12 antibody [EPR5333] (ab109507)

Immunocytochemistry/ Immunofluorescence analysis of Ramos (human Burkitt's lymphoma B lymphocyte) cells labeling UBE2M/UBC12 with purified ab109507 at 1/250 dilution (8 µg/mL). Cells were fixed in 4% Paraformaldehyde and permeabilized with 0.1% tritonX-100. Goat anti rabbit IgG (Alexa Fluor® 488, **ab150077**) was used as the secondary antibody at 1/1000 (2 µg/mL) dilution. DAPI (blue) was used as nuclear counterstain.



Flow Cytometry (Intracellular) - Anti-UBE2M/UBC12 antibody [EPR5333] (ab109507)

Overlay histogram showing Ramos cells stained with ab109507 (red line). The cells were fixed with 4% paraformaldehyde (10 min) and then permeabilized with 0.1% PBS-Tween for 20 min. The cells were then incubated in 1x PBS / 10% normal goat serum / 0.3M glycine to block non-specific protein-protein interactions followed by the antibody (ab109507, 1/1000 dilution) for 30 min at 22°C. The secondary antibody used was Alexa Fluor® 488 goat anti-rabbit IgG (H&L) ([ab150077](#)) at 1/2000 dilution for 30 min at 22°C. Isotype control antibody (black line) was rabbit IgG (monoclonal) (0.1µg/1x10⁶ cells) used under the same conditions. Unlabelled sample (blue line) was also used as a control. Acquisition of >5,000 events were collected using a 20mW Argon ion laser (488nm) and 525/30 bandpass filter. This antibody gave a positive signal in Ramos cells fixed with 80% methanol (5 min)/permeabilized with 0.1% PBS-Tween for 20 min used under the same conditions.



Immunohistochemistry (Formalin/PFA-fixed paraffin-embedded sections) - Anti-UBE2M/UBC12 antibody [EPR5333] (ab109507)

Immunohistochemical analysis of paraffin-embedded Human lung carcinoma tissue using ab109507 at a dilution of 1/100.

Perform heat mediated antigen retrieval with citrate buffer pH 6 before commencing with IHC staining protocol.

Why choose a recombinant antibody?



Research with confidence
Consistent and reproducible results



Long-term and scalable supply
Recombinant technology



Success from the first experiment
Confirmed specificity



Ethical standards compliant
Animal-free production

Anti-UBE2M/UBC12 antibody [EPR5333]
(ab109507)

Please note: All products are "FOR RESEARCH USE ONLY. NOT FOR USE IN DIAGNOSTIC PROCEDURES"

Our Abpromise to you: Quality guaranteed and expert technical support

- Replacement or refund for products not performing as stated on the datasheet
- Valid for 12 months from date of delivery
- Response to your inquiry within 24 hours
- We provide support in Chinese, English, French, German, Japanese and Spanish
- Extensive multi-media technical resources to help you
- We investigate all quality concerns to ensure our products perform to the highest standards

If the product does not perform as described on this datasheet, we will offer a refund or replacement. For full details of the Abpromise, please visit <https://www.abcam.com/abpromise> or contact our technical team.

Terms and conditions

- Guarantee only valid for products bought direct from Abcam or one of our authorized distributors