

Product datasheet

Anti-Ubiquilin/UBQLN1 antibody ab3341

★★★★★ [1 Abreviews](#) [8 References](#) [4 Images](#)

Overview

Product name	Anti-Ubiquilin/UBQLN1 antibody
Description	Rabbit polyclonal to Ubiquilin/UBQLN1
Host species	Rabbit
Tested applications	Suitable for: IHC-P, WB
Species reactivity	Reacts with: Mouse, Human, Chinese hamster
Immunogen	Synthetic peptide corresponding to Mouse Ubiquilin/UBQLN1 aa 2-18. Sequence: AESAESGGPPGAQDSAA

 [Run BLAST with](#)

 [Run BLAST with](#)

General notes

The Life Science industry has been in the grips of a reproducibility crisis for a number of years. Abcam is leading the way in addressing this with our range of recombinant monoclonal antibodies and knockout edited cell lines for gold-standard validation. Please check that this product meets your needs before purchasing.

If you have any questions, special requirements or concerns, please send us an inquiry and/or contact our Support team ahead of purchase. Recommended alternatives for this product can be found below, along with publications, customer reviews and Q&As

Properties

Form	Liquid
Storage instructions	Shipped at 4°C. Store at +4°C short term (1-2 weeks). Upon delivery aliquot. Store at -20°C or -80°C. Avoid freeze / thaw cycle.
Storage buffer	Constituents: 0.1% BSA, 99% PBS
Purity	Immunogen affinity purified
Clonality	Polyclonal
Isotype	IgG

Applications

The Abpromise guarantee

Our [Abpromise guarantee](#) covers the use of ab3341 in the following tested applications.

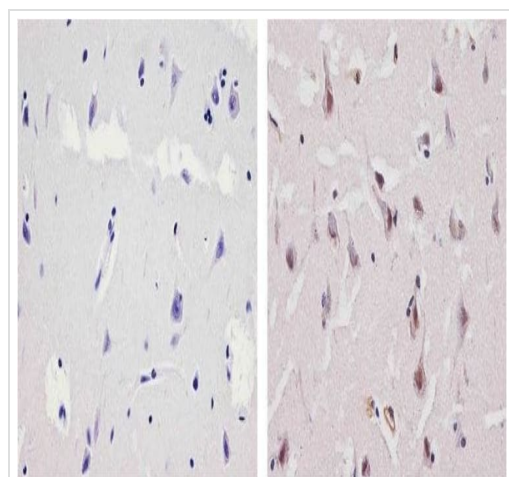
The application notes include recommended starting dilutions; optimal dilutions/concentrations should be determined by the end user.

Application	Abreviews	Notes
IHC-P		1/20 - 1/100. Perform heat mediated antigen retrieval with citrate buffer pH 6 before commencing with IHC staining protocol.
WB	★★★★★ (1)	Use a concentration of 1 µg/ml. Predicted molecular weight: 63 kDa. By Western blot, this antibody detects an ~63 kDa protein representing Ubiquilin from CHO cell extract.

Target

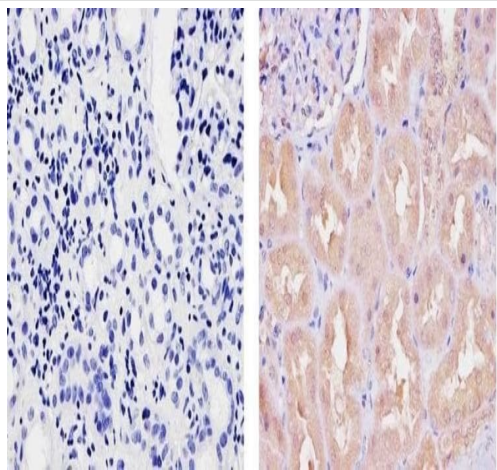
Function	Links CD47 to the cytoskeleton. Promotes the surface expression of GABA-A receptors (By similarity). Promotes the accumulation of uncleaved PSEN1 and PSEN2 by stimulating their biosynthesis. Has no effect on PSEN1 and PSEN2 degradation.
Tissue specificity	Ubiquitous. Highly expressed throughout the brain; detected in neurons and in neuropathological lesions, such as neurofibrillary tangles and Lewy bodies. Highly expressed in heart, placenta, pancreas, lung, liver, skeletal muscle and kidney.
Sequence similarities	Contains 1 UBA domain. Contains 1 ubiquitin-like domain.
Domain	Binds PSEN1 and PSEN2 via its UBA domain.
Post-translational modifications	Phosphorylated.
Cellular localization	Cytoplasm. Nucleus.

Images



Immunohistochemistry (Formalin/PFA-fixed paraffin-embedded sections) - Anti-Ubiquilin/UBQLN1 antibody (ab3341)

Immunohistochemistry analysis of Ubiquilin showing staining in the nucleus and weak staining in the cytoplasm of paraffin-embedded human brain tissue (right) compared to a negative control without primary antibody (left). To expose target proteins, antigen retrieval was performed using 10mM sodium citrate (pH 6.0), microwaved for 8-15 min. Following antigen retrieval, tissues were blocked in 3% H₂O₂-methanol for 15 min at room temperature, washed with ddH₂O and PBS, and then probed with ab3341 diluted in 3% BSA-PBS at a dilution of 1:100 for 1 hour at 37°C in a humidified chamber. Tissues were washed extensively in PBST and detection was performed using an HRP-conjugated secondary antibody followed by colorimetric detection using a DAB kit. Tissues were counterstained with hematoxylin and dehydrated with ethanol and xylene to prep for mounting.



Immunohistochemistry (Formalin/PFA-fixed paraffin-embedded sections) - Anti-Ubiquilin/UBQLN1 antibody (ab3341)

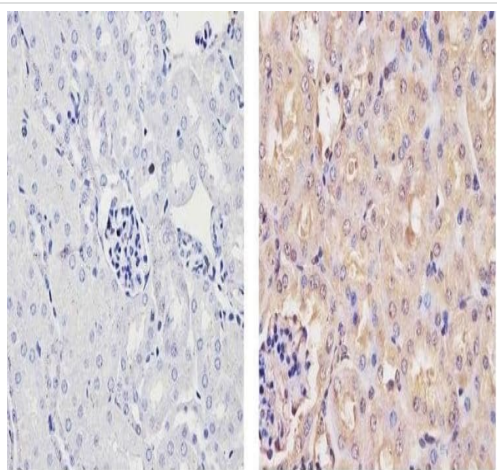
Immunohistochemistry analysis of Ubiquilin showing staining in the cytoplasm and nucleus of paraffin-embedded human kidney tissue (right) compared to a negative control without primary antibody (left). To expose target proteins, antigen retrieval was performed using 10mM sodium citrate (pH 6.0), microwaved for 8-15 min. Following antigen retrieval, tissues were blocked in 3% H₂O₂-methanol for 15 min at room temperature, washed with ddH₂O and PBS, and then probed with ab3341 diluted in 3% BSA-PBS at a dilution of 1:100 for 1 hour at 37°C in a humidified chamber. Tissues were washed extensively in PBST and detection was performed using an HRP-conjugated secondary antibody followed by colorimetric detection using a DAB kit. Tissues were counterstained with hematoxylin and dehydrated with ethanol and xylene to prep for mounting.



Western blot - Anti-Ubiquilin/UBQLN1 antibody (ab3341)

Anti-Ubiquilin/UBQLN1 antibody (ab3341) + CHO (Chinese hamster ovary cell line) whole cell lysate

Predicted band size: 63 kDa



Immunohistochemistry (Formalin/PFA-fixed paraffin-embedded sections) - Anti-Ubiquilin/UBQLN1 antibody (ab3341)

Immunohistochemistry analysis of Ubiquilin showing staining in the cytoplasm and nucleus of paraffin-embedded mouse kidney tissue (right) compared to a negative control without primary antibody (left). To expose target proteins, antigen retrieval was performed using 10mM sodium citrate (pH 6.0), microwaved for 8-15 min. Following antigen retrieval, tissues were blocked in 3% H₂O₂-methanol for 15 min at room temperature, washed with ddH₂O and PBS, and then probed with ab3341 diluted in 3% BSA-PBS at a dilution of 1:20 for 1 hour at 37°C in a humidified chamber. Tissues were washed extensively in PBST and detection was performed using an HRP-conjugated secondary antibody followed by colorimetric detection using a DAB kit. Tissues were counterstained with hematoxylin and dehydrated with ethanol and xylene to prep for mounting.

Please note: All products are "FOR RESEARCH USE ONLY. NOT FOR USE IN DIAGNOSTIC PROCEDURES"

Our Abpromise to you: Quality guaranteed and expert technical support

- Replacement or refund for products not performing as stated on the datasheet
- Valid for 12 months from date of delivery
- Response to your inquiry within 24 hours

- We provide support in Chinese, English, French, German, Japanese and Spanish
- Extensive multi-media technical resources to help you
- We investigate all quality concerns to ensure our products perform to the highest standards

If the product does not perform as described on this datasheet, we will offer a refund or replacement. For full details of the Abpromise, please visit <https://www.abcam.com/abpromise> or contact our technical team.

Terms and conditions

- Guarantee only valid for products bought direct from Abcam or one of our authorized distributors