

## Product datasheet

# Anti-UGPase antibody [EPR10626] ab157473

Recombinant RabMAb

[1 References](#) [8 Images](#)

### Overview

---

<b>Product name</b>	Anti-UGPase antibody [EPR10626]
<b>Description</b>	Rabbit monoclonal [EPR10626] to UGPase
<b>Host species</b>	Rabbit
<b>Tested applications</b>	<b>Suitable for:</b> WB, IHC-P, ICC/IF, Flow Cyt (Intra)
<b>Species reactivity</b>	<b>Reacts with:</b> Human
<b>Immunogen</b>	Synthetic peptide corresponding to Human UGPase. Database link: <a href="#">Q16851</a>
<b>Positive control</b>	Fetal liver, HepG2 and HeLa lysates; Human muscle tissue; HeLa cells.
<b>General notes</b>	This product is a recombinant monoclonal antibody, which offers several advantages including: <ul style="list-style-type: none"><li>- High batch-to-batch consistency and reproducibility</li><li>- Improved sensitivity and specificity</li><li>- Long-term security of supply</li><li>- Animal-free production</li></ul> For more information <a href="#">see here</a> . Our RabMAb <sup>®</sup> technology is a patented hybridoma-based technology for making rabbit monoclonal antibodies. For details on our patents, please refer to <a href="#">RabMAb<sup>®</sup> patents</a> .

### Properties

---

<b>Form</b>	Liquid
<b>Storage instructions</b>	Shipped at 4°C. Store at -20°C.
<b>Storage buffer</b>	pH: 7.2 Preservative: 0.01% Sodium azide Constituents: 9% PBS, 40% Glycerol (glycerin, glycerine), 0.05% BSA, 50% Tissue culture supernatant
<b>Purity</b>	Tissue culture supernatant
<b>Clonality</b>	Monoclonal
<b>Clone number</b>	EPR10626
<b>Isotype</b>	IgG

## Applications

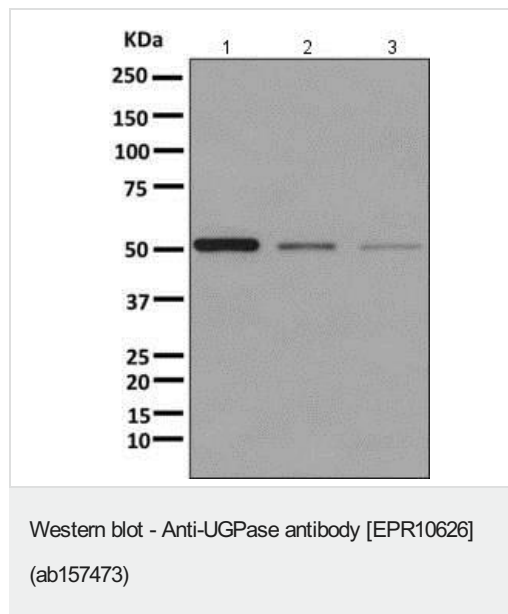
**The Abpromise guarantee** Our **Abpromise guarantee** covers the use of ab157473 in the following tested applications. The application notes include recommended starting dilutions; optimal dilutions/concentrations should be determined by the end user.

Application	Abreviews	Notes
WB		1/1000 - 1/10000. Predicted molecular weight: 57 kDa.
IHC-P		1/250 - 1/500. Perform heat mediated antigen retrieval with citrate buffer pH 6 before commencing with IHC staining protocol.
ICC/IF		1/250 - 1/500.
Flow Cyt (Intra)		1/10 - 1/100. <b>ab172730</b> - Rabbit monoclonal IgG, is suitable for use as an isotype control with this antibody.

## Target

**Function** Plays a central role as a glucosyl donor in cellular metabolic pathways.  
**Sequence similarities** Belongs to the UDPGP type 1 family.  
**Cellular localization** Cytoplasm.

## Images



**All lanes** : Anti-UGPase antibody [EPR10626] (ab157473) at 1/1000 dilution

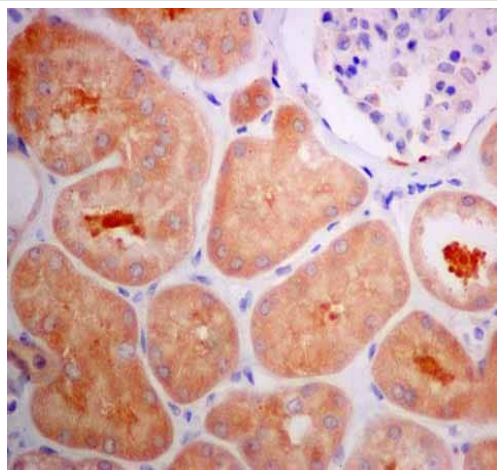
**Lane 1** : Fetal liver lysate  
**Lane 2** : HepG2 cell lysate  
**Lane 3** : HeLa cell lysate

Lysates/proteins at 10 µg per lane.

### Secondary

**All lanes** : HRP labelled goat anti-rabbit at 1/2000 dilution

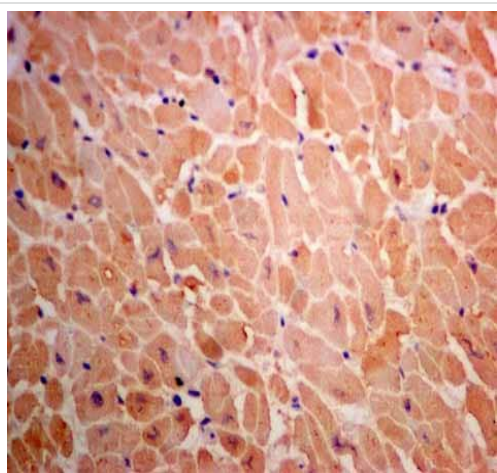
**Predicted band size:** 57 kDa



Immunohistochemistry (Formalin/PFA-fixed paraffin-embedded sections) - Anti-UGPase antibody [EPR10626] (ab157473)

ab157473 showing +ve staining in Human normal kidney.

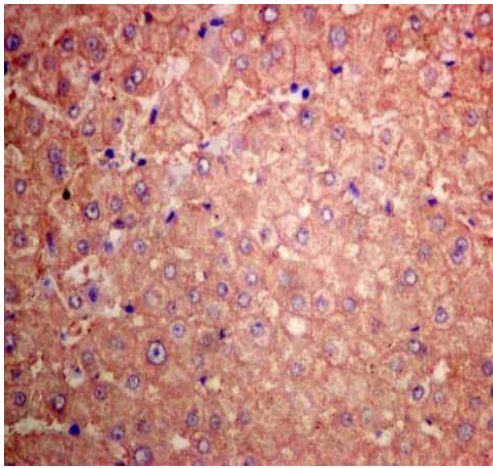
Perform heat mediated antigen retrieval with citrate buffer pH 6 before commencing with IHC staining protocol.



Immunohistochemistry (Formalin/PFA-fixed paraffin-embedded sections) - Anti-UGPase antibody [EPR10626] (ab157473)

ab157473 showing +ve staining in Human heart.

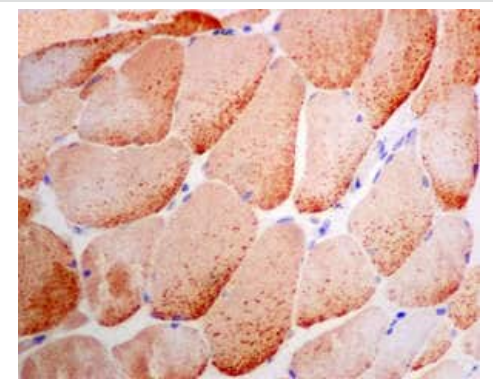
Perform heat mediated antigen retrieval with citrate buffer pH 6 before commencing with IHC staining protocol.



Immunohistochemistry (Formalin/PFA-fixed paraffin-embedded sections) - Anti-UGPase antibody [EPR10626] (ab157473)

ab157473 showing +ve staining in Human normal liver.

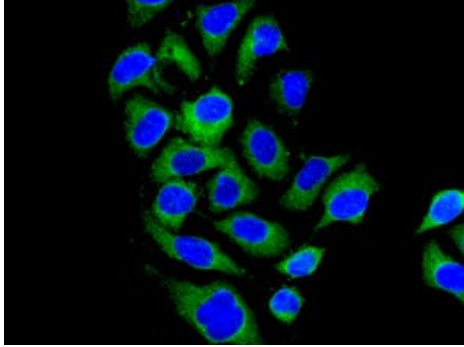
Perform heat mediated antigen retrieval with citrate buffer pH 6 before commencing with IHC staining protocol.



Immunohistochemistry (Formalin/PFA-fixed paraffin-embedded sections) - Anti-UGPase antibody [EPR10626] (ab157473)

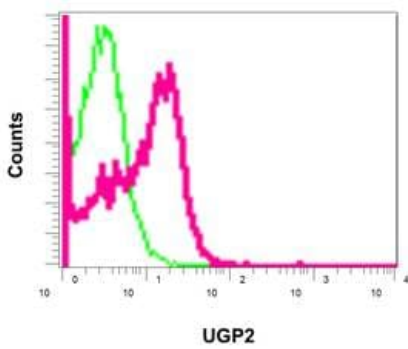
Immunohistochemical analysis of paraffin-embedded Human muscle tissue labeling UGPase with ab157473 at 1/250 dilution.

Perform heat mediated antigen retrieval with citrate buffer pH 6 before commencing with IHC staining protocol.



Immunofluorescent analysis of HeLa cells labeling UGPase with ab157473 at 1/250 dilution.

Immunocytochemistry/ Immunofluorescence - Anti-UGPase antibody [EPR10626] (ab157473)



Intracellular flow cytometric analysis of permeabilized HeLa cells labeling UGPase with ab157473 at 1/10 dilution (red) compared to a rabbit IgG negative control (green).

Flow Cytometry (Intracellular) - Anti-UGPase antibody [EPR10626] (ab157473)

### Why choose a recombinant antibody?



**Research with confidence**  
Consistent and reproducible results



**Long-term and scalable supply**  
Recombinant technology



**Success from the first experiment**  
Confirmed specificity



**Ethical standards compliant**  
Animal-free production

Anti-UGPase antibody [EPR10626] (ab157473)

**Please note:** All products are "FOR RESEARCH USE ONLY. NOT FOR USE IN DIAGNOSTIC PROCEDURES"

### Our Abpromise to you: Quality guaranteed and expert technical support

---

- Replacement or refund for products not performing as stated on the datasheet
- Valid for 12 months from date of delivery
- Response to your inquiry within 24 hours
- We provide support in Chinese, English, French, German, Japanese and Spanish
- Extensive multi-media technical resources to help you
- We investigate all quality concerns to ensure our products perform to the highest standards

If the product does not perform as described on this datasheet, we will offer a refund or replacement. For full details of the Abpromise, please visit <https://www.abcam.com/abpromise> or contact our technical team.

### Terms and conditions

---

- Guarantee only valid for products bought direct from Abcam or one of our authorized distributors