


Anti-USP24 antibody ab72241

[3 References](#) [2 Images](#)

Overview

Product name	Anti-USP24 antibody
Description	Rabbit polyclonal to USP24
Host species	Rabbit
Tested applications	Suitable for: WB, IP
Species reactivity	Reacts with: Human Predicted to work with: Mouse, Rat, Rabbit, Horse, Guinea pig, Cow, Dog, Pig, Chimpanzee, Ferret, Rhesus monkey, Gorilla, Orangutan, Elephant 
Immunogen	Synthetic peptide from a region between residue 2410 and the C-terminus (residue 2460) of human USP24 (XP_371254.5)
Positive control	Whole cell lysate from Hela and 293T cells.
General notes	<p>The Life Science industry has been in the grips of a reproducibility crisis for a number of years. Abcam is leading the way in addressing this with our range of recombinant monoclonal antibodies and knockout edited cell lines for gold-standard validation. Please check that this product meets your needs before purchasing.</p> <p>If you have any questions, special requirements or concerns, please send us an inquiry and/or contact our Support team ahead of purchase. Recommended alternatives for this product can be found below, along with publications, customer reviews and Q&As</p>

Properties

Form	Liquid
Storage instructions	Shipped at 4°C. Upon delivery aliquot and store at -20°C. Avoid freeze / thaw cycles.
Storage buffer	pH: 7 Preservative: 0.09% Sodium azide Constituents: 1.815% Tris, 1.764% Sodium citrate, 0.021% PBS
Purity	Immunogen affinity purified
Clonality	Polyclonal
Isotype	IgG

Applications

The Abpromise guarantee

Our **Abpromise guarantee** covers the use of ab72241 in the following tested applications.

The application notes include recommended starting dilutions; optimal dilutions/concentrations should be determined by the end user.

Application	Abreviews	Notes
WB		
IP		

Application notes

IP: Use at 2-5µg/mg of lysate.

WB: 1/2,000 - 1/10,000. Detects bands of approximately 71 kDa and 250 kDa (predicted molecular weight: 211 kDa).

Not yet tested in other applications.

Optimal dilutions/concentrations should be determined by the end user.

Target

Function

Involved in the ubiquitin-dependent proteolytic pathway in conjunction with the 26S proteasome.

Sequence similarities

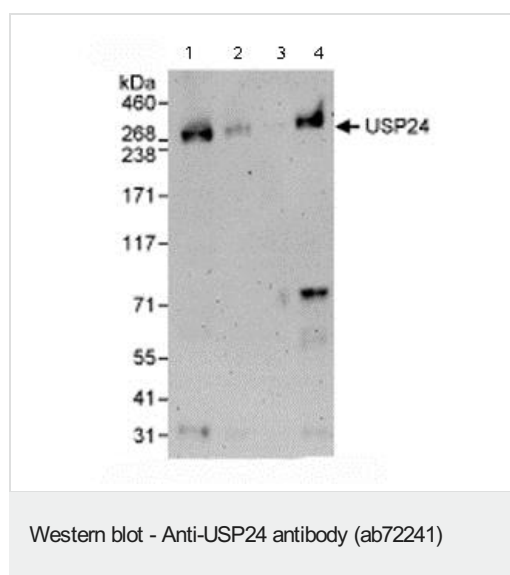
Belongs to the peptidase C19 family.

Contains 1 UBA domain.

Post-translational modifications

Phosphorylated upon DNA damage, probably by ATM or ATR.

Images



All lanes : Anti-USP24 antibody (ab72241) at 0.04 µg/ml

Lane 1 : Whole cell lysate from Hela cells at 50 µg

Lane 2 : Whole cell lysate from Hela cells at 15 µg

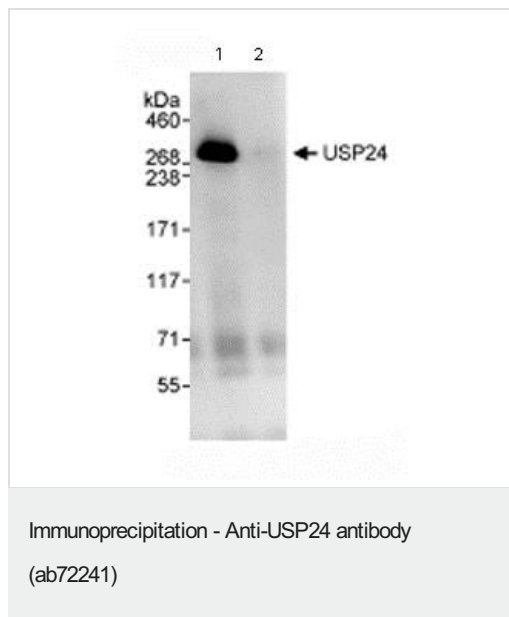
Lane 3 : Whole cell lysate from Hela cells at 5 µg

Lane 4 : Whole cell lysate from 293T cells at 50 µg

Predicted band size: 211 kDa

Observed band size: 250 kDa

Additional bands at: 71 kDa. We are unsure as to the identity of these extra bands.



Immunoprecipitation/ Western Blot of USP24.

Lane 1: ab72241 at 3µg/mg whole cell lysate.

Lane 2: Control IgG.

ab72241 at 1µg/ml for WB.

Whole cell lysate from Hela cells at 1mg for IP, 20% of IP loaded.

Chemiluminescence with an exposure time of 30 seconds.

Please note: All products are "FOR RESEARCH USE ONLY. NOT FOR USE IN DIAGNOSTIC PROCEDURES"

Our Abpromise to you: Quality guaranteed and expert technical support

- Replacement or refund for products not performing as stated on the datasheet
- Valid for 12 months from date of delivery
- Response to your inquiry within 24 hours
- We provide support in Chinese, English, French, German, Japanese and Spanish
- Extensive multi-media technical resources to help you
- We investigate all quality concerns to ensure our products perform to the highest standards

If the product does not perform as described on this datasheet, we will offer a refund or replacement. For full details of the Abpromise, please visit <https://www.abcam.com/abpromise> or contact our technical team.

Terms and conditions

- Guarantee only valid for products bought direct from Abcam or one of our authorized distributors