




Product datasheet

Anti-VEGFB antibody ab185696

★★★★★ [1 Abreviews](#) [7 References](#) [1 Image](#)

Overview

Product name	Anti-VEGFB antibody
Description	Rabbit polyclonal to VEGFB
Host species	Rabbit
Tested applications	Suitable for: WB
Species reactivity	Reacts with: Mouse Predicted to work with: Cow, Human 
Immunogen	Recombinant fragment corresponding to Human VEGFB aa 1 to the C-terminus. Database link: P49765  Run BLAST with  Run BLAST with
Positive control	WB: Mouse heart tissue lysate.
General notes	<p>The Life Science industry has been in the grips of a reproducibility crisis for a number of years. Abcam is leading the way in addressing this with our range of recombinant monoclonal antibodies and knockout edited cell lines for gold-standard validation. Please check that this product meets your needs before purchasing.</p> <p>If you have any questions, special requirements or concerns, please send us an inquiry and/or contact our Support team ahead of purchase. Recommended alternatives for this product can be found below, along with publications, customer reviews and Q&As</p>

Properties

Form	Liquid
Storage instructions	Shipped at 4°C. Store at +4°C short term (1-2 weeks). Upon delivery aliquot. Store at -20°C long term. Avoid freeze / thaw cycle.
Storage buffer	pH: 7.30 Preservative: 0.02% Sodium azide Constituents: 49% PBS, 50% Glycerol
Purity	Immunogen affinity purified
Clonality	Polyclonal
Isotype	IgG

Applications

The Abpromise guarantee

Our **Abpromise guarantee** covers the use of ab185696 in the following tested applications.

The application notes include recommended starting dilutions; optimal dilutions/concentrations should be determined by the end user.

Application	Abreviews	Notes
WB		1/500 - 1/2000. Predicted molecular weight: 22 kDa.

Target

Function

Growth factor for endothelial cells. VEGF-B167 binds heparin and neuropilin-1 whereas the binding to neuropilin-1 of VEGF-B186 is regulated by proteolysis.

Tissue specificity

Expressed in all tissues except liver. Highest levels found in heart, skeletal muscle and pancreas.

Sequence similarities

Belongs to the PDGF/VEGF growth factor family.

Post-translational modifications

VEGF-B186 is O-glycosylated.

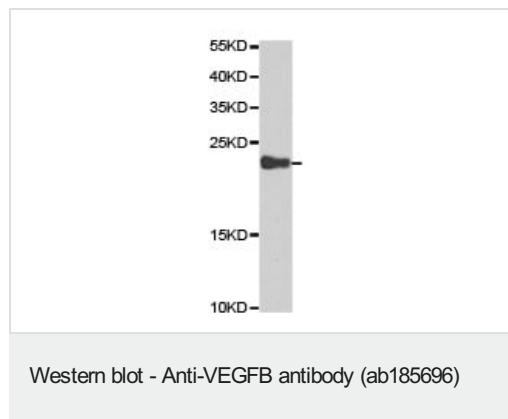
Cellular localization

Secreted. Secreted but remains associated to cells or to the extracellular matrix unless released by heparin.

Form

There are 2 isoforms produced by alternative splicing.

Images



Anti-VEGFB antibody (ab185696) at 1/500 dilution + Mouse heart tissue lysate

Predicted band size: 22 kDa

Please note: All products are "FOR RESEARCH USE ONLY. NOT FOR USE IN DIAGNOSTIC PROCEDURES"

Our Abpromise to you: Quality guaranteed and expert technical support

- Replacement or refund for products not performing as stated on the datasheet
- Valid for 12 months from date of delivery
- Response to your inquiry within 24 hours
- We provide support in Chinese, English, French, German, Japanese and Spanish
- Extensive multi-media technical resources to help you

- We investigate all quality concerns to ensure our products perform to the highest standards

If the product does not perform as described on this datasheet, we will offer a refund or replacement. For full details of the Abpromise, please visit <https://www.abcam.com/abpromise> or contact our technical team.

Terms and conditions

- Guarantee only valid for products bought direct from Abcam or one of our authorized distributors