


Anti-Vitronectin/S-Protein antibody ab113700

[3 References](#) [3 Images](#)

Overview

Product name	Anti-Vitronectin/S-Protein antibody
Description	Rabbit polyclonal to Vitronectin/S-Protein
Host species	Rabbit
Tested applications	Suitable for: ICC/IF, WB, IHC-P
Species reactivity	Reacts with: Human Predicted to work with: Chimpanzee, Macaque monkey, Gorilla, Orangutan 
Immunogen	Synthetic peptide. This information is proprietary to Abcam and/or its suppliers.
Positive control	This antibody gave a positive signal in Human Plasma. This antibody gave a positive result in IF in the following Formaldehyde fixed cell line: HepG2. It also gave a positive signal in FFPE human normal liver tissue sections
General notes	<p>The Life Science industry has been in the grips of a reproducibility crisis for a number of years. Abcam is leading the way in addressing this with our range of recombinant monoclonal antibodies and knockout edited cell lines for gold-standard validation. Please check that this product meets your needs before purchasing.</p> <p>If you have any questions, special requirements or concerns, please send us an inquiry and/or contact our Support team ahead of purchase. Recommended alternatives for this product can be found below, along with publications, customer reviews and Q&As</p>

Properties

Form	Liquid
Storage instructions	Shipped at 4°C. Store at +4°C short term (1-2 weeks). Upon delivery aliquot. Store at -20°C or -80°C. Avoid freeze / thaw cycle.
Storage buffer	<p>pH: 7.40</p> <p>Preservative: 0.02% Sodium azide</p> <p>Constituent: PBS</p> <p>Batches of this product that have a concentration < 1mg/ml may have BSA added as a stabilising agent. If you would like information about the formulation of a specific lot, please contact our scientific support team who will be happy to help.</p>
Purity	Immunogen affinity purified

Clonality	Polyclonal
Isotype	IgG

Applications

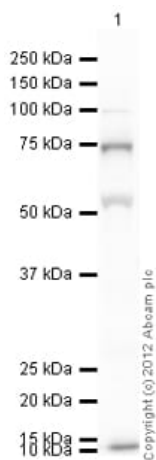
The Abpromise guarantee Our **Abpromise guarantee** covers the use of ab113700 in the following tested applications. The application notes include recommended starting dilutions; optimal dilutions/concentrations should be determined by the end user.

Application	Abreviews	Notes
ICC/IF		Use a concentration of 5 µg/ml.
WB		Use a concentration of 1 µg/ml. Detects a band of approximately 75 kDa (predicted molecular weight: 54 kDa).
IHC-P		Use a concentration of 1 µg/ml. Perform heat mediated antigen retrieval before commencing with IHC staining protocol.

Target

Function	<p>Vitronectin is a cell adhesion and spreading factor found in serum and tissues. Vitronectin interact with glycosaminoglycans and proteoglycans. Is recognized by certain members of the integrin family and serves as a cell-to-substrate adhesion molecule. Inhibitor of the membrane-damaging effect of the terminal cytolytic complement pathway.</p> <p>Somatomedin-B is a growth hormone-dependent serum factor with protease-inhibiting activity.</p>
Tissue specificity	Plasma.
Sequence similarities	<p>Contains 4 hemopexin repeats.</p> <p>Contains 1 SMB (somatomedin-B) domain.</p>
Domain	The SMB domain mediates interaction with SERPINE1/PAI1. The heparin-binding domain mediates interaction with insulin.
Post-translational modifications	<p>Sulfated on 2 tyrosine residues.</p> <p>N- and O-glycosylated.</p> <p>Phosphorylation on Thr-69 and Thr-76 favors cell adhesion and spreading.</p> <p>It has been suggested that the active SMB domain may be permitted considerable disulfide bond heterogeneity or variability, thus two alternate disulfide patterns based on 3D structures are described with 1 disulfide bond conserved in both.</p> <p>Phosphorylation sites are present in the extracellular medium.</p>
Cellular localization	Secreted, extracellular space.

Images



Western blot - Anti-Vitronectin/S-Protein antibody (ab113700)

Anti-Vitronectin/S-Protein antibody (ab113700) at 1 µg/ml + Human Plasma Total Protein Lysate at 10 µg

Secondary

Goat Anti-Rabbit IgG H&L (HRP) preadsorbed ([ab97080](#)) at 1/5000 dilution

Developed using the ECL technique.

Performed under reducing conditions.

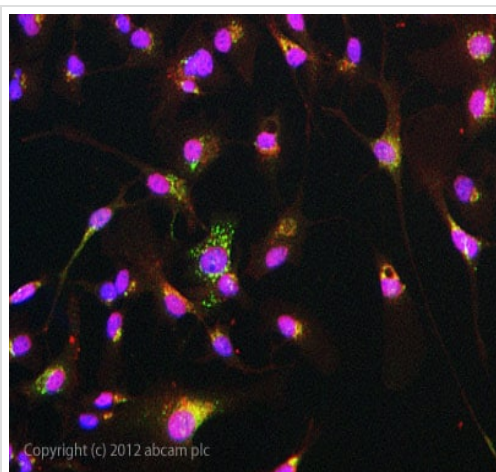
Predicted band size: 54 kDa

Observed band size: 54,75 kDa

Additional bands at: 100 kDa, 12 kDa. We are unsure as to the identity of these extra bands.

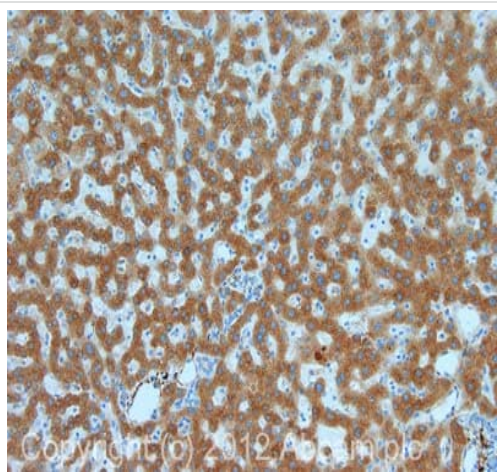
Exposure time: 1 minute

The predicted molecular weight of Vitronectin is 54 kDa (SwissProt), however we expect to observe a band at 75 kDa. Abcam welcomes customer feedback and would appreciate any comments regarding this product and the data presented above.



Immunocytochemistry/ Immunofluorescence - Anti-Vitronectin/S-Protein antibody (ab113700)

ab113700 stained HepG2 cells. The cells were 4% formaldehyde fixed (10 min) and then incubated in 1%BSA / 10% normal goat serum / 0.3M glycine in 0.1% PBS-Tween for 1h to permeabilise the cells and block non-specific protein-protein interactions. The cells were then incubated with the antibody ab113700 at 5µg/ml overnight at +4°C. The secondary antibody (green) was DyLight® 488 goat anti- rabbit ([ab96899](#)) IgG (H+L) used at a 1/1000 dilution for 1h. Alexa Fluor® 594 WGA was used to label plasma membranes (red) at a 1/200 dilution for 1h. DAPI was used to stain the cell nuclei (blue) at a concentration of 1.43µM.



Immunohistochemistry (Formalin/PFA-fixed paraffin-embedded sections) - Anti-Vitronectin/S-Protein antibody (ab113700)

IHC image of Vitronectin/S-Protein staining in human normal liver formalin fixed paraffin embedded tissue section, performed on a Leica Bond™ system using the standard protocol F. The section was pre-treated using heat mediated antigen retrieval with sodium citrate buffer (pH6, epitope retrieval solution 1) for 20 mins. The section was then incubated with ab113700, 1µg/ml, for 15 mins at room temperature and detected using an HRP conjugated compact polymer system. DAB was used as the chromogen. The section was then counterstained with haematoxylin and mounted with DPX.

For other IHC staining systems (automated and non-automated) customers should optimize variable parameters such as antigen retrieval conditions, primary antibody concentration and antibody incubation times.

Please note: All products are "FOR RESEARCH USE ONLY. NOT FOR USE IN DIAGNOSTIC PROCEDURES"

Our Abpromise to you: Quality guaranteed and expert technical support

- Replacement or refund for products not performing as stated on the datasheet
- Valid for 12 months from date of delivery
- Response to your inquiry within 24 hours
- We provide support in Chinese, English, French, German, Japanese and Spanish
- Extensive multi-media technical resources to help you
- We investigate all quality concerns to ensure our products perform to the highest standards

If the product does not perform as described on this datasheet, we will offer a refund or replacement. For full details of the Abpromise, please visit <https://www.abcam.com/abpromise> or contact our technical team.

Terms and conditions

- Guarantee only valid for products bought direct from Abcam or one of our authorized distributors