



# Anti-VLDL Receptor/VLDL-R antibody ab203271

★★★★★ [1 Abreviews](#) [3 References](#) [1 Image](#)

### Overview

<b>Product name</b>	Anti-VLDL Receptor/VLDL-R antibody
<b>Description</b>	Rabbit polyclonal to VLDL Receptor/VLDL-R
<b>Host species</b>	Rabbit
<b>Tested applications</b>	<b>Suitable for:</b> WB
<b>Species reactivity</b>	<b>Reacts with:</b> Human
<b>Immunogen</b>	Synthetic peptide within Human VLDL Receptor/VLDL-R aa 550-650 conjugated to keyhole limpet haemocyanin. The exact immunogen sequence used to generate this antibody is proprietary information. If additional detail on the immunogen is needed to determine the suitability of the antibody for your needs, please <b><a href="#">contact</a></b> our Scientific Support team to discuss your requirements. Database link: <b><a href="#">P98155</a></b>
	<div>  <a href="#">Run BLAST with</a> </div> <div>  <a href="#">Run BLAST with</a> </div>
<b>Positive control</b>	WB: Siha, A549, 293T and A421 cell lysates.
<b>General notes</b>	<p>The Life Science industry has been in the grips of a reproducibility crisis for a number of years. Abcam is leading the way in addressing this with our range of recombinant monoclonal antibodies and knockout edited cell lines for gold-standard validation. Please check that this product meets your needs before purchasing.</p> <p>If you have any questions, special requirements or concerns, please send us an inquiry and/or contact our Support team ahead of purchase. Recommended alternatives for this product can be found below, along with publications, customer reviews and Q&amp;As</p>

### Properties

<b>Form</b>	Liquid
<b>Storage instructions</b>	Shipped at 4°C. Store at +4°C short term (1-2 weeks). Upon delivery aliquot. Store at -20°C long term. Avoid freeze / thaw cycle.
<b>Storage buffer</b>	<p>pH: 7.40</p> <p>Preservative: 0.02% Proclin 300</p> <p>Constituents: 50% Glycerol (glycerin, glycerine), 1% BSA, 48.98% TBS, 1X</p> <p>Aqueous buffered solution</p>
<b>Purity</b>	Protein A purified

<b>Clonality</b>	Polyclonal
<b>Isotype</b>	IgG

## Applications

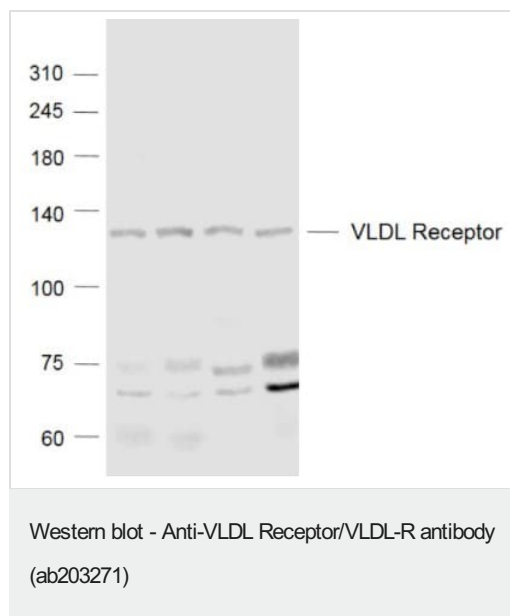
**The Abpromise guarantee** Our **Abpromise guarantee** covers the use of ab203271 in the following tested applications. The application notes include recommended starting dilutions; optimal dilutions/concentrations should be determined by the end user.

Application	Abreviews	Notes
<b>WB</b>		1/100 - 1/1000. Predicted molecular weight: 96 kDa.

## Target

<b>Function</b>	Binds VLDL and transports it into cells by endocytosis. In order to be internalized, the receptor-ligand complexes must first cluster into clathrin-coated pits. Binding to Reelin induces tyrosine phosphorylation of Dab1 and modulation of Tau phosphorylation.
<b>Tissue specificity</b>	Abundant in heart and skeletal muscle; also ovary and kidney; not in liver.
<b>Involvement in disease</b>	Defects in VLDLR are the cause of cerebellar ataxia mental retardation and dysequilibrium syndrome type 1 (CMARQ1) [MIM:224050]; also known as dysequilibrium syndrome (DES) or non-progressive cerebellar disorder with mental retardation. CMARQ1 is a congenital, non-progressive cerebellar ataxia associated with disturbed equilibrium, delayed ambulation, mental retardation and cerebellar hypoplasia. Additional features include short stature, strabismus, pes planus and, rarely, seizures.
<b>Sequence similarities</b>	Contains 3 EGF-like domains. Contains 8 LDL-receptor class A domains. Contains 6 LDL-receptor class B repeats.
<b>Post-translational modifications</b>	Ubiquitinated at Lys-839 by MYLIP leading to degradation.
<b>Cellular localization</b>	Membrane. Membrane > clathrin-coated pit.

## Images



**All lanes :** Anti-VLDL Receptor/VLDL-R antibody (ab203271) at 1/1000 dilution

**Lane 1 :** Human A549 cell lysates

**Lane 2 :** Human 293T cell lysates

**Lane 3 :** Human A431 cell lysates

**Lane 4 :** Human Siha cell lysates

#### Secondary

**All lanes :** A conjugated secondary antibody incubation at 1/20000 dilution

**Predicted band size:** 96 kDa

**Please note:** All products are "FOR RESEARCH USE ONLY. NOT FOR USE IN DIAGNOSTIC PROCEDURES"

#### Our Abpromise to you: Quality guaranteed and expert technical support

- Replacement or refund for products not performing as stated on the datasheet
- Valid for 12 months from date of delivery
- Response to your inquiry within 24 hours
- We provide support in Chinese, English, French, German, Japanese and Spanish
- Extensive multi-media technical resources to help you
- We investigate all quality concerns to ensure our products perform to the highest standards

If the product does not perform as described on this datasheet, we will offer a refund or replacement. For full details of the Abpromise, please visit <https://www.abcam.com/abpromise> or contact our technical team.

#### Terms and conditions

- Guarantee only valid for products bought direct from Abcam or one of our authorized distributors