


Anti-VPS11 antibody ab125083

[4 References](#) [2 Images](#)

Overview

Product name	Anti-VPS11 antibody
Description	Rabbit polyclonal to VPS11
Host species	Rabbit
Tested applications	Suitable for: WB, IP
Species reactivity	Reacts with: Human Predicted to work with: Mouse, Rat, Rabbit, Horse, Guinea pig, Dog, Pig, Ferret, Rhesus monkey, Gorilla, Orangutan, Elephant 
Immunogen	Synthetic peptide, corresponding to a region within amino acids 891-941 of Human VPS11 (NP_068375.3).
Positive control	293T, Jurkat and HeLa whole cell lysates.
General notes	<p>The Life Science industry has been in the grips of a reproducibility crisis for a number of years. Abcam is leading the way in addressing this with our range of recombinant monoclonal antibodies and knockout edited cell lines for gold-standard validation. Please check that this product meets your needs before purchasing.</p> <p>If you have any questions, special requirements or concerns, please send us an inquiry and/or contact our Support team ahead of purchase. Recommended alternatives for this product can be found below, along with publications, customer reviews and Q&As</p>

Properties

Form	Liquid
Storage instructions	Shipped at 4°C. Upon delivery aliquot and store at -20°C. Avoid freeze / thaw cycles.
Storage buffer	<p>pH: 7</p> <p>Preservative: 0.09% Sodium azide</p> <p>Constituent: 99% Tris citrate/phosphate</p> <p>pH 7 to 8</p>
Purity	Immunogen affinity purified
Purification notes	ab125083 was affinity purified using an epitope specific to VPS11 immobilized on solid support.
Clonality	Polyclonal

Isotype

IgG

Applications

The Abpromise guarantee

Our **Abpromise guarantee** covers the use of ab125083 in the following tested applications.

The application notes include recommended starting dilutions; optimal dilutions/concentrations should be determined by the end user.

Application	Abreviews	Notes
WB		1/2000 - 1/10000. Predicted molecular weight: 108 kDa.
IP		Use at 2-10 µg/mg of lysate.

Target

Function

May play a role in vesicle-mediated protein trafficking to lysosomal compartments and in membrane docking/fusion reactions of late endosomes/lysosomes.

Tissue specificity

Ubiquitous. Expression was highest in heart and low in lung.

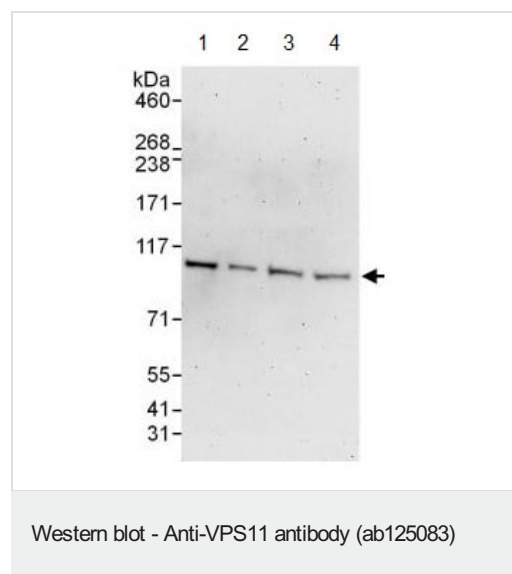
Sequence similarities

Belongs to the VPS11 family.
Contains 1 clathrin repeat.
Contains 1 RING-type zinc finger.

Cellular localization

Late endosome membrane. Lysosome membrane. Cytoplasmic vesicle.

Images



All lanes : Anti-VPS11 antibody (ab125083) at 0.04 µg/ml

Lane 1 : 293T whole cell lysate at 50 µg

Lane 2 : 293T whole cell lysate at 15 µg

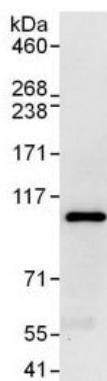
Lane 3 : Jurkat whole cell lysate at 50 µg

Lane 4 : HeLa whole cell lysate at 50 µg

Developed using the ECL technique.

Predicted band size: 108 kDa

Exposure time: 3 minutes



Immunoprecipitation - Anti-VPS11 antibody
(ab125083)

Detection of VPS11 by Western Blot of Immunoprecipitate.
ab125083 at 0.4µg/ml staining VPS11 in 293T whole cell lysate
immunoprecipitated using ab125083 at 6µg/mg lysate (1 mg/IP;
20% of IP loaded/lane).
Detection: Chemiluminescence with exposure time of 30 seconds.

Please note: All products are "FOR RESEARCH USE ONLY. NOT FOR USE IN DIAGNOSTIC PROCEDURES"

Our Abpromise to you: Quality guaranteed and expert technical support

- Replacement or refund for products not performing as stated on the datasheet
- Valid for 12 months from date of delivery
- Response to your inquiry within 24 hours
- We provide support in Chinese, English, French, German, Japanese and Spanish
- Extensive multi-media technical resources to help you
- We investigate all quality concerns to ensure our products perform to the highest standards

If the product does not perform as described on this datasheet, we will offer a refund or replacement. For full details of the Abpromise, please visit <https://www.abcam.com/abpromise> or contact our technical team.

Terms and conditions

- Guarantee only valid for products bought direct from Abcam or one of our authorized distributors