




Product datasheet

Anti-VPS29 antibody ab10160

[9 References](#) [1 Image](#)

Overview

Product name	Anti-VPS29 antibody
Description	Goat polyclonal to VPS29
Host species	Goat
Tested applications	Suitable for: WB
Species reactivity	Reacts with: Human Predicted to work with: Mouse, Rat, Dog 
Immunogen	Synthetic peptide: DDVKVERIEYKKP, corresponding to C terminal amino acids 170-182 of Human VPS29.  Run BLAST with Expasy  Run BLAST with NCBI
Positive control	Human muscle and kidney extracts.
General notes	<p>VPS29, VPS30, and VPS35 proteins are required for the normal recycling of Vps10p, a late Golgi transmembrane protein that acts as the sorting receptor for soluble vacuolar hydrolases, from the prevacuolar endosome back to the Golgi.</p> <p>The Life Science industry has been in the grips of a reproducibility crisis for a number of years. Abcam is leading the way in addressing this with our range of recombinant monoclonal antibodies and knockout edited cell lines for gold-standard validation. Please check that this product meets your needs before purchasing.</p> <p>If you have any questions, special requirements or concerns, please send us an inquiry and/or contact our Support team ahead of purchase. Recommended alternatives for this product can be found below, along with publications, customer reviews and Q&As</p>

Properties

Form	Liquid
Storage instructions	Shipped at 4°C. Upon delivery aliquot and store at -20°C or -80°C. Avoid repeated freeze / thaw cycles.
Storage buffer	pH: 7.30 Preservative: 0.02% Sodium azide Constituents: Tris buffered saline, 0.5% BSA
Purity	Immunogen affinity purified

Purification notes	Purified from goat serum by ammonium sulphate precipitation followed by antigen affinity chromatography using the immunizing peptide.
Primary antibody notes	VPS29, VPS30, and VPS35 proteins are required for the normal recycling of Vps10p, a late Golgi transmembrane protein that acts as the sorting receptor for soluble vacuolar hydrolases, from the prevacuolar endosome back to the Golgi.
Clonality	Polyclonal
Isotype	IgG

Applications

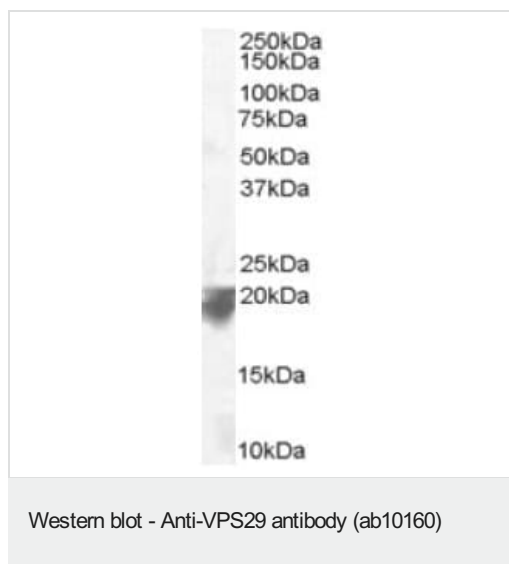
The Abpromise guarantee Our **Abpromise guarantee** covers the use of ab10160 in the following tested applications. The application notes include recommended starting dilutions; optimal dilutions/concentrations should be determined by the end user.

Application	Abreviews	Notes
WB		Use a concentration of 0.1 - 0.3 µg/ml. Predicted molecular weight: 20 kDa. 1 hour primary incubation is recommended for this product.

Target

Function	Essential component of the retromer complex, a complex required to retrieve lysosomal enzyme receptors (IGF2R and M6PR) from endosomes to the trans-Golgi network. Also required to regulate transcytosis of the polymeric immunoglobulin receptor (pIgR-pIgA). Has low protein phosphatase activity towards a serine-phosphorylated peptide derived from IGF2R (in vitro).
Tissue specificity	Ubiquitous. Highly expressed in heart, lung, placenta, spleen, peripheral blood leukocytes, thymus, colon skeletal muscle, kidney and brain.
Sequence similarities	Belongs to the VPS29 family.
Cellular localization	Cytoplasm. Membrane. Endosome membrane.

Images



Anti-VPS29 antibody (ab10160) at 0.1 µg/ml + Human Spleen lysate (RIPA buffer, 35µg total protein per lane)

Predicted band size: 20 kDa

Observed band size: 20 kDa

Primary incubated for 1 hour. Detected by western blot using chemiluminescence.

Please note: All products are "FOR RESEARCH USE ONLY. NOT FOR USE IN DIAGNOSTIC PROCEDURES"

Our Abpromise to you: Quality guaranteed and expert technical support

- Replacement or refund for products not performing as stated on the datasheet
- Valid for 12 months from date of delivery
- Response to your inquiry within 24 hours
- We provide support in Chinese, English, French, German, Japanese and Spanish
- Extensive multi-media technical resources to help you
- We investigate all quality concerns to ensure our products perform to the highest standards

If the product does not perform as described on this datasheet, we will offer a refund or replacement. For full details of the Abpromise, please visit <https://www.abcam.com/abpromise> or contact our technical team.

Terms and conditions

- Guarantee only valid for products bought direct from Abcam or one of our authorized distributors