

Product datasheet

Anti-WASP/Wiskott-Aldrich syndrome protein antibody [EP2541Y] α b75830

Recombinant RabMAb

[5 References](#) [3 Images](#)

Overview

Product name	Anti-WASP/Wiskott-Aldrich syndrome protein antibody [EP2541Y]
Description	Rabbit monoclonal [EP2541Y] to WASP/Wiskott-Aldrich syndrome protein
Host species	Rabbit
Tested applications	Suitable for: Flow Cyt (Intra), WB, ICC/IF Unsuitable for: IP
Species reactivity	Reacts with: Human
Immunogen	Synthetic peptide. This information is proprietary to Abcam and/or its suppliers.
Positive control	WB: TF-1 and U-937 whole cell lysates. ICC/IF: TF-1 cells. Flow Cyt (Intra): U-937 cells.
General notes	<p>This product is a recombinant monoclonal antibody, which offers several advantages including:</p> <ul style="list-style-type: none"> - High batch-to-batch consistency and reproducibility - Improved sensitivity and specificity - Long-term security of supply - Animal-free production <p>For more information see here.</p> <p>Our RabMAb[®] technology is a patented hybridoma-based technology for making rabbit monoclonal antibodies. For details on our patents, please refer to RabMAb[®] patents.</p> <p>Mouse, Rat: We have preliminary internal testing data to indicate this antibody may not react with these species. Please contact us for more information.</p>

Properties

Form	Liquid
Storage instructions	Shipped at 4°C. Upon delivery aliquot and store at -20°C. Avoid freeze / thaw cycles.
Storage buffer	<p>pH: 7.20</p> <p>Preservative: 0.01% Sodium azide</p> <p>Constituents: 0.05% BSA, 40% Glycerol (glycerin, glycerine), 59% PBS</p>
Purity	Protein A purified
Clonality	Monoclonal

Clone number	EP2541Y
Isotype	IgG

Applications

The Abpromise guarantee Our **Abpromise guarantee** covers the use of ab75830 in the following tested applications. The application notes include recommended starting dilutions; optimal dilutions/concentrations should be determined by the end user.

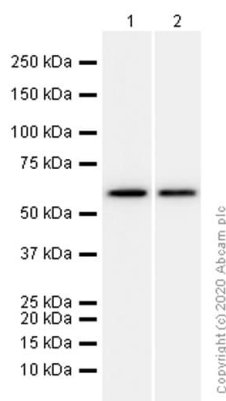
Application	Abreviews	Notes
Flow Cyt (Intra)		1/30. ab172730 - Rabbit monoclonal IgG, is suitable for use as an isotype control with this antibody.
WB		1/10000 - 1/50000. Detects a band of approximately 60 kDa (predicted molecular weight: 53 kDa).
ICC/IF		1/50.

Application notes Is unsuitable for IP.

Target

Function	Effector protein for Rho-type GTPases, providing a link with the Arp2/3 complex that regulates the structure and dynamics of the actin cytoskeleton. Important for efficient actin polymerization. Possible regulator of lymphocyte and platelet function.
Tissue specificity	Expressed predominantly in the thymus. Also found, to a much lesser extent, in the spleen.
Involvement in disease	Defects in WAS are the cause of Wiskott-Aldrich syndrome (WAS) [MIM:301000]; also known as eczema-thrombocytopenia-immunodeficiency syndrome. WAS is an X-linked recessive immunodeficiency characterized by eczema, thrombocytopenia, recurrent infections, and bloody diarrhea. Death usually occurs before age 10. Defects in WAS are the cause of thrombocytopenia type 1 (THC1) [MIM:313900]. Thrombocytopenia is defined by a decrease in the number of platelets in circulating blood, resulting in the potential for increased bleeding and decreased ability for clotting. Defects in WAS are a cause of neutropenia severe congenital X-linked (XLN) [MIM:300299]. XLN is an immunodeficiency syndrome characterized by recurrent major bacterial infections, severe congenital neutropenia, and monocytopenia.
Sequence similarities	Contains 1 CRIB domain. Contains 1 WH1 domain. Contains 1 WH2 domain.
Domain	The WH1 (Wasp homology 1) domain may bind a Pro-rich ligand. The CRIB (Cdc42/Rac-interactive-binding) region binds to the C-terminal WH2 domain in the autoinhibited state of the protein. Binding of Rho-type GTPases to the CRIB induces a conformation change and leads to activation.
Cellular localization	Cytoplasm > cytoskeleton.

Images



Western blot - Anti-WASP/Wiskott-Aldrich syndrome protein antibody [EP2541Y] (ab75830)

All lanes : Anti-WASP/Wiskott-Aldrich syndrome protein antibody [EP2541Y] (ab75830) at 1/10000 dilution (Purified)

Lane 1 : TF-1 (Human Erythroleukemia erythroblast) whole cell lysate

Lane 2 : U-937 (Human histiocytic lymphoma monocyte) whole cell lysate

Lysates/proteins at 15 µg per lane.

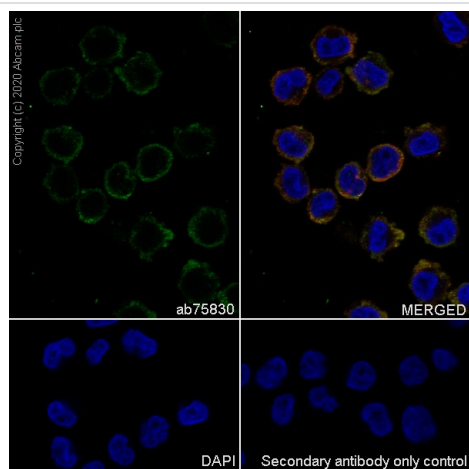
Secondary

All lanes : Goat Anti-Rabbit IgG H&L (HRP) ([ab97051](#)) at 1/20000 dilution

Predicted band size: 53 kDa

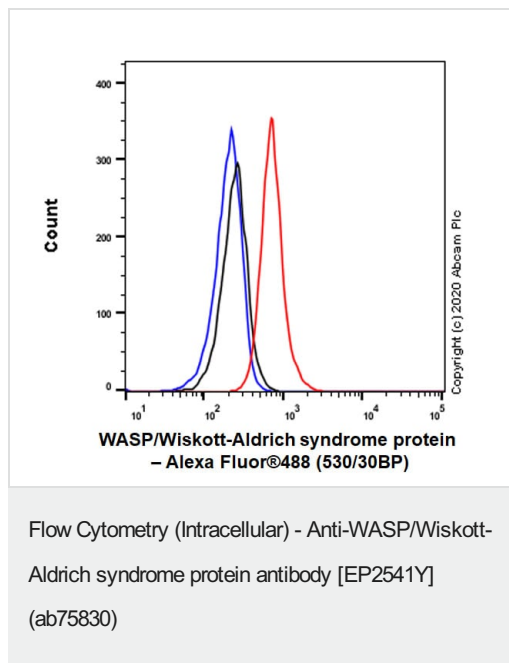
Observed band size: 60 kDa

Blocking buffer: 5% NFDM/TBST



Immunocytochemistry/ Immunofluorescence - Anti-WASP/Wiskott-Aldrich syndrome protein antibody [EP2541Y] (ab75830)

Immunocytochemistry analysis of TF-1 (Human bone marrow erythroblast) cells labeling WASP/Wiskott-Aldrich syndrome protein with Purified ab75830 at 1/50 dilution (5.88 µg/ml). Cells were fixed in 4% Paraformaldehyde and permeabilized with 0.1% tritonX-100. Cells were counterstained with Ab195889 Anti-alpha Tubulin antibody [DM1A] - Microtubule Marker (Alexa Fluor® 594) 1/200 (2.5 µg/ml). Goat anti rabbit IgG (Alexa Fluor® 488, [ab150077](#)) was used as the secondary antibody at 1/1000 (2 µg/ml) dilution. DAPI (blue) was used as nuclear counterstain. PBS instead of the primary antibody was used as the secondary antibody only control.



Intracellular Flow Cytometry analysis of U-937 (Human histiocytic lymphoma monocyte) cells labeling WASP/Wiskott-Aldrich syndrome protein with Purified ab75830 at 1/30 dilution (10 µg/ml) (Red). Cells were fixed with 4% Paraformaldehyde and permeabilised with 90% Methanol. A Goat anti rabbit IgG (Alexa Fluor® 488, **ab150077**) secondary antibody was used at 1/2000 dilution. Isotype control - Rabbit monoclonal IgG (Black). Unlabeled control - Cell without incubation with primary antibody and secondary antibody (Blue).

Please note: All products are "FOR RESEARCH USE ONLY. NOT FOR USE IN DIAGNOSTIC PROCEDURES"

Our Abpromise to you: Quality guaranteed and expert technical support

- Replacement or refund for products not performing as stated on the datasheet
- Valid for 12 months from date of delivery
- Response to your inquiry within 24 hours
- We provide support in Chinese, English, French, German, Japanese and Spanish
- Extensive multi-media technical resources to help you
- We investigate all quality concerns to ensure our products perform to the highest standards

If the product does not perform as described on this datasheet, we will offer a refund or replacement. For full details of the Abpromise, please visit <https://www.abcam.com/abpromise> or contact our technical team.

Terms and conditions

- Guarantee only valid for products bought direct from Abcam or one of our authorized distributors