

Product datasheet

Anti-Wee1 antibody ab137377

[1 Abreviews](#) [8 References](#) [2 Images](#)

Overview

Product name	Anti-Wee1 antibody
Description	Rabbit polyclonal to Wee1
Host species	Rabbit
Tested applications	Suitable for: WB, IHC-P
Species reactivity	Reacts with: Human
Immunogen	Recombinant fragment, corresponding to a region within internal amino acids 274 and 506 of Human Wee1.
Positive control	WB: Jurkat, Raji, NCI-H929 whole cell lysate. IHC:CL1-0 xenograft tissue.
General notes	<p>The Life Science industry has been in the grips of a reproducibility crisis for a number of years. Abcam is leading the way in addressing this with our range of recombinant monoclonal antibodies and knockout edited cell lines for gold-standard validation. Please check that this product meets your needs before purchasing.</p> <p>If you have any questions, special requirements or concerns, please send us an inquiry and/or contact our Support team ahead of purchase. Recommended alternatives for this product can be found below, along with publications, customer reviews and Q&As</p>

Properties

Form	Liquid
Storage instructions	Shipped at 4°C. Store at +4°C short term (1-2 weeks). Upon delivery aliquot. Store at -20°C. Avoid freeze / thaw cycle.
Storage buffer	pH: 7.00 Preservative: 0.025% Proclin 300 Constituents: 79% PBS, 20% Glycerol (glycerin, glycerine)
Purity	Immunogen affinity purified
Clonality	Polyclonal
Isotype	IgG

Applications

The Abpromise guarantee

Our **Abpromise guarantee** covers the use of ab137377 in the following tested applications.

The application notes include recommended starting dilutions; optimal dilutions/concentrations should be determined by the end user.

Application	Abreviews	Notes
WB		1/500 - 1/3000. Predicted molecular weight: 72 kDa.
IHC-P		1/100 - 1/1000. Perform heat mediated antigen retrieval with citrate buffer pH 6 before commencing with IHC staining protocol. Alternatively antigen retrieval using heat mediated Tris/EDTA buffer (pH 8.0) may be used.

Target

Function

Acts as a negative regulator of entry into mitosis (G2 to M transition) by protecting the nucleus from cytoplasmically activated cyclin B1-complexed CDK1 before the onset of mitosis by mediating phosphorylation of CDK1 on 'Tyr-15'. Specifically phosphorylates and inactivates cyclin B1-complexed CDK1 reaching a maximum during G2 phase and a minimum as cells enter M phase. Phosphorylation of cyclin B1-CDK1 occurs exclusively on 'Tyr-15' and phosphorylation of monomeric CDK1 does not occur. Its activity increases during S and G2 phases and decreases at M phase when it is hyperphosphorylated. A correlated decrease in protein level occurs at M/G1 phase, probably due to its degradation.

Sequence similarities

Belongs to the protein kinase superfamily. Ser/Thr protein kinase family. WEE1 subfamily. Contains 1 protein kinase domain.

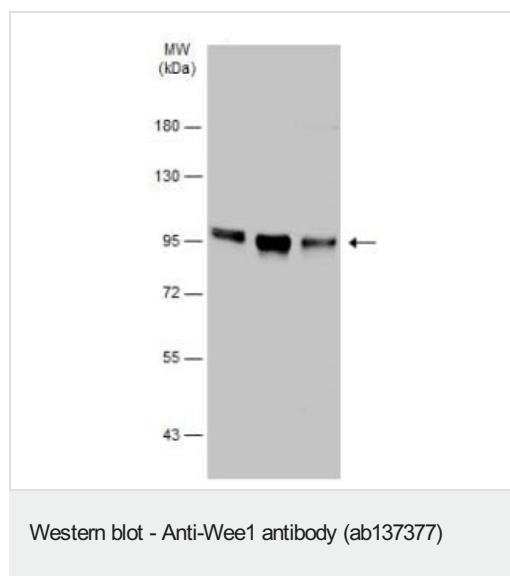
Post-translational modifications

Phosphorylated during M and G1 phases. Also autophosphorylated. Ubiquitinated and degraded at the onset of G2/M phase.

Cellular localization

Nucleus.

Images



All lanes : Anti-Wee1 antibody (ab137377) at 1/1000 dilution

Lane 1 : Jurkat (human T cell leukemia cell line from peripheral blood) whole cell lysate

Lane 2 : Raji (human Burkitt's lymphoma cell line) whole cell lysate

Lane 3 : NCI-H929 (human bone marrow lymphoblast cell line) whole cell lysate

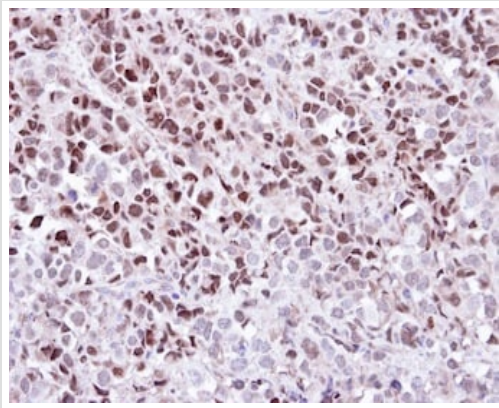
Lysates/proteins at 30 µg per lane.

Secondary

All lanes : HRP-conjugated anti-rabbit IgG antibody

Predicted band size: 72 kDa

7.5% SDS-PAGE



Immunohistochemistry (Formalin/PFA-fixed paraffin-embedded sections) - Anti-Wee1 antibody (ab137377)

Immunohistochemical analysis of paraffin embedded CL1-0 (Lung adenocarcinoma) xenograft tissue stained Wee1 using ab137377 at 1/100 dilution.

Antigen Retrieval: EDTA based buffer, pH 8.0, 15min.

Please note: All products are "FOR RESEARCH USE ONLY. NOT FOR USE IN DIAGNOSTIC PROCEDURES"

Our Abpromise to you: Quality guaranteed and expert technical support

- Replacement or refund for products not performing as stated on the datasheet
- Valid for 12 months from date of delivery
- Response to your inquiry within 24 hours
- We provide support in Chinese, English, French, German, Japanese and Spanish
- Extensive multi-media technical resources to help you
- We investigate all quality concerns to ensure our products perform to the highest standards

If the product does not perform as described on this datasheet, we will offer a refund or replacement. For full details of the Abpromise, please visit <https://www.abcam.com/abpromise> or contact our technical team.

Terms and conditions

- Guarantee only valid for products bought direct from Abcam or one of our authorized distributors