




## Product datasheet

### Anti-WFS1 antibody ab176909

[1 References](#) [1 Image](#)

#### Overview

<b>Product name</b>	Anti-WFS1 antibody
<b>Description</b>	Rabbit polyclonal to WFS1
<b>Host species</b>	Rabbit
<b>Tested applications</b>	<b>Suitable for:</b> WB
<b>Species reactivity</b>	<b>Reacts with:</b> Human <b>Predicted to work with:</b> Mouse 
<b>Immunogen</b>	Recombinant fragment corresponding to Human WFS1 aa 76-282. BC030130. Sequence:  GTGPTKGDMEIPFEEVLERAKAGDPKAQTEVGKHYLQLA GDTDEELNSCT AVDWLVLAQKQGRREAVKLLRRCLADRRGITSENEREVR QLSSETDLERA VRKAALVMYWKLNPKKKKQVAVAELENVGVNEHDGG AQPGVPKSLQK QRRMLERLVSSESKNYALDDFVEITKKYAKGVIPSSLFLQ DDEDDDELA GKSPEDL  Database link: <a href="#">O76024</a>   <a href="#">Run BLAST with</a>  <a href="#">Run BLAST with</a>
<b>Positive control</b>	Human fetal heart and Human fetal muscle lysates.
<b>General notes</b>	<p>The Life Science industry has been in the grips of a reproducibility crisis for a number of years. Abcam is leading the way in addressing this with our range of recombinant monoclonal antibodies and knockout edited cell lines for gold-standard validation. Please check that this product meets your needs before purchasing.</p> <p>If you have any questions, special requirements or concerns, please send us an inquiry and/or contact our Support team ahead of purchase. Recommended alternatives for this product can be found below, along with publications, customer reviews and Q&amp;As</p>

#### Properties

<b>Form</b>	Lyophilized:Reconstitute in 200ul sterile H2O.
<b>Storage instructions</b>	Shipped at 4°C. Store at +4°C short term (1-2 weeks). Upon delivery aliquot. Store at -20°C long

	term. Avoid freeze / thaw cycle.
<b>Storage buffer</b>	pH: 7.20 Preservative: 0.02% Sodium azide Constituents: 98% PBS, 1% BSA
<b>Purity</b>	Immunogen affinity purified
<b>Clonality</b>	Polyclonal
<b>Isotype</b>	IgG

## Applications

**The Abpromise guarantee** Our **Abpromise guarantee** covers the use of ab176909 in the following tested applications. The application notes include recommended starting dilutions; optimal dilutions/concentrations should be determined by the end user.

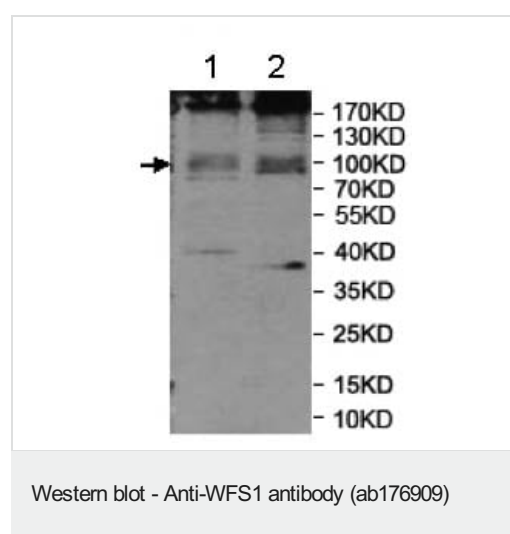
Application	Abreviews	Notes
<b>WB</b>		1/200 - 1/1000. Detects a band of approximately 100 kDa (predicted molecular weight: 100 kDa).

## Target

**Relevance** WFS1 is a novel component of Wolfram syndrome, a rare form of juvenile diabetes. WFS1 plays an important role in maintaining homeostasis of the endoplasmic reticulum (ER) in the pancreas. It is normally up-regulated during insulin secretion, whereas inactivation of the protein can cause ER stress. Chronic ER stress is a major involvement in Wolfram syndrome.

**Cellular localization** Endoplasmic reticulum; endoplasmic reticulum membrane; multipass membrane protein

## Images



**All lanes :** Anti-WFS1 antibody (ab176909) at 1/500 dilution

**Lane 1 :** Human fetal heart lysate

**Lane 2 :** Human fetal muscle lysate

**Predicted band size:** 100 kDa

**Please note:** All products are "FOR RESEARCH USE ONLY. NOT FOR USE IN DIAGNOSTIC PROCEDURES"

### **Our Abpromise to you: Quality guaranteed and expert technical support**

---

- Replacement or refund for products not performing as stated on the datasheet
- Valid for 12 months from date of delivery
- Response to your inquiry within 24 hours
  
- We provide support in Chinese, English, French, German, Japanese and Spanish
- Extensive multi-media technical resources to help you
- We investigate all quality concerns to ensure our products perform to the highest standards

If the product does not perform as described on this datasheet, we will offer a refund or replacement. For full details of the Abpromise, please visit [\*\*https://www.abcam.com/abpromise\*\*](https://www.abcam.com/abpromise) or contact our technical team.

### **Terms and conditions**

---

- Guarantee only valid for products bought direct from Abcam or one of our authorized distributors