

## Product datasheet

### Anti-WNK3 antibody ab187503

1 Image

#### Overview

<b>Product name</b>	Anti-WNK3 antibody
<b>Description</b>	Rabbit polyclonal to WNK3
<b>Host species</b>	Rabbit
<b>Tested applications</b>	<b>Suitable for:</b> WB
<b>Species reactivity</b>	<b>Reacts with:</b> Rat
<b>Immunogen</b>	Recombinant fragment corresponding to Human WNK3 aa 1038-1357. Database link: <a href="#">Q9BYP7</a>
<b>General notes</b>	<p>The Life Science industry has been in the grips of a reproducibility crisis for a number of years. Abcam is leading the way in addressing this with our range of recombinant monoclonal antibodies and knockout edited cell lines for gold-standard validation. Please check that this product meets your needs before purchasing.</p> <p>If you have any questions, special requirements or concerns, please send us an inquiry and/or contact our Support team ahead of purchase. Recommended alternatives for this product can be found below, along with publications, customer reviews and Q&amp;As</p>

#### Properties

<b>Form</b>	Liquid
<b>Storage instructions</b>	Shipped at 4°C. Store at +4°C short term (1-2 weeks). Upon delivery aliquot. Store at -20°C long term. Avoid freeze / thaw cycle.
<b>Storage buffer</b>	pH: 7.30 Preservative: 0.02% Sodium azide Constituents: 50% Glycerol, 49% PBS
<b>Purity</b>	Immunogen affinity purified
<b>Clonality</b>	Polyclonal
<b>Isotype</b>	IgG

#### Applications

**The Abpromise guarantee** Our **Abpromise guarantee** covers the use of ab187503 in the following tested applications.

The application notes include recommended starting dilutions; optimal dilutions/concentrations should be determined by the end user.

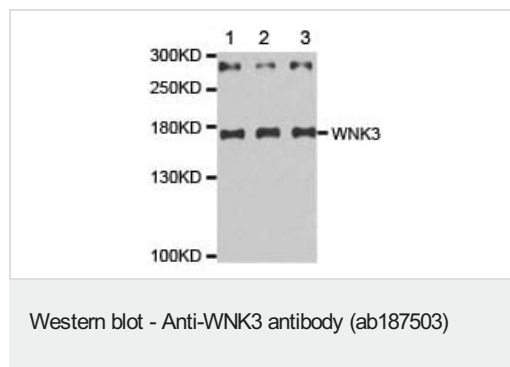
Application	Abreviews	Notes
WB		1/500 - 1/2000. Predicted molecular weight: 198 kDa.

## Target

**Tissue specificity** Expressed in brain, lung, kidney, liver and pancreas, and in fetal tissues including placenta, fetal brain, lung and kidney. Very low levels of expression were also detected in fetal heart, thymus, liver and spleen.

**Sequence similarities** Belongs to the protein kinase superfamily. Ser/Thr protein kinase family. WNK subfamily. Contains 1 protein kinase domain.

## Images



**All lanes :** Anti-WNK3 antibody (ab187503) at 1/500 dilution

**Lane 1 :** Rat hypothalamus extract

**Lane 2 :** Rat CNS extract

**Lane 3 :** Rat brain extract

**Predicted band size:** 198 kDa

**Please note:** All products are "FOR RESEARCH USE ONLY. NOT FOR USE IN DIAGNOSTIC PROCEDURES"

## Our Abpromise to you: Quality guaranteed and expert technical support

- Replacement or refund for products not performing as stated on the datasheet
- Valid for 12 months from date of delivery
- Response to your inquiry within 24 hours
- We provide support in Chinese, English, French, German, Japanese and Spanish
- Extensive multi-media technical resources to help you
- We investigate all quality concerns to ensure our products perform to the highest standards

If the product does not perform as described on this datasheet, we will offer a refund or replacement. For full details of the Abpromise, please visit <https://www.abcam.com/abpromise> or contact our technical team.

## Terms and conditions

- Guarantee only valid for products bought direct from Abcam or one of our authorized distributors