

Product datasheet

Anti-WNK4 antibody ab126477

[1 References](#) [1 Image](#)

Overview

Product name	Anti-WNK4 antibody
Description	Rabbit polyclonal to WNK4
Host species	Rabbit
Tested applications	Suitable for: IHC-P
Species reactivity	Reacts with: Human
Immunogen	antigen sequence corresponding to amino acids 1005-1138 of Human WNK4.
Positive control	Human kidney tissue.
General notes	<p>The Life Science industry has been in the grips of a reproducibility crisis for a number of years. Abcam is leading the way in addressing this with our range of recombinant monoclonal antibodies and knockout edited cell lines for gold-standard validation. Please check that this product meets your needs before purchasing.</p> <p>If you have any questions, special requirements or concerns, please send us an inquiry and/or contact our Support team ahead of purchase. Recommended alternatives for this product can be found below, along with publications, customer reviews and Q&As</p>

Properties

Form	Liquid
Storage instructions	Shipped at 4°C. Upon delivery aliquot and store at -20°C. Avoid freeze / thaw cycles.
Storage buffer	<p>pH: 7.20</p> <p>Preservative: 0.02% Sodium azide</p> <p>Constituents: 59% PBS, 40% Glycerol (glycerin, glycerine)</p>
Purity	Immunogen affinity purified
Clonality	Polyclonal
Isotype	IgG

Applications

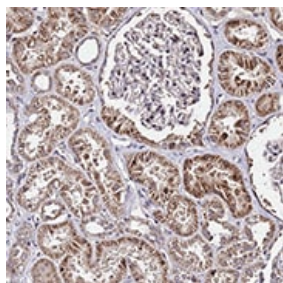
The Abpromise guarantee Our **Abpromise guarantee** covers the use of ab126477 in the following tested applications. The application notes include recommended starting dilutions; optimal dilutions/concentrations should be determined by the end user.

Application	Abreviews	Notes
IHC-P		1/20 - 1/50. Perform heat mediated antigen retrieval with citrate buffer pH 6 before commencing with IHC staining protocol.

Target

Function	Serine/threonine kinase which plays an important role in the regulation of electrolyte homeostasis, cell signaling, survival and proliferation. Acts as an activator and inhibitor of sodium-coupled chloride cotransporters and potassium-coupled chloride cotransporters respectively. Activates SCNN1A, SCNN1B, SCNN1D, SGK1, TRPV5 and TRPV6. Regulates the activity of the thiazide-sensitive Na-Cl cotransporter, SLC12A3, by phosphorylation which appears to prevent membrane trafficking of SLC12A3. Also inhibits the renal K(+) channel, KCNJ1, via a kinase-independent mechanism by which it induces clearance of the protein from the cell surface by clathrin-dependent endocytosis. WNK4 appears to act as a molecular switch that can vary the balance between NaCl reabsorption and K(+) secretion to maintain integrated homeostasis. Phosphorylates NEDD4L. Acts as a scaffold to inhibit SLC4A4 as well as CFTR activities and surface expression, recruits STK39 which mediates the inhibition.
Tissue specificity	Expressed in kidney, colon and skin.
Involvement in disease	Pseudohypoaldosteronism 2B
Sequence similarities	Belongs to the protein kinase superfamily. Ser/Thr protein kinase family. WNK subfamily. Contains 1 protein kinase domain.
Post-translational modifications	Phosphorylated by WNK1 and WNK3. Ubiquitinated by the BCR(KLHL3) complex, leading to its degradation and increased expression of KCNJ1 at the cell surface. Ubiquitinated by the BCR(KLHL2) complex.
Cellular localization	Cell junction, tight junction. Present exclusively in intercellular junctions in the distal convoluted tubule and in both the cytoplasm and intercellular junctions in the cortical collecting duct. WNK4 is part of the tight junction complex (By similarity).

Images



ab126477, at 1/20 dilution, staining WNK4 in paraffin-embedded Human kidney tissue by Immunohistochemistry.

Immunohistochemistry (Formalin/PFA-fixed paraffin-embedded sections) - Anti-WNK4 antibody (ab126477)

Please note: All products are "FOR RESEARCH USE ONLY. NOT FOR USE IN DIAGNOSTIC PROCEDURES"

Our Abpromise to you: Quality guaranteed and expert technical support

- Replacement or refund for products not performing as stated on the datasheet
- Valid for 12 months from date of delivery
- Response to your inquiry within 24 hours

- We provide support in Chinese, English, French, German, Japanese and Spanish
- Extensive multi-media technical resources to help you
- We investigate all quality concerns to ensure our products perform to the highest standards

If the product does not perform as described on this datasheet, we will offer a refund or replacement. For full details of the Abpromise, please visit <https://www.abcam.com/abpromise> or contact our technical team.

Terms and conditions

- Guarantee only valid for products bought direct from Abcam or one of our authorized distributors