


Product datasheet

Anti-Wnt6 antibody ab150588

[3 References](#) [1 Image](#)

Overview

Product name	Anti-Wnt6 antibody
Description	Rabbit polyclonal to Wnt6
Host species	Rabbit
Specificity	BLAST analysis of the peptide immunogen showed no homology with other Human proteins.
Tested applications	Suitable for: IHC-P
Species reactivity	Reacts with: Human Predicted to work with: Mouse, Rat, Rabbit, Horse, Hamster, Cow, Dog, Monkey, Gorilla, Opossum, Common marmoset 
Immunogen	Synthetic peptide, corresponding to 18 amino acids from an internal region of Human Wnt6 (NP_006513.1).
Positive control	Human breast (epithelium cell) tissue.
General notes	<p>The Life Science industry has been in the grips of a reproducibility crisis for a number of years. Abcam is leading the way in addressing this with our range of recombinant monoclonal antibodies and knockout edited cell lines for gold-standard validation. Please check that this product meets your needs before purchasing.</p> <p>If you have any questions, special requirements or concerns, please send us an inquiry and/or contact our Support team ahead of purchase. Recommended alternatives for this product can be found below, along with publications, customer reviews and Q&As</p>

Properties

Form	Liquid
Storage instructions	Shipped at 4°C. Store at -20°C. Avoid freeze / thaw cycle. Stable for 12 months at -20°C.
Storage buffer	pH: 7.4 Preservative: 0.1% Sodium azide Constituent: 99% PBS
Purity	Immunogen affinity purified
Clonality	Polyclonal
Isotype	IgG

Applications

The Abpromise guarantee Our **Abpromise guarantee** covers the use of ab150588 in the following tested applications. The application notes include recommended starting dilutions; optimal dilutions/concentrations should be determined by the end user.

Application	Abreviews	Notes
IHC-P		Use a concentration of 20 µg/ml. Perform heat mediated antigen retrieval before commencing with IHC staining protocol.

Target

Function

Ligand for members of the frizzled family of seven transmembrane receptors. Probable developmental protein. May be a signaling molecule which affects the development of discrete regions of tissues. Is likely to signal over only few cell diameters.

Sequence similarities

Belongs to the Wnt family.

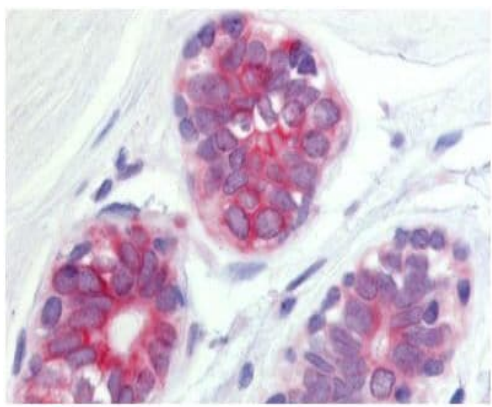
Post-translational modifications

Palmitoylation at Ser-228 is required for efficient binding to frizzled receptors. It is also required for subsequent palmitoylation at Cys-76. Palmitoylation is necessary for proper trafficking to cell surface.

Cellular localization

Secreted > extracellular space > extracellular matrix.

Images



Immunohistochemical analysis of formalin-fixed, paraffin-embedded Human breast (epithelial cell) tissue labeling Wnt6 with ab150588 at 20 µg/ml.

Immunohistochemistry (Formalin/PFA-fixed paraffin-embedded sections) - Anti-Wnt6 antibody (ab150588)

Please note: All products are "FOR RESEARCH USE ONLY. NOT FOR USE IN DIAGNOSTIC PROCEDURES"

Our Abpromise to you: Quality guaranteed and expert technical support

- Replacement or refund for products not performing as stated on the datasheet
- Valid for 12 months from date of delivery

- Response to your inquiry within 24 hours
- We provide support in Chinese, English, French, German, Japanese and Spanish
- Extensive multi-media technical resources to help you
- We investigate all quality concerns to ensure our products perform to the highest standards

If the product does not perform as described on this datasheet, we will offer a refund or replacement. For full details of the Abpromise, please visit <https://www.abcam.com/abpromise> or contact our technical team.

Terms and conditions

- Guarantee only valid for products bought direct from Abcam or one of our authorized distributors