


Product datasheet

Anti-XPA antibody ab85914

★★★★★ [1 Abreviews](#) [8 References](#) [3 Images](#)

Overview

Product name	Anti-XPA antibody
Description	Rabbit polyclonal to XPA
Host species	Rabbit
Tested applications	Suitable for: WB, IP, IHC-P
Species reactivity	Reacts with: Human Predicted to work with: Rhesus monkey, Gorilla, Elephant 
Immunogen	Synthetic peptide, corresponding to a region between residues 1 and 50 of Human XPA (NP_000371.1)
General notes	<p>The Life Science industry has been in the grips of a reproducibility crisis for a number of years. Abcam is leading the way in addressing this with our range of recombinant monoclonal antibodies and knockout edited cell lines for gold-standard validation. Please check that this product meets your needs before purchasing.</p> <p>If you have any questions, special requirements or concerns, please send us an inquiry and/or contact our Support team ahead of purchase. Recommended alternatives for this product can be found below, along with publications, customer reviews and Q&As</p>

Properties

Form	Liquid
Storage instructions	Shipped at 4°C. Upon delivery aliquot and store at -20°C. Avoid freeze / thaw cycles.
Storage buffer	pH: 6.8 Preservative: 0.09% Sodium azide Constituents: Tris buffered saline, 0.1% BSA
Purity	Immunogen affinity purified
Purification notes	ab85914 was affinity purified using an epitope specific to XPA immobilized on solid support.
Clonality	Polyclonal
Isotype	IgG

Applications

The Abpromise guarantee

Our **Abpromise guarantee** covers the use of ab85914 in the following tested applications.

The application notes include recommended starting dilutions; optimal dilutions/concentrations should be determined by the end user.

Application	Abreviews	Notes
WB	★★★★★ (1)	1/2000 - 1/10000. Detects a band of approximately 39 kDa (predicted molecular weight: 31 kDa).
IP		Use at 2-5 µg/mg of lysate.
IHC-P		1/200 - 1/1000. Perform heat mediated antigen retrieval with citrate buffer pH 6 before commencing with IHC staining protocol.

Target

Function

Involved in DNA excision repair. Initiates repair by binding to damaged sites with various affinities, depending on the photoproduct and the transcriptional state of the region. Required for UV-induced CHK1 phosphorylation and the recruitment of CEP164 to cyclobutane pyrimidine dimmers (CPD), sites of DNA damage after UV irradiation.

Tissue specificity

Expressed in various cell lines and in skin fibroblasts.

Involvement in disease

Defects in XPA are a cause of xeroderma pigmentosum complementation group A (XP-A) [MIM:278700]; also known as xeroderma pigmentosum type 1 (XP1). XP-A is a rare human autosomal recessive disease characterized by solar sensitivity, high predisposition for developing cancers on areas exposed to sunlight and, in some cases, neurological abnormalities. Group A patients show the most severe skin symptoms and progressive neurological disorders.

Sequence similarities

Belongs to the XPA family.

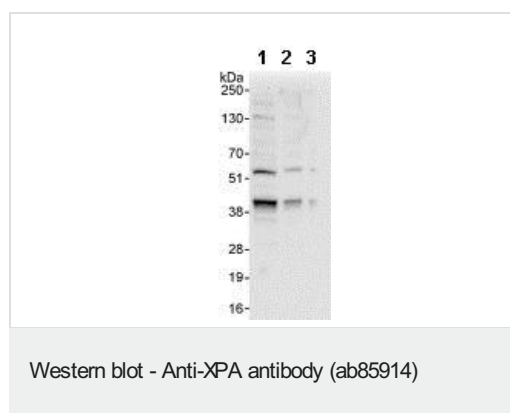
Post-translational modifications

Phosphorylated upon DNA damage, probably by ATM or ATR.
Ubiquitinated by HERC2 leading to degradation by the proteasome.

Cellular localization

Nucleus.

Images



All lanes : Anti-XPA antibody (ab85914) at 0.04 µg/ml

Lane 1 : HeLa whole cell lysate at 50 µg

Lane 2 : HeLa whole cell lysate at 15 µg

Lane 3 : HeLa whole cell lysate at 5 µg

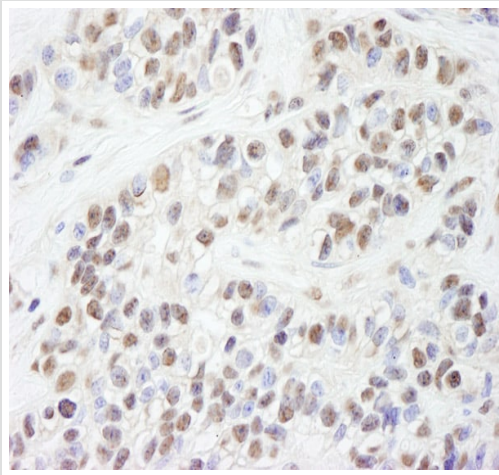
Predicted band size: 31 kDa

Observed band size: 39 kDa

Additional bands at: 55 kDa. We are unsure as to the identity of these extra bands.

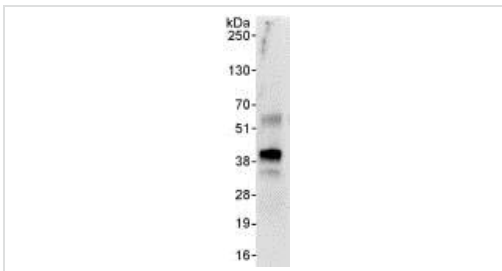
Exposure time: 30 seconds

Detection: Chemiluminescence with exposure time of 30 seconds



Immunohistochemistry (Formalin/PFA-fixed paraffin-embedded sections) - Anti-XPA antibody (ab85914)

Immunohistochemistry (Formalin/PFA-fixed paraffin-embedded sections) analysis of human breast carcinoma tissue labelling XPA with ab85914 at 1/1000 (0.2µg/ml). Detection: DAB.



Immunoprecipitation - Anti-XPA antibody (ab85914)

Detection of XPA by Western Blot of Immunoprecipitate.
ab85914 at 0.1µg/ml staining XPA in HeLa whole cell lysate immunoprecipitated using ab85914 at 3µg/mg lysate (1 mg/IP; 20% of IP loaded/lane).

Detection: Chemiluminescence with exposure time of 30 seconds.

Please note: All products are "FOR RESEARCH USE ONLY. NOT FOR USE IN DIAGNOSTIC PROCEDURES"

Our Abpromise to you: Quality guaranteed and expert technical support

- Replacement or refund for products not performing as stated on the datasheet
- Valid for 12 months from date of delivery
- Response to your inquiry within 24 hours
- We provide support in Chinese, English, French, German, Japanese and Spanish
- Extensive multi-media technical resources to help you
- We investigate all quality concerns to ensure our products perform to the highest standards

If the product does not perform as described on this datasheet, we will offer a refund or replacement. For full details of the Abpromise, please visit <https://www.abcam.com/abpromise> or contact our technical team.

Terms and conditions

- Guarantee only valid for products bought direct from Abcam or one of our authorized distributors