


Product datasheet

Anti-YKL-40/CHI3L1 antibody ab180569

★★★★★ [1 Abreviews](#) [14 References](#) [4 Images](#)

Overview

Product name	Anti-YKL-40/CHI3L1 antibody
Description	Rabbit polyclonal to YKL-40/CHI3L1
Host species	Rabbit
Tested applications	Suitable for: ICC/IF, WB, IHC-P
Species reactivity	Reacts with: Mouse, Human Predicted to work with: Pig, Orangutan 
Immunogen	Recombinant full length protein within Human YKL-40/CHI3L1 aa 22-240. The exact sequence is proprietary. Sequence: MGVKASQTGFVVLVLLQCCSAYKLVCYTWSQYREGDG SCFPDALDRFL CTHIYSFANISNDHIDTWEWNDVTLYGMLNTLKNRPNLKT LLSVGGWN FGSQRFKIASNTQSRRTFIKSVPPFLRTHGFDGLDLAWLY PGRRDKQHF TTLIKEMKAEFIKEAQP GKKQLLSAALSAGKVTIDSSYDIA KISQHLD F ISIMTYDFHGAWRGTTGHHSP LFRGQEDASPDRFSNTDYA VGYMLRLGAP ASKLVMGIPTFGRSFTLASSETGVGAPISGPGIPGRFTKEA GTLAYYEIC DFLRGATVHRILGQQVPYATKGNQWVG YDDQESVKSKVQ YLKDRQLAGAM VWALDLDDFQGSFCGQDLRFPLTNAIKDALAAT

Database link: [P36222](#)

 [Run BLAST with](#)

 [Run BLAST with](#)

Positive control WB: MCF-7 and HT-29 cell lysates; IHC: Mouse spleen and liver tissues; ICC/ IF: Raw264.7 cells.

General notes The Life Science industry has been in the grips of a reproducibility crisis for a number of years. Abcam is leading the way in addressing this with our range of recombinant monoclonal antibodies and knockout edited cell lines for gold-standard validation. Please check that this product meets your needs before purchasing.

If you have any questions, special requirements or concerns, please send us an inquiry and/or

contact our Support team ahead of purchase. Recommended alternatives for this product can be found below, along with publications, customer reviews and Q&As

Properties

Form	Liquid
Storage instructions	Shipped at 4°C. Store at +4°C short term (1-2 weeks). Upon delivery aliquot. Store at -20°C long term. Avoid freeze / thaw cycle.
Storage buffer	pH: 7.30 Preservative: 0.02% Sodium azide Constituents: 49% PBS, 50% Glycerol
Purity	Immunogen affinity purified
Clonality	Polyclonal
Isotype	IgG

Applications

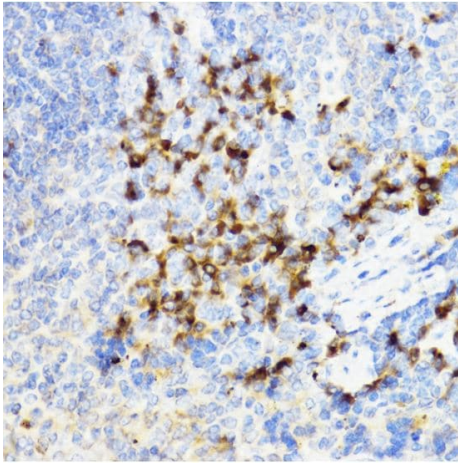
The Abpromise guarantee Our **Abpromise guarantee** covers the use of ab180569 in the following tested applications. The application notes include recommended starting dilutions; optimal dilutions/concentrations should be determined by the end user.

Application	Abreviews	Notes
ICC/IF		1/50 - 1/200.
WB		1/500 - 1/2000. Predicted molecular weight: 43 kDa.
IHC-P	★★★★★ (1)	1/50 - 1/200. ab171870 - Rabbit polyclonal IgG, is suitable for use as an isotype control with this antibody.

Target

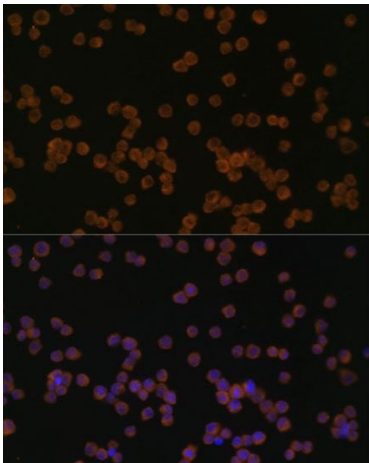
Function	Carbohydrate-binding lectin with a preference for chitin. May play a role in defense against pathogens, or in tissue remodeling. May play an important role in the capacity of cells to respond to and cope with changes in their environment.
Tissue specificity	Present in activated macrophages, articular chondrocytes, synovial cells as well as in liver. Undetectable in muscle tissues, lung, pancreas, mononuclear cells, or fibroblasts.
Involvement in disease	A genetic variation in CHI3L1 is associated with susceptibility to asthma-related traits type 7 (ASRT7) [MIM:611960]. Asthma-related traits include clinical symptoms of asthma, such as coughing, wheezing and dyspnea, bronchial hyperresponsiveness (BHR) as assessed by methacholine challenge test, serum IgE levels, atopy, and atopic dermatitis.
Sequence similarities	Belongs to the glycosyl hydrolase 18 family.
Post-translational modifications	Glycosylated.
Cellular localization	Secreted > extracellular space.

Images



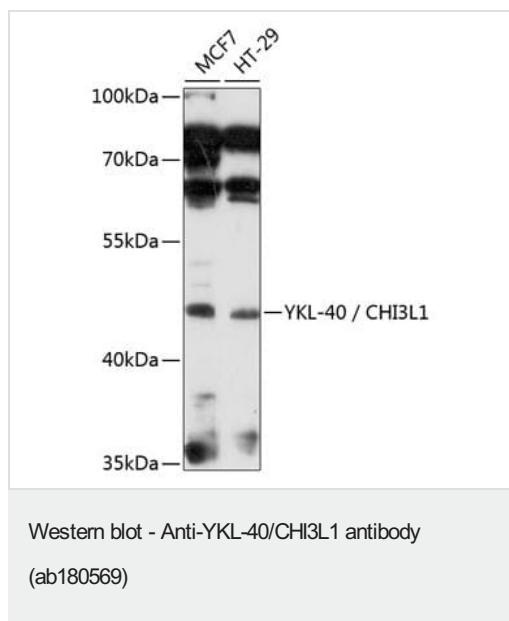
Paraffin-embedded mouse spleen tissue stained for YKL-40 using ab180569 at 1/100 dilution in immunohistochemical analysis.

Immunohistochemistry (Formalin/PFA-fixed paraffin-embedded sections) - Anti-YKL-40/CHI3L1 antibody (ab180569)



Immunofluorescence staining of Raw264.7 cells stained for YKL-40 with ab180569 at 1/100 dilution. Nuclei are labeled with DAPI (Blue).

Immunocytochemistry/ Immunofluorescence - Anti-YKL-40/CHI3L1 antibody (ab180569)



All lanes : Anti-YKL-40/CHI3L1 antibody (ab180569) at 1/1000 dilution

Lane 1 : MCF-7 cell lysate

Lane 2 : HT-29 cell lysate

Lysates/proteins at 25 µg per lane.

Secondary

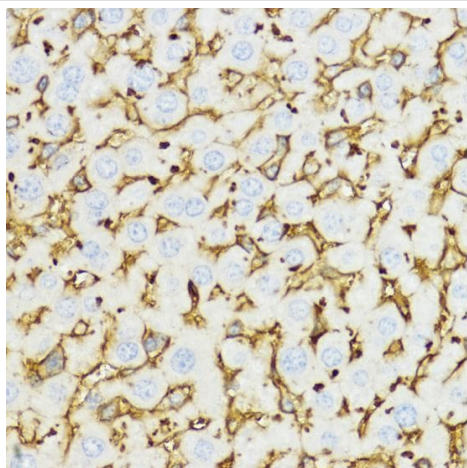
All lanes : HRP Goat AntiRabbit IgG (H+L)

Developed using the ECL technique.

Predicted band size: 43 kDa

Exposure time: 30 seconds

Blocking buffer: 3% nonfat dry milk in TBST.



Paraffin-embedded mouse liver tissue stained for YKL-40 using ab180569 at 1/100 dilution in immunohistochemical analysis.

Immunohistochemistry (Formalin/PFA-fixed paraffin-embedded sections) - Anti-YKL-40/CHI3L1 antibody (ab180569)

Please note: All products are "FOR RESEARCH USE ONLY. NOT FOR USE IN DIAGNOSTIC PROCEDURES"

Our Abpromise to you: Quality guaranteed and expert technical support

- Replacement or refund for products not performing as stated on the datasheet
- Valid for 12 months from date of delivery
- Response to your inquiry within 24 hours
- We provide support in Chinese, English, French, German, Japanese and Spanish
- Extensive multi-media technical resources to help you
- We investigate all quality concerns to ensure our products perform to the highest standards

If the product does not perform as described on this datasheet, we will offer a refund or replacement. For full details of the Abpromise, please visit <https://www.abcam.com/abpromise> or contact our technical team.

Terms and conditions

- Guarantee only valid for products bought direct from Abcam or one of our authorized distributors