


Product datasheet

Anti-YL1 antibody ab112055

★★★★★ [1 Abreviews](#) [1 References](#) [2 Images](#)

Overview

Product name	Anti-YL1 antibody
Description	Rabbit polyclonal to YL1
Host species	Rabbit
Tested applications	Suitable for: WB, IP
Species reactivity	Reacts with: Human Predicted to work with: Mouse, Rat, Rabbit, Horse, Cow, Dog, Chimpanzee, Baboon, Rhesus monkey, Orangutan 
Immunogen	Synthetic peptide, corresponding to a region within amino acids 50-100 of Human YL1 (NP_005988.1)
Positive control	Whole cell lysate from HeLa cells.
General notes	<p>The Life Science industry has been in the grips of a reproducibility crisis for a number of years. Abcam is leading the way in addressing this with our range of recombinant monoclonal antibodies and knockout edited cell lines for gold-standard validation. Please check that this product meets your needs before purchasing.</p> <p>If you have any questions, special requirements or concerns, please send us an inquiry and/or contact our Support team ahead of purchase. Recommended alternatives for this product can be found below, along with publications, customer reviews and Q&As</p>

Properties

Form	Liquid
Storage instructions	Shipped at 4°C. Upon delivery aliquot and store at -20°C. Avoid freeze / thaw cycles.
Storage buffer	<p>pH: 7</p> <p>Preservative: 0.09% Sodium azide</p> <p>Constituent: 99% Tris citrate/phosphate</p> <p>pH 7 to 8.</p>
Purity	Immunogen affinity purified
Clonality	Polyclonal
Isotype	IgG

Applications

The Abpromise guarantee

Our **Abpromise guarantee** covers the use of ab112055 in the following tested applications.

The application notes include recommended starting dilutions; optimal dilutions/concentrations should be determined by the end user.

Application	Abreviews	Notes
WB	★★★★★ (1)	1/2000 - 1/10000. Predicted molecular weight: 41 kDa.
IP		Use at 2-10 µg/mg of lysate.

Target

Function

Could be a DNA-binding transcriptional regulator. May be involved in chromatin modification and remodeling.

Sequence similarities

Belongs to the VPS72/YL1 family.

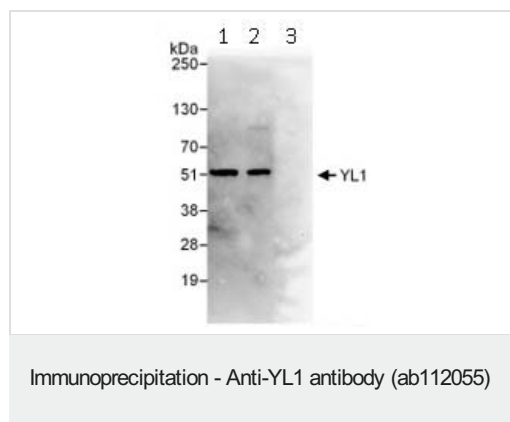
Post-translational modifications

Phosphorylated upon DNA damage, probably by ATM or ATR.

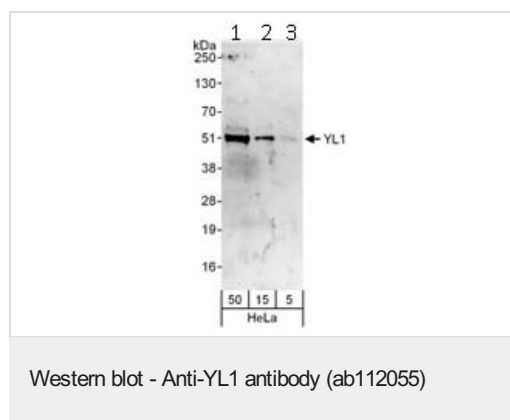
Cellular localization

Nucleus.

Images



Immunoprecipitation of YL1. Samples: 1mg of whole cell lysate from HeLa cells(20% of IP loaded). Antibodies: Affinity purified rabbit anti-YL1 antibody (ab112055) was used at 1 µg/ml. Lane 1- YL1 was also immunoprecipitated by rabbit anti-YL1 antibody (ab112055) at 6 µg/mg lysate. Lane 2- YL1 was immunoprecipitated by an rabbit anti-YL1 antibody that recognizes a downstream epitope. 3- Rabbit IgG control.Detection: Chemiluminescence with exposure time of 10 seconds.



All lanes : Anti-YL1 antibody (ab112055) at 0.1 µg/ml

Lane 1 : HeLa whole cell lysate at 50 µg

Lane 2 : HeLa whole cell lysate at 15 µg

Lane 3 : HeLa whole cell lysate at 5 µg

Predicted band size: 41 kDa

Please note: All products are "FOR RESEARCH USE ONLY. NOT FOR USE IN DIAGNOSTIC PROCEDURES"

Our Abpromise to you: Quality guaranteed and expert technical support

- Replacement or refund for products not performing as stated on the datasheet
- Valid for 12 months from date of delivery
- Response to your inquiry within 24 hours

- We provide support in Chinese, English, French, German, Japanese and Spanish
- Extensive multi-media technical resources to help you
- We investigate all quality concerns to ensure our products perform to the highest standards

If the product does not perform as described on this datasheet, we will offer a refund or replacement. For full details of the Abpromise, please visit <https://www.abcam.com/abpromise> or contact our technical team.

Terms and conditions

- Guarantee only valid for products bought direct from Abcam or one of our authorized distributors