

Product datasheet

Anti-ZBRK1 antibody ab77085

★★★★★ [5 Abreviews](#) [3 References](#) [1 Image](#)

Overview

Product name	Anti-ZBRK1 antibody
Description	Rabbit polyclonal to ZBRK1
Host species	Rabbit
Tested applications	Suitable for: WB
Species reactivity	Reacts with: Mouse
Immunogen	Synthetic peptide corresponding to Human ZBRK1 (C terminal). Database link: NP_067645 (Peptide available as ab150315)

General notes

The Life Science industry has been in the grips of a reproducibility crisis for a number of years. Abcam is leading the way in addressing this with our range of recombinant monoclonal antibodies and knockout edited cell lines for gold-standard validation. Please check that this product meets your needs before purchasing.

If you have any questions, special requirements or concerns, please send us an inquiry and/or contact our Support team ahead of purchase. Recommended alternatives for this product can be found below, along with publications, customer reviews and Q&As

Properties

Form	Liquid
Storage instructions	Shipped at 4°C. Store at +4°C.
Storage buffer	pH: 7.2 Preservative: 0.02% Sodium azide Constituent: PBS
Purity	Immunogen affinity purified
Clonality	Polyclonal
Isotype	IgG

Applications

The Abpromise guarantee

Our [Abpromise guarantee](#) covers the use of ab77085 in the following tested applications.

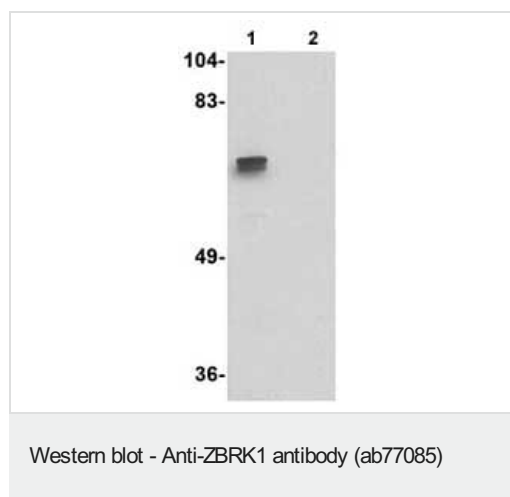
The application notes include recommended starting dilutions; optimal dilutions/concentrations should be determined by the end user.

Application	Abreviews	Notes
WB	★★★★☆ (3)	Use a concentration of 1 - 2 µg/ml. Predicted molecular weight: 60 kDa.

Target

Function	Transcriptional repressor. Binds to a specific sequence, 5'-GGGxxxCAGxxxTTT-3', within GADD45 intron 3.
Tissue specificity	Widely expressed.
Sequence similarities	Belongs to the krueppel C2H2-type zinc-finger protein family. Contains 8 C2H2-type zinc fingers. Contains 1 KRAB domain.
Cellular localization	Nucleus matrix. Associated with the nuclear matrix.

Images



All lanes : Anti-ZBRK1 antibody (ab77085) at 1 µg/ml

Lane 1 : A-20 lysate

Lane 2 : A-20 lysate with blocking peptide

Lysates/proteins at 15 µg per lane.

Predicted band size: 60 kDa

Observed band size: 60 kDa

Please note: All products are "FOR RESEARCH USE ONLY. NOT FOR USE IN DIAGNOSTIC PROCEDURES"

Our Abpromise to you: Quality guaranteed and expert technical support

- Replacement or refund for products not performing as stated on the datasheet
- Valid for 12 months from date of delivery
- Response to your inquiry within 24 hours
- We provide support in Chinese, English, French, German, Japanese and Spanish
- Extensive multi-media technical resources to help you
- We investigate all quality concerns to ensure our products perform to the highest standards

If the product does not perform as described on this datasheet, we will offer a refund or replacement. For full details of the Abpromise,

please visit <https://www.abcam.com/abpromise> or contact our technical team.

Terms and conditions

- Guarantee only valid for products bought direct from Abcam or one of our authorized distributors