


# Anti-ZBTB7A antibody ab70208

[6 References](#) [4 Images](#)

## Overview

<b>Product name</b>	Anti-ZBTB7A antibody
<b>Description</b>	Rabbit polyclonal to ZBTB7A
<b>Host species</b>	Rabbit
<b>Specificity</b>	We have data to indicate that this antibody may not cross react with Mouse. However, this has not been conclusively tested and expression levels may vary in certain cell lines/tissues.
<b>Tested applications</b>	<b>Suitable for:</b> WB, IP, IHC-P
<b>Species reactivity</b>	<b>Reacts with:</b> Human <b>Predicted to work with:</b> Chimpanzee, Rhesus monkey 
<b>Immunogen</b>	Synthetic peptide corresponding to Human ZBTB7A aa 500-600 (C terminal).
<b>General notes</b>	<p>The Life Science industry has been in the grips of a reproducibility crisis for a number of years. Abcam is leading the way in addressing this with our range of recombinant monoclonal antibodies and knockout edited cell lines for gold-standard validation. Please check that this product meets your needs before purchasing.</p> <p>If you have any questions, special requirements or concerns, please send us an inquiry and/or contact our Support team ahead of purchase. Recommended alternatives for this product can be found below, along with publications, customer reviews and Q&amp;As</p>

## Properties

<b>Form</b>	Liquid
<b>Storage instructions</b>	Shipped at 4°C. Upon delivery aliquot and store at -20°C. Avoid freeze / thaw cycles.
<b>Storage buffer</b>	pH: 6.8 Preservative: 0.09% Sodium azide Constituents: 0.1% BSA, Tris buffered saline
<b>Purity</b>	Immunogen affinity purified
<b>Clonality</b>	Polyclonal
<b>Isotype</b>	IgG

## Applications

## The Abpromise guarantee

Our **Abpromise guarantee** covers the use of ab70208 in the following tested applications.

The application notes include recommended starting dilutions; optimal dilutions/concentrations should be determined by the end user.

Application	Abreviews	Notes
WB		1/2000 - 1/10000. Detects a band of approximately 73 kDa (predicted molecular weight: 62 kDa).
IP		Use at 2-5 µg/mg of lysate.
IHC-P		1/100 - 1/500. Perform heat mediated antigen retrieval with Tris/EDTA buffer pH 9.0 before commencing with IHC staining protocol.

## Target

### Function

Plays a key role in the instruction of early lymphoid progenitors to develop into B lineage by repressing T-cell instructive Notch signals (By similarity). Specifically represses the transcription of the CDKN2A gene. Efficiently abrogates E2F1-dependent CDKN2A transactivation/de-repression. Binds to the consensus sequence 5'-[GA][CA]GACCCCCCCCC-3'.

### Tissue specificity

Widely expressed. In normal thymus, expressed in medullary epithelial cells and Hassle's corpuscles (at protein level). In tonsil, expressed in squamous epithelium and germinal center lymphocytes (at protein level). Up-regulated in a subset of lymphomas, as well as in a subset of breast, lung, colon, prostate and bladder carcinomas (at protein level).

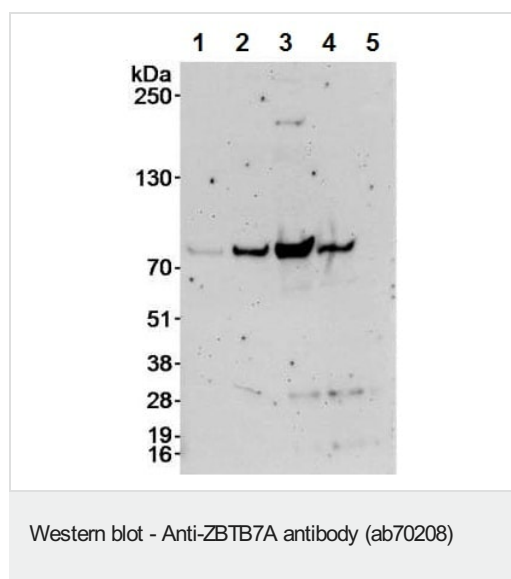
### Sequence similarities

Contains 1 BTB (POZ) domain.  
Contains 4 C2H2-type zinc fingers.

### Cellular localization

Nucleus.

## Images



**All lanes :** Anti-ZBTB7A antibody (ab70208) at 0.04 µg/ml

**Lane 1 :** HeLa whole cell lysate at 5 µg

**Lane 2 :** HeLa whole cell lysate at 15 µg

**Lane 3 :** HeLa whole cell lysate at 50 µg

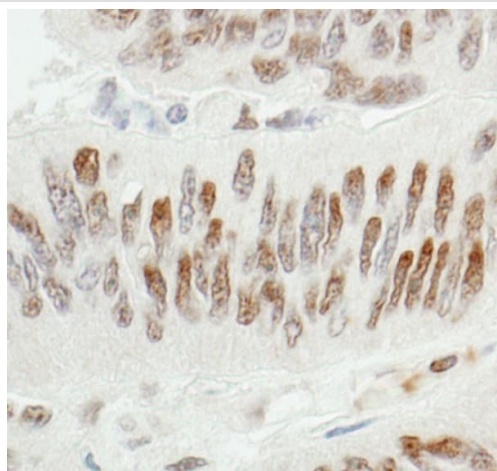
**Lane 4 :** 293T whole cell lysate at 50 µg

**Lane 5 :** NIH3T3 whole cell lysate at 50 µg

Developed using the ECL technique.

**Predicted band size:** 62 kDa

**Exposure time:** 3 minutes



Immunohistochemistry (Formalin/PFA-fixed paraffin-embedded sections) - Anti-ZBTB7A antibody (ab70208)

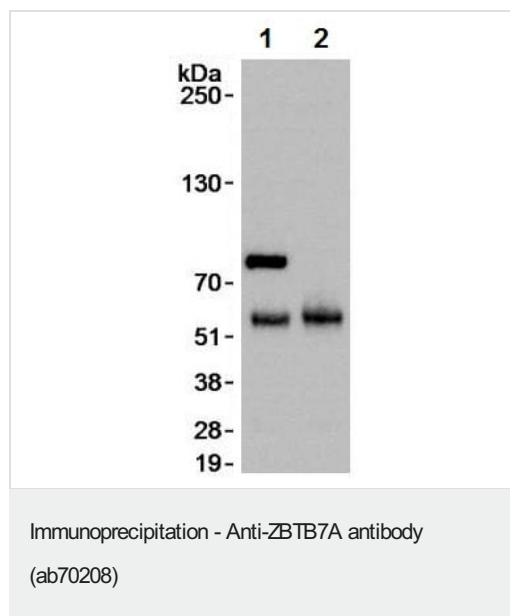
Immunohistochemistry (Formalin/PFA-fixed paraffin-embedded sections) analysis of human colon carcinoma tissue labelling ZBTB7A with ab70208 at 1/200 (1µg/ml). Detection: DAB.



Immunohistochemistry (Formalin/PFA-fixed paraffin-embedded sections) - Anti-ZBTB7A antibody (ab70208)

IHC image of ZBTB7A staining in Human Normal Tonsil formalin fixed paraffin embedded tissue section, performed on a Leica Bond™ system using the standard protocol F. The section was pre-treated using heat mediated antigen retrieval with sodium citrate buffer (pH6, epitope retrieval solution 1) for 20 mins. The section was then incubated with ab70208, 5µg/ml, for 15 mins at room temperature and detected using an HRP conjugated compact polymer system. DAB was used as the chromogen. The section was then counterstained with haematoxylin and mounted with DPX.

For other IHC staining systems (automated and non-automated) customers should optimize variable parameters such as antigen retrieval conditions, primary antibody concentration and antibody incubation times.



Immunoprecipitation analysis of HeLa whole cell lysate (1 mg for IP; 1/4 of IP loaded). ab70208 was used at 3 µg/mg lysate for IP and 0.04 µg/ml for WB. Lane 1 - ab70208 IP, Lane 2 - control IgG.

**Please note:** All products are "FOR RESEARCH USE ONLY. NOT FOR USE IN DIAGNOSTIC PROCEDURES"

### Our Abpromise to you: Quality guaranteed and expert technical support

---

- Replacement or refund for products not performing as stated on the datasheet
- Valid for 12 months from date of delivery
- Response to your inquiry within 24 hours
- We provide support in Chinese, English, French, German, Japanese and Spanish
- Extensive multi-media technical resources to help you
- We investigate all quality concerns to ensure our products perform to the highest standards

If the product does not perform as described on this datasheet, we will offer a refund or replacement. For full details of the Abpromise, please visit <https://www.abcam.com/abpromise> or contact our technical team.

### Terms and conditions

---

- Guarantee only valid for products bought direct from Abcam or one of our authorized distributors