




Product datasheet

Anti-ZEB1 antibody [OTI3G6] - N-terminal ab180905

★★★★☆ [3 Abreviews](#) [19 References](#) [6 Images](#)

Overview

Product name	Anti-ZEB1 antibody [OTI3G6] - N-terminal
Description	Mouse monoclonal [OTI3G6] to ZEB1 - N-terminal
Host species	Mouse
Specificity	Does not cross react with ZEB2.
Tested applications	Suitable for: WB, IHC-P
Species reactivity	Reacts with: Human Predicted to work with: Mouse, Rat, Chicken 
Immunogen	Recombinant fragment corresponding to Human ZEB1 aa 1-350 (N terminal). Produced in <i>E.coli</i> (NP_110378). Database link: P37275  Run BLAST with  Run BLAST with
Positive control	IHC-P: Human lung carcinoma, breast adenocarcinoma, kidney carcinoma, endometrium adenocarcinoma, prostate and lymph node tissues.
General notes	Dilute in PBS (pH7.3) if necessary. The clone number has been updated from 3G6 to OTI3G6, both clone numbers name the same clone. This product was changed from ascites to tissue culture supernatant on 6 th September 2018. Please note that the dilutions may need to be adjusted accordingly. If you have any questions, please do not hesitate to contact our scientific support team. The Life Science industry has been in the grips of a reproducibility crisis for a number of years. Abcam is leading the way in addressing this with our range of recombinant monoclonal antibodies and knockout edited cell lines for gold-standard validation. Please check that this product meets your needs before purchasing. If you have any questions, special requirements or concerns, please send us an inquiry and/or contact our Support team ahead of purchase. Recommended alternatives for this product can be found below, along with publications, customer reviews and Q&As

Properties

Form Liquid

Storage instructions	Shipped at 4°C. Store at +4°C short term (1-2 weeks). Upon delivery aliquot. Store at -20°C long term. Avoid freeze / thaw cycle.
Storage buffer	pH: 7.30 Preservative: 0.02% Sodium azide Constituents: 50% Glycerol, 1% BSA, 48% PBS
Purity	Protein A purified
Purification notes	Purified from TCS
Clonality	Monoclonal
Clone number	OTI3G6
Isotype	IgG2a

Applications

The Abpromise guarantee Our **Abpromise guarantee** covers the use of ab180905 in the following tested applications. The application notes include recommended starting dilutions; optimal dilutions/concentrations should be determined by the end user.

Application	Abreviews	Notes
WB	★★★★★ (1)	Use at an assay dependent concentration.
IHC-P	★★★★★ (1)	1/150.

Target

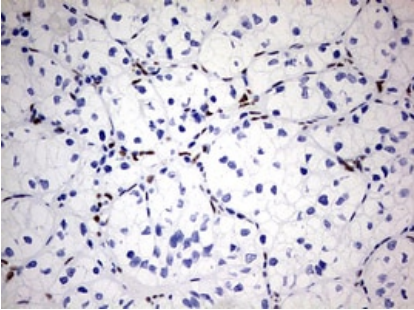
Function	Inhibits interleukin-2 (IL-2) gene expression. May be responsible for transcriptional repression of the IL-2 gene. Enhances or represses the promoter activity of the ATP1A1 gene depending on the quantity of cDNA and on the cell type. Represses E-cadherin promoter and induces an epithelial-mesenchymal transition (EMT) by recruiting SMARCA4/BRG1. Represses BCL6 transcription in the presence of the corepressor CTBP1. Promotes tumorigenicity by repressing stemness-inhibiting microRNAs.
Tissue specificity	Colocalizes with SMARCA4/BRG1 in E-cadherin-negative cells from established lines, and stroma of normal colon as well as in de-differentiated epithelial cells at the invasion front of colorectal carcinomas (at protein level). Expressed in heart and skeletal muscle, but not in liver, spleen, or pancreas.
Involvement in disease	Defects in ZEB1 are the cause of posterior polymorphous corneal dystrophy type 3 (PPCD3) [MIM:609141]. PPCD is a rare disease involving metaplasia and overgrowth of corneal endothelial cells. In patients with PPCD, these cells manifest in an epithelial morphology and gene expression pattern, produce an aberrant basement membrane, and, sometimes, spread over the iris and nearby structures in a way that increases the risk for glaucoma. Defects in ZEB1 are the cause of corneal dystrophy Fuchs endothelial type 6 (FECD6) [MIM:613270]. It is an ocular disorder caused by loss of endothelium of the central cornea. It is characterized by focal wart-like guttata that arise from Descemet membrane and develop in the central cornea, epithelial blisters, reduced vision and pain. Descemet membrane is thickened by abnormal collagenous deposition.
Sequence similarities	Belongs to the delta-EF1/ZFH-1 C2H2-type zinc-finger family. Contains 7 C2H2-type zinc fingers.

Contains 1 homeobox DNA-binding domain.

Cellular localization

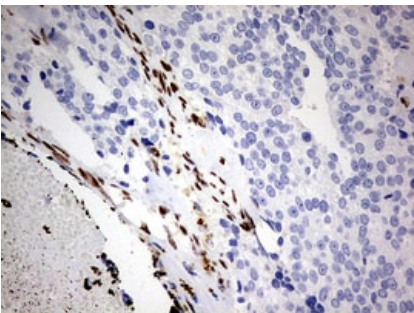
Nucleus.

Images



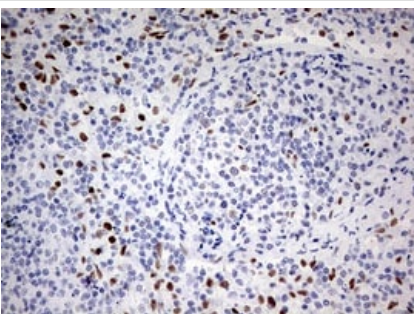
Immunohistochemistry (Formalin/PFA-fixed paraffin-embedded sections) analysis of human kidney carcinoma tissue labeling ZEB1 with ab180905. Heat mediated antigen retrieval was performed using 10mM citrate buffer pH 6 for 3 minutes at 120°C.

Immunohistochemistry (Formalin/PFA-fixed paraffin-embedded sections) - Anti-ZEB1 antibody [OTI3G6] - N-terminal (ab180905)



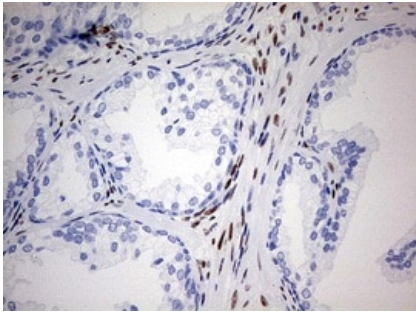
Immunohistochemistry (Formalin/PFA-fixed paraffin-embedded sections) analysis of human breast adenocarcinoma tissue labeling ZEB1 with ab180905. Heat mediated antigen retrieval was performed using 10mM citrate buffer pH 6 for 3 minutes at 120°C.

Immunohistochemistry (Formalin/PFA-fixed paraffin-embedded sections) - Anti-ZEB1 antibody [OTI3G6] - N-terminal (ab180905)



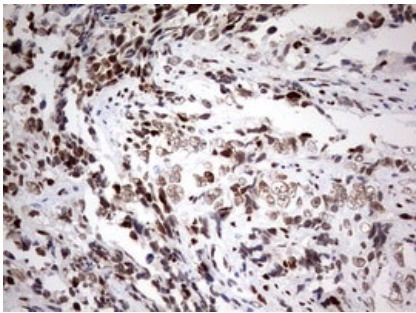
Immunohistochemical analysis of paraffin-embedded Human lymph node tissue labeling ZEB1 with ab180905 at 1/150 dilution.

Immunohistochemistry (Formalin/PFA-fixed paraffin-embedded sections) - Anti-ZEB1 antibody [OTI3G6] - N-terminal (ab180905)



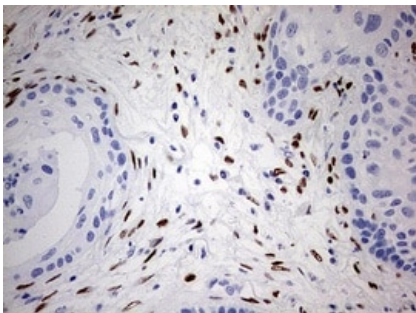
Immunohistochemical analysis of paraffin-embedded Human prostate tissue labeling ZEB1 with ab180905 at 1/150 dilution.

Immunohistochemistry (Formalin/PFA-fixed paraffin-embedded sections) - Anti-ZEB1 antibody [OTI3G6] - N-terminal (ab180905)



Immunohistochemical analysis of paraffin-embedded Human endometrium adenocarcinoma tissue labeling ZEB1 with ab180905 at 1/150 dilution.

Immunohistochemistry (Formalin/PFA-fixed paraffin-embedded sections) - Anti-ZEB1 antibody [OTI3G6] - N-terminal (ab180905)



Immunohistochemical analysis of paraffin-embedded Human lung carcinoma tissue labeling ZEB1 with ab180905 at 1/150 dilution.

Immunohistochemistry (Formalin/PFA-fixed paraffin-embedded sections) - Anti-ZEB1 antibody [OTI3G6] - N-terminal (ab180905)

Please note: All products are "FOR RESEARCH USE ONLY. NOT FOR USE IN DIAGNOSTIC PROCEDURES"

Our Abpromise to you: Quality guaranteed and expert technical support

- Replacement or refund for products not performing as stated on the datasheet

- Valid for 12 months from date of delivery
- Response to your inquiry within 24 hours

- We provide support in Chinese, English, French, German, Japanese and Spanish
- Extensive multi-media technical resources to help you
- We investigate all quality concerns to ensure our products perform to the highest standards

If the product does not perform as described on this datasheet, we will offer a refund or replacement. For full details of the Abpromise, please visit <https://www.abcam.com/abpromise> or contact our technical team.

Terms and conditions

- Guarantee only valid for products bought direct from Abcam or one of our authorized distributors