


### Anti-Zfp281/ZNF281 antibody ab101318

★★★★★ [2 Abreviews](#) [10 References](#) [1 Image](#)

#### Overview

<b>Product name</b>	Anti-Zfp281/ZNF281 antibody
<b>Description</b>	Rabbit polyclonal to Zfp281/ZNF281
<b>Host species</b>	Rabbit
<b>Specificity</b>	From Jan 2024, QC testing of replenishment batches of this polyclonal changed. All tested and expected application and reactive species combinations are still covered by our Abcam product promise. However, we no longer test all applications. For more information on a specific batch, please contact our Scientific Support who will be happy to help.
<b>Tested applications</b>	<b>Suitable for:</b> WB, IP
<b>Species reactivity</b>	<b>Reacts with:</b> Mouse <b>Predicted to work with:</b> Rat, Rabbit, Horse, Dog, Human, Chimpanzee, Macaque monkey, Gorilla, Chinese hamster 
<b>Immunogen</b>	Synthetic peptide corresponding to Human Zfp281/ZNF281 aa 800 to the C-terminus conjugated to keyhole limpet haemocyanin. (Peptide available as <a href="#">ab130905</a> )
<b>Positive control</b>	This antibody gave a positive signal in a wild type mouse embryonic stem cell lysate, which is absent from a Zfp281/ZNF281 null mouse embryonic stem cell lysate.
<b>General notes</b>	<p>The Life Science industry has been in the grips of a reproducibility crisis for a number of years. Abcam is leading the way in addressing this with our range of recombinant monoclonal antibodies and knockout edited cell lines for gold-standard validation. Please check that this product meets your needs before purchasing.</p> <p>If you have any questions, special requirements or concerns, please send us an inquiry and/or contact our Support team ahead of purchase. Recommended alternatives for this product can be found below, along with publications, customer reviews and Q&amp;As</p>

#### Properties

<b>Form</b>	Liquid
<b>Storage instructions</b>	Shipped at 4°C. Store at +4°C short term (1-2 weeks). Upon delivery aliquot. Store at -20°C or -80°C. Avoid freeze / thaw cycle.
<b>Storage buffer</b>	pH: 7.40 Preservative: 0.02% Sodium azide

Constituent: PBS

Batches of this product that have a concentration < 1mg/ml may have BSA added as a stabilising agent. If you would like information about the formulation of a specific lot, please contact our scientific support team who will be happy to help.

<b>Purity</b>	Immunogen affinity purified
<b>Clonality</b>	Polyclonal
<b>Isotype</b>	IgG

## Applications

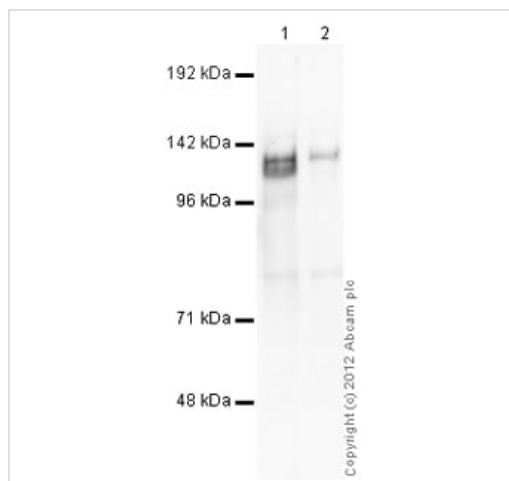
**The Abpromise guarantee** Our **Abpromise guarantee** covers the use of ab101318 in the following tested applications. The application notes include recommended starting dilutions; optimal dilutions/concentrations should be determined by the end user.

Application	Abreviews	Notes
<b>WB</b>	★★★★★ (1)	Use a concentration of 1 µg/ml. Detects a band of approximately 120 kDa (predicted molecular weight: 97 kDa).
<b>IP</b>	★★★★★ (1)	Use at an assay dependent concentration.

## Target

<b>Function</b>	Involved in transcriptional regulation. Represses the transcription of a number of genes including gastrin and ornithine decarboxylase. Binds to the G-rich box in the enhancer region of these genes.
<b>Sequence similarities</b>	Belongs to the krueppel C2H2-type zinc-finger protein family. Contains 4 C2H2-type zinc fingers.
<b>Post-translational modifications</b>	Phosphorylated upon DNA damage, probably by ATM or ATR.
<b>Cellular localization</b>	Nucleus.

## Images



Western blot - Anti-Zfp281/ZNF281 antibody  
(ab101318)

**All lanes :** Anti-Zfp281/ZNF281 antibody (ab101318) at 1 µg/ml

**Lane 1 :** wild type mouse embryonic stem cell lysate

**Lane 2 :** Zfp281/ZNF281 null mouse embryonic stem cell lysate

Lysates/proteins at 10 µg per lane.

#### Secondary

**All lanes :** Goat Anti-Rabbit IgG H&L (HRP) preadsorbed  
([ab97080](#)) at 1/5000 dilution

Developed using the ECL technique.

Performed under reducing conditions.

**Predicted band size:** 97 kDa

**Observed band size:** 120 kDa

**Additional bands at:** 78 kDa. We are unsure as to the identity of these extra bands.

**Exposure time:** 4 minutes

**Please note:** All products are "FOR RESEARCH USE ONLY. NOT FOR USE IN DIAGNOSTIC PROCEDURES"

#### Our Abpromise to you: Quality guaranteed and expert technical support

- Replacement or refund for products not performing as stated on the datasheet
- Valid for 12 months from date of delivery
- Response to your inquiry within 24 hours
- We provide support in Chinese, English, French, German, Japanese and Spanish
- Extensive multi-media technical resources to help you
- We investigate all quality concerns to ensure our products perform to the highest standards

If the product does not perform as described on this datasheet, we will offer a refund or replacement. For full details of the Abpromise, please visit <https://www.abcam.com/abpromise> or contact our technical team.

#### **Terms and conditions**

---

- Guarantee only valid for products bought direct from Abcam or one of our authorized distributors