

Anti-Zinc Alpha 2 Glycoprotein antibody [EPR14425(B)] ab180574

Recombinant RabMAb

[2 References](#) [5 Images](#)

Overview

Product name	Anti-Zinc Alpha 2 Glycoprotein antibody [EPR14425(B)]
Description	Rabbit monoclonal [EPR14425(B)] to Zinc Alpha 2 Glycoprotein
Host species	Rabbit
Tested applications	Suitable for: WB, IP, IHC-P
Species reactivity	Reacts with: Human
Immunogen	Synthetic peptide. This information is proprietary to Abcam and/or its suppliers.
Positive control	Human Plasma and HepG2 cell lines; Human liver tissue.
General notes	<p>This product is a recombinant monoclonal antibody, which offers several advantages including:</p> <ul style="list-style-type: none"> - High batch-to-batch consistency and reproducibility - Improved sensitivity and specificity - Long-term security of supply - Animal-free production <p>For more information see here.</p> <p>Our RabMAb[®] technology is a patented hybridoma-based technology for making rabbit monoclonal antibodies. For details on our patents, please refer to RabMAb[®] patents.</p>

Properties

Form	Liquid
Storage instructions	Shipped at 4°C. Store at +4°C short term (1-2 weeks). Upon delivery aliquot. Store at -20°C long term. Avoid freeze / thaw cycle.
Storage buffer	<p>pH: 7.2</p> <p>Preservative: 0.01% Sodium azide</p> <p>Constituents: 9% PBS, 40% Glycerol (glycerin, glycerine), 0.05% BSA, 50% Tissue culture supernatant</p>
Purity	Protein A purified
Clonality	Monoclonal
Clone number	EPR14425(B)

Isotype

IgG

Applications

The Abpromise guarantee

Our **Abpromise guarantee** covers the use of ab180574 in the following tested applications.

The application notes include recommended starting dilutions; optimal dilutions/concentrations should be determined by the end user.

Application	Abreviews	Notes
WB		1/1000 - 1/10000. Detects a band of approximately 41 kDa (predicted molecular weight: 34 kDa).
IP		1/30.
IHC-P		1/250. Perform heat mediated antigen retrieval before commencing with IHC staining protocol.

Target

Function

Stimulates lipid degradation in adipocytes and causes the extensive fat losses associated with some advanced cancers. May bind polyunsaturated fatty acids.

Tissue specificity

Blood plasma, seminal plasma, urine, saliva, sweat, epithelial cells of various human glands, liver.

Sequence similarities

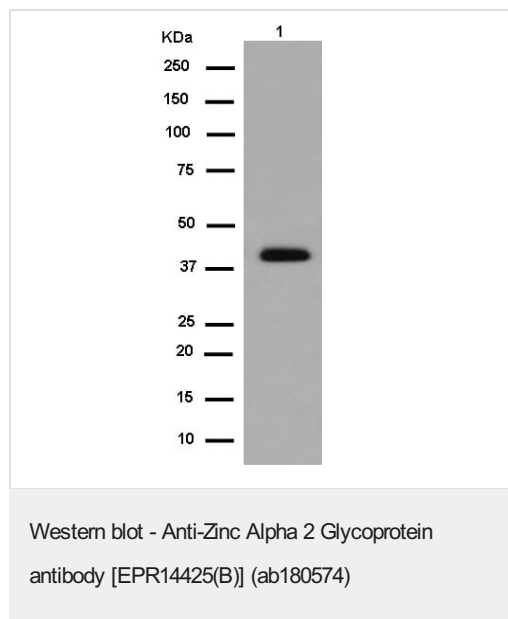
Belongs to the MHC class I family.

Contains 1 Ig-like C1-type (immunoglobulin-like) domain.

Cellular localization

Secreted.

Images



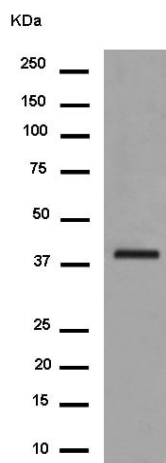
Anti-Zinc Alpha 2 Glycoprotein antibody [EPR14425(B)]
(ab180574) at 1/20000 dilution + Human plasma at 20 µg

Secondary

Anti-rabbit (HRP) specific to the non-reduced form of IgG at 1/1000 dilution

Predicted band size: 34 kDa

Blocking and dilution buffer: 5% NFDM/TBST.



Western blot - Anti-Zinc Alpha 2 Glycoprotein antibody [EPR14425(B)] (ab180574)

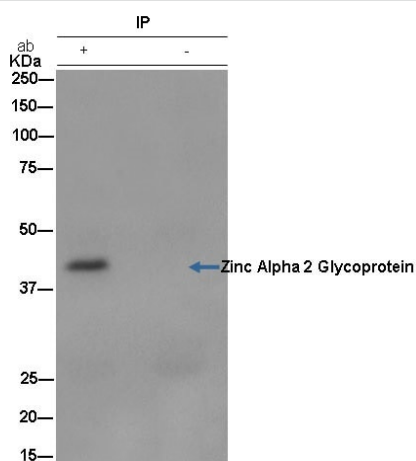
Anti-Zinc Alpha 2 Glycoprotein antibody [EPR14425(B)] (ab180574) at 1/2000 dilution + HepG2 cell lysate at 10 µg

Secondary

Goat Anti-rabbit HRP at 1/1000 dilution

Predicted band size: 34 kDa

Blocking and dilution buffer: 5% NFDM/TBST.



Immunoprecipitation - Anti-Zinc Alpha 2 Glycoprotein antibody [EPR14425(B)] (ab180574)

Immunoprecipitation of Human plasma labeling Zinc Alpha 2 Glycoprotein using ab180574 at a 1/30 dilution (lane 1). Lane 2 shows the negative control. Anti-Rabbit IgG (HRP), specific to the non-reduced form of IgG, was used as a secondary antibody at a dilution of 1/1500.

Blocking/dilution buffer and concentration: 5% NFDM/TBST

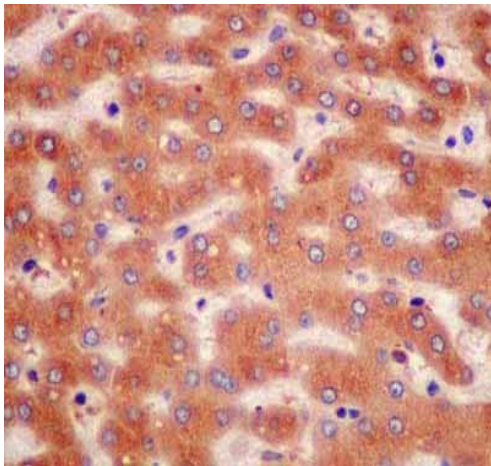
All lanes : Anti-Zinc Alpha 2 Glycoprotein antibody [EPR14425(B)] (ab180574) at 1/30 dilution

Lane 1 : Human plasma

Lane 2 : Negative control

Secondary

All lanes : Anti-Rabbit (HRP) specific to the non-reduced form of IgG at 1/500 dilution



Immunohistochemistry (Formalin/PFA-fixed paraffin-embedded sections) - Anti-Zinc Alpha 2 Glycoprotein antibody [EPR14425(B)] (ab180574)

Immunohistochemical analysis of Human liver tissue labeling Zinc Alpha 2 Glycoprotein with ab180574 at 1/250 dilution. Prediluted (ready to use) HRP Polymer for Rabbit IgG was used as a secondary antibody. Counter stain: Hematoxylin.

Perform heat mediated antigen retrieval before commencing with IHC staining protocol.

Why choose a recombinant antibody?



Research with confidence
Consistent and reproducible results



Long-term and scalable supply
Recombinant technology



Success from the first experiment
Confirmed specificity



Ethical standards compliant
Animal-free production

Anti-Zinc Alpha 2 Glycoprotein antibody
[EPR14425(B)] (ab180574)

Please note: All products are "FOR RESEARCH USE ONLY. NOT FOR USE IN DIAGNOSTIC PROCEDURES"

Our Abpromise to you: Quality guaranteed and expert technical support

- Replacement or refund for products not performing as stated on the datasheet
- Valid for 12 months from date of delivery
- Response to your inquiry within 24 hours
- We provide support in Chinese, English, French, German, Japanese and Spanish
- Extensive multi-media technical resources to help you
- We investigate all quality concerns to ensure our products perform to the highest standards

If the product does not perform as described on this datasheet, we will offer a refund or replacement. For full details of the Abpromise, please visit <https://www.abcam.com/abpromise> or contact our technical team.

Terms and conditions

- Guarantee only valid for products bought direct from Abcam or one of our authorized distributors