


## Product datasheet

# Anti-Zmat2 antibody [EPR11136] ab169541

Recombinant RabMAb

5 Images

### Overview

<b>Product name</b>	Anti-Zmat2 antibody [EPR11136]
<b>Description</b>	Rabbit monoclonal [EPR11136] to Zmat2
<b>Host species</b>	Rabbit
<b>Tested applications</b>	<b>Suitable for:</b> WB, IHC-P, ICC/IF <b>Unsuitable for:</b> Flow Cyt or IP
<b>Species reactivity</b>	<b>Reacts with:</b> Human <b>Predicted to work with:</b> Mouse, Rat 
<b>Immunogen</b>	Synthetic peptide corresponding to Human Zmat2.
<b>Positive control</b>	Jurkat, U87-MG, Ramos, HeLa and SH-SY5Y cell lysates; Human colon tissue and ovarian carcinoma tissue; HeLa cells.
<b>General notes</b>	This product is a recombinant monoclonal antibody, which offers several advantages including: <ul style="list-style-type: none"> <li>- High batch-to-batch consistency and reproducibility</li> <li>- Improved sensitivity and specificity</li> <li>- Long-term security of supply</li> <li>- Animal-free production</li> </ul> For more information <a href="#">see here</a> . Our RabMAb <sup>®</sup> technology is a patented hybridoma-based technology for making rabbit monoclonal antibodies. For details on our patents, please refer to <a href="#">RabMAb<sup>®</sup> patents</a> .

### Properties

<b>Form</b>	Liquid
<b>Storage instructions</b>	Shipped at 4°C. Store at +4°C short term (1-2 weeks). Add glycerol to a final volume of 50% for extra stability and aliquot. Store at -20°C or -80°C. Avoid freeze / thaw cycle.
<b>Storage buffer</b>	pH: 7.2 Preservative: 0.01% Sodium azide Constituents: 9% PBS, 40% Glycerol (glycerin, glycerine), 0.05% BSA, 50% Tissue culture supernatant
<b>Purity</b>	Protein A purified
<b>Clonality</b>	Monoclonal

Clone number EPR11136

Isotype IgG

## Applications

**The Abpromise guarantee** Our **Abpromise guarantee** covers the use of ab169541 in the following tested applications.

The application notes include recommended starting dilutions; optimal dilutions/concentrations should be determined by the end user.

Application	Abreviews	Notes
WB		1/1000 - 1/10000. Detects a band of approximately 24 kDa (predicted molecular weight: 24 kDa).
IHC-P		1/50 - 1/100. Perform heat mediated antigen retrieval before commencing with IHC staining protocol.
ICC/IF		1/250 - 1/500.

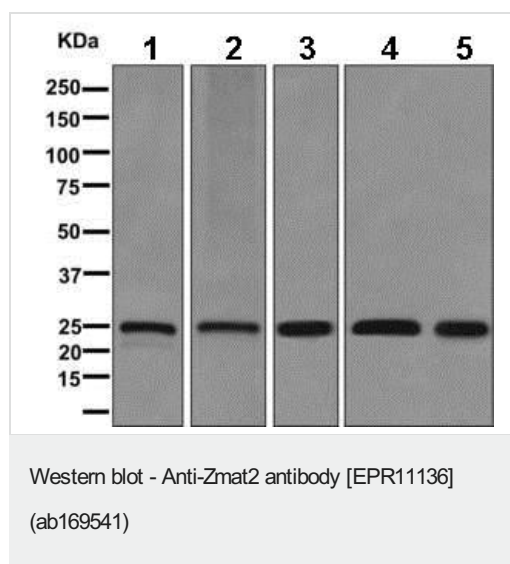
**Application notes** Is unsuitable for Flow Cyt or IP.

## Target

**Sequence similarities** Contains 1 matrin-type zinc finger.

**Cellular localization** Nucleus.

## Images



**All lanes** : Anti-Zmat2 antibody [EPR11136] (ab169541) at 1/1000 dilution

**Lane 1** : Jurkat cell lysate

**Lane 2** : U87-MG cell lysate

**Lane 3** : Ramos cell lysate

**Lane 4** : HeLa cell lysate

**Lane 5** : SH-SY5Y cell lysate

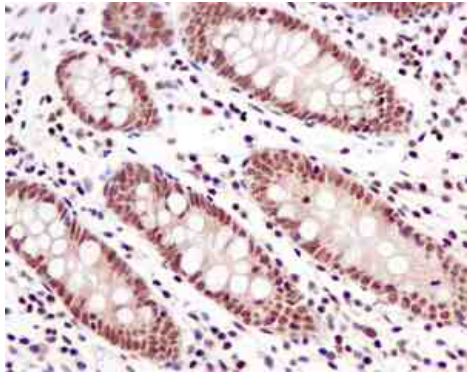
Lysates/proteins at 10 µg per lane.

### Secondary

**All lanes** : Goat anti-rabbit HRP conjugated at 1/2000 dilution

**Predicted band size:** 24 kDa

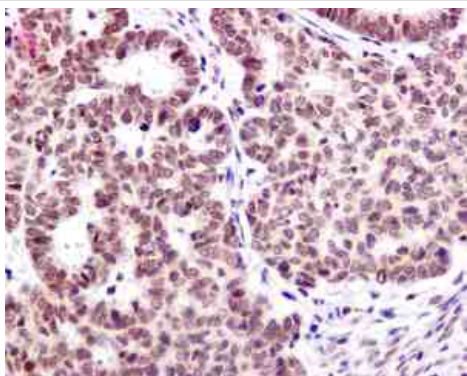
**Observed band size:** 24 kDa



Immunohistochemistry (Formalin/PFA-fixed paraffin-embedded sections) - Anti-Zmat2 antibody [EPR11136] (ab169541)

Immunohistochemical analysis of paraffin embedded Human colon tissue labeling Zmat2 with ab169541 antibody at 1/50.

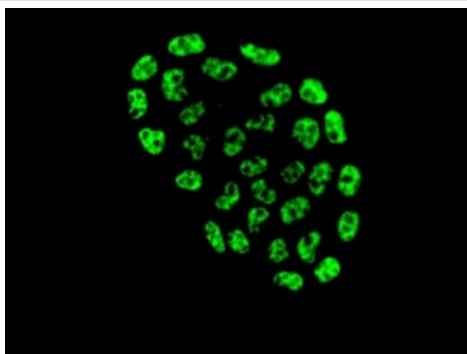
Perform heat mediated antigen retrieval before commencing with IHC staining protocol.



Immunohistochemistry (Formalin/PFA-fixed paraffin-embedded sections) - Anti-Zmat2 antibody [EPR11136] (ab169541)

Immunohistochemical analysis of paraffin embedded Human ovarian carcinoma tissue labeling Zmat2 with ab169541 antibody at 1/50.

Perform heat mediated antigen retrieval before commencing with IHC staining protocol.



Immunocytochemistry/ Immunofluorescence - Anti-Zmat2 antibody [EPR11136] (ab169541)

Immunofluorescent analysis of HeLa cells labeling Zmat2 with ab169541 at 1/250.

### Why choose a recombinant antibody?



**Research with confidence**  
Consistent and reproducible results



**Long-term and scalable supply**  
Recombinant technology



**Success from the first experiment**  
Confirmed specificity



**Ethical standards compliant**  
Animal-free production

Anti-Zmat2 antibody [EPR11136] (ab169541)

**Please note:** All products are "FOR RESEARCH USE ONLY. NOT FOR USE IN DIAGNOSTIC PROCEDURES"

### Our Abpromise to you: Quality guaranteed and expert technical support

---

- Replacement or refund for products not performing as stated on the datasheet
- Valid for 12 months from date of delivery
- Response to your inquiry within 24 hours
- We provide support in Chinese, English, French, German, Japanese and Spanish
- Extensive multi-media technical resources to help you
- We investigate all quality concerns to ensure our products perform to the highest standards

If the product does not perform as described on this datasheet, we will offer a refund or replacement. For full details of the Abpromise, please visit <https://www.abcam.com/abpromise> or contact our technical team.

### Terms and conditions

---

- Guarantee only valid for products bought direct from Abcam or one of our authorized distributors