

Product datasheet

Anti-ZNF750 antibody ab121685

[2 References](#) [2 Images](#)

Overview

Product name	Anti-ZNF750 antibody
Description	Rabbit polyclonal to ZNF750
Host species	Rabbit
Tested applications	Suitable for: IHC-P, ICC/IF
Species reactivity	Reacts with: Human
Immunogen	antigen sequence, corresponding to C terminal amino acids 621-721 of Human ZNF750.
Positive control	Human vagina tissue.
General notes	<p>The Life Science industry has been in the grips of a reproducibility crisis for a number of years. Abcam is leading the way in addressing this with our range of recombinant monoclonal antibodies and knockout edited cell lines for gold-standard validation. Please check that this product meets your needs before purchasing.</p> <p>If you have any questions, special requirements or concerns, please send us an inquiry and/or contact our Support team ahead of purchase. Recommended alternatives for this product can be found below, along with publications, customer reviews and Q&As</p>

Properties

Form	Liquid
Storage instructions	Shipped at 4°C. Upon delivery aliquot and store at -20°C. Avoid freeze / thaw cycles.
Storage buffer	<p>pH: 7.20</p> <p>Preservative: 0.02% Sodium azide</p> <p>Constituents: 59% PBS, 40% Glycerol (glycerin, glycerine)</p>
Purity	Immunogen affinity purified
Clonality	Polyclonal
Isotype	IgG

Applications

The Abpromise guarantee Our **Abpromise guarantee** covers the use of ab121685 in the following tested applications. The application notes include recommended starting dilutions; optimal dilutions/concentrations should be determined by the end user.

Application	Abreviews	Notes
IHC-P		1/20 - 1/50. Perform heat mediated antigen retrieval with citrate buffer pH 6 before commencing with IHC staining protocol.
ICC/IF		Use a concentration of 1 - 4 µg/ml. Recommend PFA Fixation and Triton X-100 treatment

Target

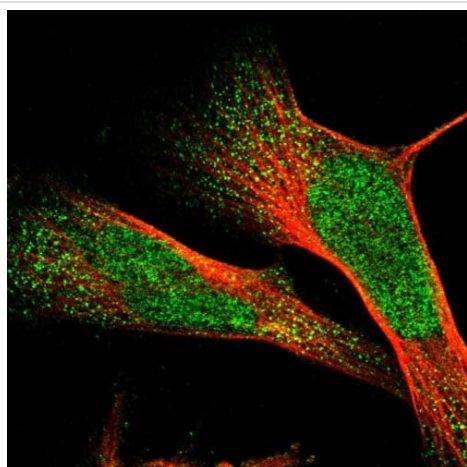
Tissue specificity

Expressed in the skin, prostate, lung, placenta and thymus, and at low level in T-cells. Not expressed in peripheral blood leukocytes, pancreas and brain. Clearly expressed in primary keratinocytes but not in fibroblasts.

Involvement in disease

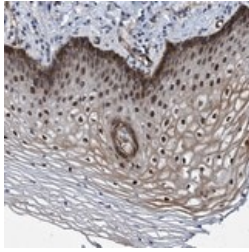
Defects in ZNF750 are the cause of Seborrhea-like dermatitis with psoriasiform (SLDP) [MIM:610227]. SLDP is characterized by a chronic fine diffuse scaly erythematous rash on the face, particularly on the chin, nasolabial folds and eyebrows, around earlobes and over the scalp. The rash exacerbate in the winter, with emotional stress and after strenuous physical activity. Hyperkeratosis of skin over the elbows, knees, palms, soles and metacarpophalangeal joints is evident. There is no arthralgia, arthritis or neurological disorders.

Images



Immunofluorescent staining of Human cell line U-251MG shows positivity in nucleus and vesicles. Recommended concentration of ab121685 1-4 µg/ml. Cells treated with PFA/Triton X-100.

Immunocytochemistry/ Immunofluorescence - Anti-ZNF750 antibody (ab121685)



ab121685 at 1/25 dilution staining ZNF750 in Paraffin-embedded Human Vagina tissue by Immunohistochemistry.

Immunohistochemistry (Formalin/PFA-fixed paraffin-embedded sections) - Anti-ZNF750 antibody (ab121685)

Please note: All products are "FOR RESEARCH USE ONLY. NOT FOR USE IN DIAGNOSTIC PROCEDURES"

Our Abpromise to you: Quality guaranteed and expert technical support

- Replacement or refund for products not performing as stated on the datasheet
- Valid for 12 months from date of delivery
- Response to your inquiry within 24 hours
- We provide support in Chinese, English, French, German, Japanese and Spanish
- Extensive multi-media technical resources to help you
- We investigate all quality concerns to ensure our products perform to the highest standards

If the product does not perform as described on this datasheet, we will offer a refund or replacement. For full details of the Abpromise, please visit <https://www.abcam.com/abpromise> or contact our technical team.

Terms and conditions

- Guarantee only valid for products bought direct from Abcam or one of our authorized distributors