

Product datasheet

Anti-ZPI antibody [EPR12072] ab181132

Recombinant RabMAb

3 Images

Overview

Product name	Anti-ZPI antibody [EPR12072]
Description	Rabbit monoclonal [EPR12072] to ZPI
Host species	Rabbit
Tested applications	Suitable for: IP, WB
Species reactivity	Reacts with: Human
Immunogen	Synthetic peptide. This information is proprietary to Abcam and/or its suppliers.
Positive control	Human plasma and serum.
General notes	<p>This product is a recombinant monoclonal antibody, which offers several advantages including:</p> <ul style="list-style-type: none"> - High batch-to-batch consistency and reproducibility - Improved sensitivity and specificity - Long-term security of supply - Animal-free production <p>For more information see here.</p> <p>Our RabMAb® technology is a patented hybridoma-based technology for making rabbit monoclonal antibodies. For details on our patents, please refer to RabMAb® patents.</p>

Properties

Form	Liquid
Storage instructions	Shipped at 4°C. Store at +4°C short term (1-2 weeks). Upon delivery aliquot. Store at -20°C long term. Avoid freeze / thaw cycle.
Storage buffer	Preservative: 0.01% Sodium azide Constituents: 59% PBS, 40% Glycerol (glycerin, glycerine), 0.05% BSA
Purity	Protein A purified
Clonality	Monoclonal
Clone number	EPR12072
Isotype	IgG

Applications

Applications

The Abpromise guarantee

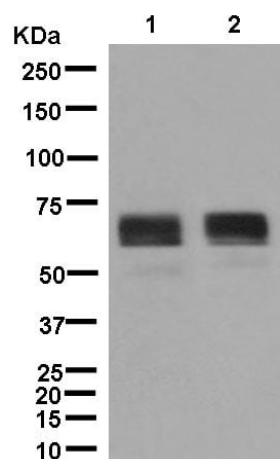
Our **Abpromise guarantee** covers the use of ab181132 in the following tested applications.

The application notes include recommended starting dilutions; optimal dilutions/concentrations should be determined by the end user.

Application	Abreviews	Notes
IP		1/60.
WB		1/1000. Detects a band of approximately 65 kDa (predicted molecular weight: 51 kDa).

Target

Images



Western blot - Anti-ZPI antibody [EPR12072]
(ab181132)

All lanes : Anti-ZPI antibody [EPR12072] (ab181132) at 1/1000 dilution

Lane 1 : Human plasma lysate

Lane 2 : Human serum lysate

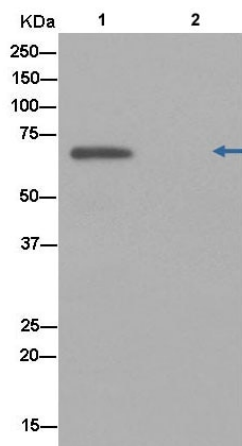
Lysates/proteins at 10 µg per lane.

Secondary

All lanes : Anti-Rabbit IgG (HRP), specific to the non-reduced form of IgG at 1/1000 dilution

Predicted band size: 51 kDa

Observed band size: 65 kDa



Western blot analysis of Human plasma lysate immunoprecipitated with ab181132 at 1/60 dilution (Lane 1). Lane 2: Negative control. Anti-Rabbit IgG (HRP) secondary antibody, specific to the non-reduced form of IgG was used at 1/1500 dilution.

Immunoprecipitation - Anti-ZPI antibody [EPR12072]
(ab181132)

Why choose a
recombinant antibody?



Research with confidence
Consistent and reproducible results



Long-term and scalable supply
Recombinant technology



Success from the first experiment
Confirmed specificity



Ethical standards compliant
Animal-free production

Anti-ZPI antibody [EPR12072] (ab181132)

Please note: All products are "FOR RESEARCH USE ONLY. NOT FOR USE IN DIAGNOSTIC PROCEDURES"

Our Abpromise to you: Quality guaranteed and expert technical support

- Replacement or refund for products not performing as stated on the datasheet
- Valid for 12 months from date of delivery
- Response to your inquiry within 24 hours
- We provide support in Chinese, English, French, German, Japanese and Spanish
- Extensive multi-media technical resources to help you
- We investigate all quality concerns to ensure our products perform to the highest standards

If the product does not perform as described on this datasheet, we will offer a refund or replacement. For full details of the Abpromise, please visit <https://www.abcam.com/abpromise> or contact our technical team.

Terms and conditions

- Guarantee only valid for products bought direct from Abcam or one of our authorized distributors