

## Product datasheet

# Anti-ZW10 antibody [3363C4 $\alpha$ ] ab53676

[3 References](#) [1 Image](#)

### Overview

---

<b>Product name</b>	Anti-ZW10 antibody [3363C4 $\alpha$ ]
<b>Description</b>	Mouse monoclonal [3363C4 $\alpha$ ] to ZW10
<b>Host species</b>	Mouse
<b>Tested applications</b>	<b>Suitable for:</b> WB
<b>Species reactivity</b>	<b>Reacts with:</b> Recombinant fragment
<b>Immunogen</b>	ZW10 recombinant fragment, internal sequence, (Human).
<b>General notes</b>	<p>The antibody was purified using protein G column chromatography from culture supernatant of hybridoma cultured in a medium containing bovine IgG-depleted (approximately 95%) fetal bovine serum.</p> <p>The Life Science industry has been in the grips of a reproducibility crisis for a number of years. Abcam is leading the way in addressing this with our range of recombinant monoclonal antibodies and knockout edited cell lines for gold-standard validation. Please check that this product meets your needs before purchasing.</p> <p>If you have any questions, special requirements or concerns, please send us an inquiry and/or contact our Support team ahead of purchase. Recommended alternatives for this product can be found below, along with publications, customer reviews and Q&amp;As</p>

### Properties

---

<b>Form</b>	Liquid
<b>Storage instructions</b>	Shipped at 4°C. Store at +4°C short term (1-2 weeks). Upon delivery aliquot. Store at -20°C long term.
<b>Storage buffer</b>	pH: 7.40 Preservative: 0.05% Sodium azide Constituents: 0.0204% Monobasic dihydrogen potassium phosphate, 0.1136% Dibasic monohydrogen sodium phosphate, 1% BSA, 0.03% Potassium phosphate, 0.812% Sodium chloride, 0.1312% Sodium phosphate, 0.0225% Potassium chloride
<b>Purity</b>	Protein G purified
<b>Clonality</b>	Monoclonal
<b>Clone number</b>	3363C4 $\alpha$
<b>Isotype</b>	IgG1

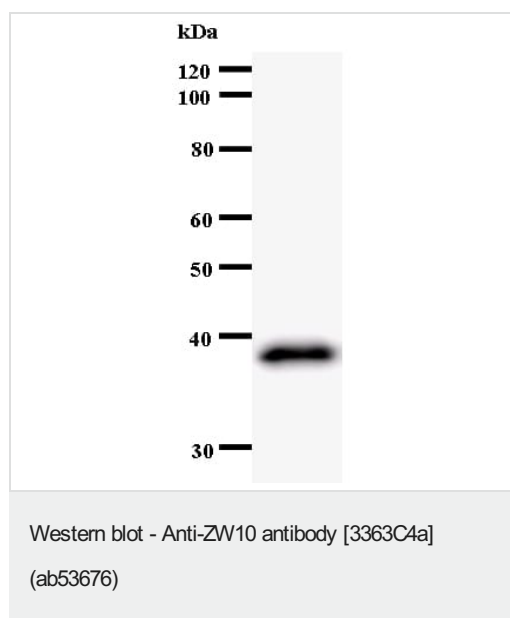
## Applications

**The Abpromise guarantee** Our **Abpromise guarantee** covers the use of ab53676 in the following tested applications. The application notes include recommended starting dilutions; optimal dilutions/concentrations should be determined by the end user.

Application	Abreviews	Notes
WB		Use at an assay dependent concentration. Predicted molecular weight: 89 kDa.

## Target

## Images



Anti-ZW10 antibody [3363C4a] (ab53676) + Immunizing recombinant ZW10 fragment

**Predicted band size:** 89 kDa

**Observed band size:** 38 kDa

The molecular weight of the band on the western blot does not correspond to the molecular weight of the natural protein because only a fragment of the protein was used.

**Please note:** All products are "FOR RESEARCH USE ONLY. NOT FOR USE IN DIAGNOSTIC PROCEDURES"

## Our Abpromise to you: Quality guaranteed and expert technical support

- Replacement or refund for products not performing as stated on the datasheet
- Valid for 12 months from date of delivery
- Response to your inquiry within 24 hours
- We provide support in Chinese, English, French, German, Japanese and Spanish
- Extensive multi-media technical resources to help you
- We investigate all quality concerns to ensure our products perform to the highest standards

If the product does not perform as described on this datasheet, we will offer a refund or replacement. For full details of the Abpromise,

please visit <https://www.abcam.com/abpromise> or contact our technical team.

## **Terms and conditions**

---

- Guarantee only valid for products bought direct from Abcam or one of our authorized distributors