

## Product datasheet

# Anti-ZWINT antibody [EPR10905] ab174266

Recombinant RabMAb

3 Images

### Overview

<b>Product name</b>	Anti-ZWINT antibody [EPR10905]
<b>Description</b>	Rabbit monoclonal [EPR10905] to ZWINT
<b>Host species</b>	Rabbit
<b>Tested applications</b>	<b>Suitable for:</b> WB, IP <b>Unsuitable for:</b> Flow Cyt, ICC/IF or IHC-P
<b>Species reactivity</b>	<b>Reacts with:</b> Human
<b>Immunogen</b>	Synthetic peptide. This information is proprietary to Abcam and/or its suppliers.
<b>Positive control</b>	MOLT4, A431, Raji and HeLa cell lysates. Immunoprecipitation pellet from Molt-4 cell lysate.
<b>General notes</b>	<p>This product is a recombinant monoclonal antibody, which offers several advantages including:</p> <ul style="list-style-type: none"><li>- High batch-to-batch consistency and reproducibility</li><li>- Improved sensitivity and specificity</li><li>- Long-term security of supply</li><li>- Animal-free production</li></ul> <p>For more information <a href="#">see here</a>.</p> <p>Our RabMAb<sup>®</sup> technology is a patented hybridoma-based technology for making rabbit monoclonal antibodies. For details on our patents, please refer to <a href="#">RabMAb<sup>®</sup> patents</a>.</p> <p>Mouse, Rat: We have preliminary internal testing data to indicate this antibody may not react with these species. Please contact us for more information.</p>

### Properties

<b>Form</b>	Liquid
<b>Storage instructions</b>	Shipped at 4°C. Store at +4°C short term (1-2 weeks). Upon delivery aliquot. Store at -20°C long term. Avoid freeze / thaw cycle.
<b>Storage buffer</b>	pH: 7.20 Preservative: 0.01% Sodium azide Constituents: 9% PBS, 40% Glycerol (glycerin, glycerine), 0.05% BSA, 50% Tissue culture supernatant
<b>Purity</b>	Tissue culture supernatant

<b>Clonality</b>	Monoclonal
<b>Clone number</b>	EPR10905
<b>Isotype</b>	IgG

## Applications

**The Abpromise guarantee** Our **Abpromise guarantee** covers the use of ab174266 in the following tested applications. The application notes include recommended starting dilutions; optimal dilutions/concentrations should be determined by the end user.

Application	Abreviews	Notes
WB		1/1000 - 1/10000. Predicted molecular weight: 31 kDa.
IP		1/10 - 1/100.

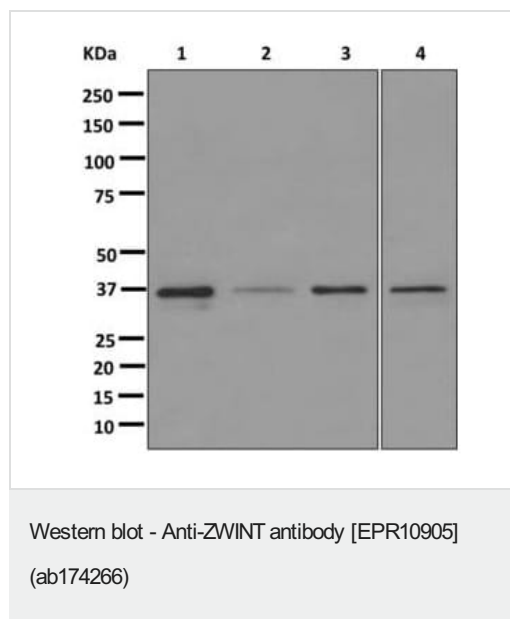
**Application notes** Is unsuitable for Flow Cyt, ICC/IF or IHC-P.

## Target

**Function** Part of the MIS12 complex, which is required for kinetochore formation and spindle checkpoint activity. Required to target ZW10 to the kinetochore at prometaphase.

**Cellular localization** Nucleus. Chromosome > centromere > kinetochore. Localizes to kinetochores from late prophase to anaphase.

## Images



**All lanes** : Anti-ZWINT antibody [EPR10905] (ab174266) at 1/1000 dilution

**Lane 1** : MOLT4 cell lysates

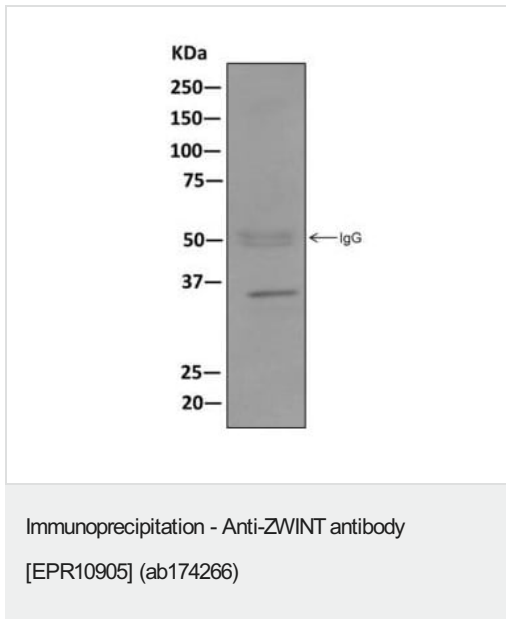
**Lane 2** : A431 cell lysate

**Lane 3** : Raji cell lysates

**Lane 4** : HeLa cell lysates





Lysates/proteins at 10 µg per lane.

**Predicted band size:** 31 kDa



Western blot analysis on immunoprecipitation pellet from Molt-4 cell lysate using ab174266 at a 1/10 dilution.

Why choose a recombinant antibody?

 <p><b>Research with confidence</b> Consistent and reproducible results</p>	 <p><b>Long-term and scalable supply</b> Recombinant technology</p>
 <p><b>Success from the first experiment</b> Confirmed specificity</p>	 <p><b>Ethical standards compliant</b> Animal-free production</p>

Anti-ZWINT antibody [EPR10905] (ab174266)

**Please note:** All products are "FOR RESEARCH USE ONLY. NOT FOR USE IN DIAGNOSTIC PROCEDURES"

### Our Promise to you: Quality guaranteed and expert technical support

- Replacement or refund for products not performing as stated on the datasheet
- Valid for 12 months from date of delivery
- Response to your inquiry within 24 hours
- We provide support in Chinese, English, French, German, Japanese and Spanish
- Extensive multi-media technical resources to help you
- We investigate all quality concerns to ensure our products perform to the highest standards

If the product does not perform as described on this datasheet, we will offer a refund or replacement. For full details of the Abpromise, please visit <https://www.abcam.com/abpromise> or contact our technical team.

### **Terms and conditions**

---

- Guarantee only valid for products bought direct from Abcam or one of our authorized distributors