




Product datasheet

Anti-ZZEF1 antibody ab176594

[1 References](#) [1 Image](#)

Overview

Product name	Anti-ZZEF1 antibody
Description	Rabbit polyclonal to ZZEF1
Host species	Rabbit
Tested applications	Suitable for: IP
Species reactivity	Reacts with: Human Predicted to work with: Mouse 
Immunogen	Synthetic peptide within Human ZZEF1 aa 525-575. The exact sequence is proprietary. NP_055928.3 Sequence: GKPLQL TLQACDVKGK EDKSGPENLL VEPWTRDGFL TETGKTRAST IFSTG Database link: O43149  Run BLAST with  Run BLAST with
Positive control	293T whole cell lysates.
General notes	<p>The Life Science industry has been in the grips of a reproducibility crisis for a number of years. Abcam is leading the way in addressing this with our range of recombinant monoclonal antibodies and knockout edited cell lines for gold-standard validation. Please check that this product meets your needs before purchasing.</p> <p>If you have any questions, special requirements or concerns, please send us an inquiry and/or contact our Support team ahead of purchase. Recommended alternatives for this product can be found below, along with publications, customer reviews and Q&As</p>

Properties

Form	Liquid
Storage instructions	Shipped at 4°C. Store at +4°C short term (1-2 weeks). Upon delivery aliquot. Store at -20°C long term. Avoid freeze / thaw cycle.
Storage buffer	pH: 7 Preservative: 0.09% Sodium azide Constituent: 99% Tris citrate/phosphate

	pH 7 to 8
Purity	Immunogen affinity purified
Clonality	Polyclonal
Isotype	IgG

Applications

The Abpromise guarantee Our **Abpromise guarantee** covers the use of ab176594 in the following tested applications.

The application notes include recommended starting dilutions; optimal dilutions/concentrations should be determined by the end user.

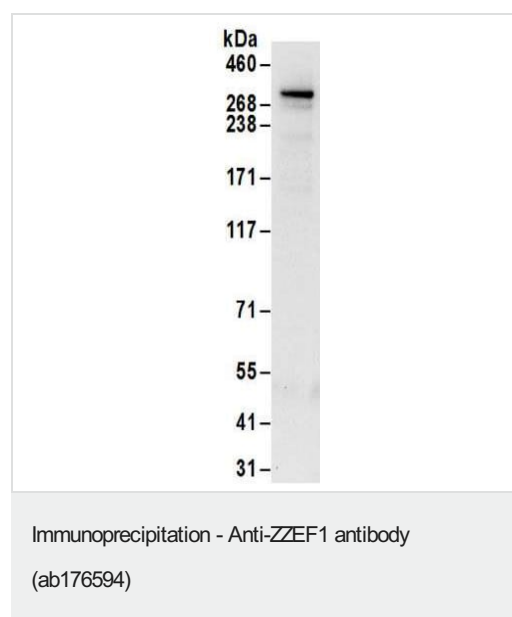
Application	Abreviews	Notes
IP		Use at 2-10 µg/mg of lysate. ab176594 not performed satisfactorily when used for WB of ZZEF1 in crude preparations (e.g. whole cell lysate), however can be used for WB of enriched (e.g. immunoprecipitated) sources of ZZEF1.

Target

Tissue specificity Expressed at low levels in cerebellum.

Sequence similarities Contains 1 DOC domain.
Contains 1 EF-hand domain.
Contains 2 ZZ-type zinc fingers.

Images



Detection of ZZEF1 by Western Blot of Immunoprecipitate.
ab176594 at 0.4µg/ml labeling ZZEF1 in 293T whole cell lysate immunoprecipitated using ab176594 at 6µg/mg lysate (1 mg/IP; 20% of IP loaded/lane). Detection: Chemiluminescence with exposure time of 10 seconds.

Please note: All products are "FOR RESEARCH USE ONLY. NOT FOR USE IN DIAGNOSTIC PROCEDURES"

Our Abpromise to you: Quality guaranteed and expert technical support

- Replacement or refund for products not performing as stated on the datasheet
- Valid for 12 months from date of delivery
- Response to your inquiry within 24 hours
- We provide support in Chinese, English, French, German, Japanese and Spanish
- Extensive multi-media technical resources to help you
- We investigate all quality concerns to ensure our products perform to the highest standards

If the product does not perform as described on this datasheet, we will offer a refund or replacement. For full details of the Abpromise, please visit <https://www.abcam.com/abpromise> or contact our technical team.

Terms and conditions

- Guarantee only valid for products bought direct from Abcam or one of our authorized distributors