

Product datasheet

Native Chlamydia trachomatis protein ab123998

1 Image

Description

Product name	Native Chlamydia trachomatis protein
Expression system	Native
Protein length	Full length protein
Animal free	No
Nature	Native

Specifications

Our **Abpromise guarantee** covers the use of **ab123998** in the following tested applications.

The application notes include recommended starting dilutions; optimal dilutions/concentrations should be determined by the end user.

Form Liquid

Additional notes Inactivation: Heat treatment and 0.05% Triton x-100. Tested inactive by two blind passages on permissive cells showing no signs of inclusion bodies.

This protein is derived from a pathogenic organism, and may be involved in a disease process, consequently exposure may have adverse health effects.

Abcam has not and does not intend to apply for the REACH Authorisation of customers' uses of products that contain European Authorisation list (Annex XIV) substances.

It is the responsibility of our customers to check the necessity of application of REACH Authorisation, and any other relevant authorisations, for their intended uses.

Preparation and Storage

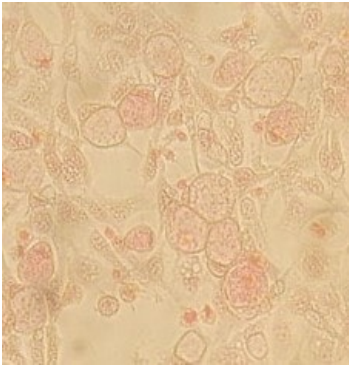
Stability and Storage Shipped on dry ice. Upon delivery aliquot and store at -80°C. Avoid freeze / thaw cycles.
pH: 7
Constituents: 99% PBS, 0.05% Triton-X-100

General Info

Relevance Chlamydia trachomatis is an intracellular organism. Chlamydia usually infects the cervix and fallopian tubes of women and the urethra of men. Chlamydial infections are believed to be one of

the most common of all STDs. It is generally thought that in a population of 15 million, there are up to 300,000 cases of chlamydia each year. Thus, there are many undiagnosed cases of chlamydia in the community. It has been estimated that the true prevalence of chlamydia in the sexually active population may be in the order of 5% to 10%. Chlamydia is one of the leading causes of blindness in underdeveloped countries.

Images



ab123998 shows fixed and stained McCoy cells infected with Chlamydia trachomatis

Immunohistochemistry (Formalin/PFA-fixed paraffin-embedded sections) - Native Chlamydia trachomatis protein (ab123998)

Please note: All products are "FOR RESEARCH USE ONLY. NOT FOR USE IN DIAGNOSTIC PROCEDURES"

Our Abpromise to you: Quality guaranteed and expert technical support

- Replacement or refund for products not performing as stated on the datasheet
- Valid for 12 months from date of delivery
- Response to your inquiry within 24 hours
- We provide support in Chinese, English, French, German, Japanese and Spanish
- Extensive multi-media technical resources to help you
- We investigate all quality concerns to ensure our products perform to the highest standards

If the product does not perform as described on this datasheet, we will offer a refund or replacement. For full details of the Abpromise, please visit <https://www.abcam.com/abpromise> or contact our technical team.

Terms and conditions

- Guarantee only valid for products bought direct from Abcam or one of our authorized distributors