

Product datasheet

Native human Cathepsin G protein ab91122

[1 References](#) [1 Image](#)

Description

Product name	Native human Cathepsin G protein
Biological activity	Activity: 2-4 units per mg protein. One unit is defined as the amount of enzyme that hydrolyzes one μ mole of Suc-Ala-Ala Pro-Phe-pNA (1 mM) per minute at 25°C in 160 mM Tris-HCl, pH 7.4, with 1.6 M NaCl.
Purity	> 95 % SDS-PAGE.
Expression system	Native
Protein length	Full length protein
Animal free	No
Nature	Native
Species	Human

Specifications

Our **Abpromise guarantee** covers the use of **ab91122** in the following tested applications.

The application notes include recommended starting dilutions; optimal dilutions/concentrations should be determined by the end user.

Applications	Functional Studies SDS-PAGE
Form	Lyophilized
Additional notes	Protein Determination: Extinction Coefficient (E) 0.1% at 280nm, 1cm pathway = 0.66. Prepared from whole blood shown to be non reactive for HBsAg, anti-HCV, anti- HBc, and negative for anti-HIV 1 & 2 by FDA approved tests.

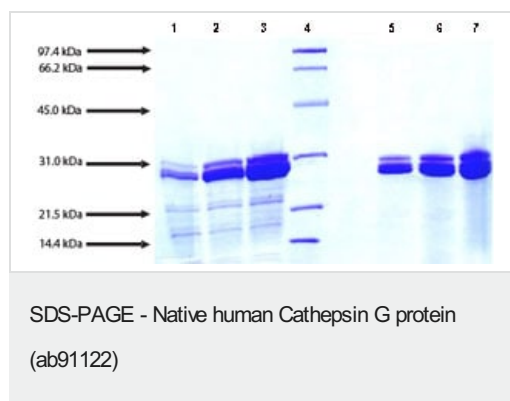
Preparation and Storage

Stability and Storage	Shipped at 4°C. Store at -20°C. This product is an active protein and may elicit a biological response in vivo, handle with caution.
Reconstitution	Centrifuge the vial prior to opening. Reconstitute in 150 mM sodium acetate (pH 5.5), 150 mM NaCl.

General Info

Function	Serine protease with trypsin- and chymotrypsin-like specificity. Cleaves complement C3. Has antibacterial activity against the Gram-negative bacterium <i>P.aeruginosa</i> , antibacterial activity is inhibited by LPS from <i>P.aeruginosa</i> , Z-Gly-Leu-Phe-CH ₂ Cl and phenylmethylsulfonyl fluoride.
Sequence similarities	Belongs to the peptidase S1 family. Contains 1 peptidase S1 domain.
Cellular localization	Cell surface.

Images



SDS-PAGE: 12% Tris-HCl gel

Lane 1. 5 µg Cathepsin G (reduced/heated)

Lane 2. 10 µg Cathepsin G (reduced/heated)

Lane 3. 20 µg Cathepsin G (reduced/heated)

Lane 4. Molecular weight markers

Lane 5. 5 µg Cathepsin G (non-reduced/no heat)

Lane 6. 10 µg Cathepsin G (non-reduced/no heat)

Lane 7. 20 µg Cathepsin G (non-reduced/no heat)

Please note: All products are "FOR RESEARCH USE ONLY. NOT FOR USE IN DIAGNOSTIC PROCEDURES"

Our Abpromise to you: Quality guaranteed and expert technical support

- Replacement or refund for products not performing as stated on the datasheet
- Valid for 12 months from date of delivery
- Response to your inquiry within 24 hours
- We provide support in Chinese, English, French, German, Japanese and Spanish
- Extensive multi-media technical resources to help you
- We investigate all quality concerns to ensure our products perform to the highest standards

If the product does not perform as described on this datasheet, we will offer a refund or replacement. For full details of the Abpromise, please visit <https://www.abcam.com/abpromise> or contact our technical team.

Terms and conditions

- Guarantee only valid for products bought direct from Abcam or one of our authorized distributors