

Product datasheet

Recombinant Bacteriophage P1 Cre recombinase protein ab134845

[1 References](#) [1 Image](#)

Description

Product name	Recombinant Bacteriophage P1 Cre recombinase protein	
Purity	> 90 % SDS-PAGE. ab134845 is chromatographically purified.	
Expression system	Escherichia coli	
Accession	<u>P06956</u>	
Protein length	Full length protein	
Animal free	No	
Nature	Recombinant	
Species	Bacteriophage P1	
Sequence	<pre>MASMTGGQQM GRGHHHHHHG NLYFQGGEFF PKKKRKVSNL LTVHQNLPAL PVDATSDEVR KNLMDFRDR QAFSEHTWKM LLSVCRSWAA WCKLNNRKWF PAEPEDVRDY LLYLQARGLA VKTIQQHLGQ LNMLHRRSGL PRPSDSNAVS LVMRRIRKEN VDAGERAKQA LAFERTDFDQ VRSLMENS DR CQDIRNLAFL GIAYNLLRI AEIARIRVKD ISRTDGGRML IHIGRTKTLV STAGVEKALS LGVTKLVERW ISVSGVADDP NNYLFCRVRK NGVAAPSATS QLSTRALEGI FEATHRLIYG AKDDSGQRYL AWSGHSARVG AARDMARAGV SIPEIMQAGG WTNVNVMNY IRNLDSETGA MVRLLLEDGDL EESGGGGSPG RRRRRRRRRR R</pre>	
Amino acids	2 to 343	
Additional sequence information	N-terminal T7 tag/His/TEV cleavage site tag and C-terminal 11R tag.	

Specifications

Our **Abpromise guarantee** covers the use of **ab134845** in the following tested applications.

The application notes include recommended starting dilutions; optimal dilutions/concentrations should be determined by the end user.

Applications	Functional Studies
	SDS-PAGE

Form	Liquid
Additional notes	<p>Applications:</p> <ol style="list-style-type: none"> 1. Protein intracellular transduction for in vitro Cre-loxP recombination. 2. Negative control for 11R-Tag human transcription factor mediated cell differentiation assay in vitro. <p>Functional Assay: Mix 1µg Cre-11R protein with 2ul ProFectin™ by following ProFectin™ manufacture suggested protocol, and incubate transfection mixture on 0.25 x10⁶ 293-LoxP-eGFP cell line / well (6 well plate) for 30 min in serum free medium, will achieve > 35% transduction efficiency. (Positive for GFP cells).</p>

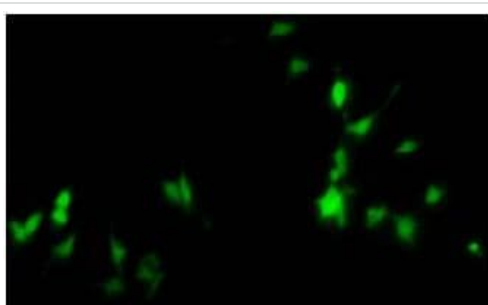
Preparation and Storage

Stability and Storage	<p>Shipped at 4°C. Upon delivery aliquot. Store at -80°C. Avoid freeze / thaw cycle.</p> <p>pH: 8.00</p> <p>Constituents: 0.02% DTT, 0.32% Tris HCl, 0.58% Sodium chloride, 0.08% Potassium chloride, 10% Glycerol</p>
------------------------------	--

General Info

Relevance	<p>Cre-recombinase is a 38 kDa DNA recombinase derived from the P1 bacteriophage. It is highly specific for a 34 bp DNA sequence (loxP) found in P1 DNA. It catalyzes site-specific recombination between two 34-base-pair LOXP sites. Its role is to maintain the phage genome as a monomeric unit-copy plasmid in the lysogenic state. It is homotetramer when bound to DNA and belongs to the "phage" integrase family.</p>
------------------	--

Images



Analysis of 0.25 x10⁶ 293-LoxP-eGFP report cell line with 1 µg ab134845. Cells were cultivated overnight before viewing GFP positive cells.

Functional Studies - Recombinant bacteriophage p1
Cre recombinase protein (ab134845)

Please note: All products are "FOR RESEARCH USE ONLY. NOT FOR USE IN DIAGNOSTIC PROCEDURES"

Our Abpromise to you: Quality guaranteed and expert technical support

- Replacement or refund for products not performing as stated on the datasheet
- Valid for 12 months from date of delivery
- Response to your inquiry within 24 hours

- We provide support in Chinese, English, French, German, Japanese and Spanish
- Extensive multi-media technical resources to help you
- We investigate all quality concerns to ensure our products perform to the highest standards

If the product does not perform as described on this datasheet, we will offer a refund or replacement. For full details of the Abpromise, please visit <https://www.abcam.com/abpromise> or contact our technical team.

Terms and conditions

- Guarantee only valid for products bought direct from Abcam or one of our authorized distributors