

Product datasheet

Recombinant E. coli map protein ab106876

1 Image

Description

Product name	Recombinant E. coli map protein
Purity	> 90 % SDS-PAGE. ab106876 was purified using conventional chromatography techniques.
Expression system	Escherichia coli
Accession	<u>P0AE18</u>
Protein length	Full length protein
Animal free	No
Nature	Recombinant
Species	Escherichia coli
Sequence	MGSSHHHHHHSSGLVPRGSH MAISIKTPEDIEKMRVAGR LAAEVLEMIEP YKPGVSTGELDRICNDYVNEQHAVSACLGYPKSVCI SINEVVCHG IPDDAKLLKGDIVNIDVTVIKDGFGDTSKMFVGKPTIMG ERLCRITQ ESLYALRMVKPGINLREIGAAIQKFVEAEGFSVVREYCGH GIGRGFHEE PQVLHYDSRETNVVLKPGMTFTIEPMVNAGKKEIRTMKDG WTVKTKDRSL SAQYEHTIVTDNGCEILTRKDDTIPAIISHDE
Predicted molecular weight	32 kDa including tags
Amino acids	1 to 264
Tags	His tag N-Terminus
Description	Recombinant <i>E. coli</i> map protein

Specifications

Our **Abpromise guarantee** covers the use of **ab106876** in the following tested applications.

The application notes include recommended starting dilutions; optimal dilutions/concentrations should be determined by the end user.

Applications	Mass Spectrometry SDS-PAGE
--------------	-------------------------------

Mass spectrometry	MALDI-TOF
Form	Liquid

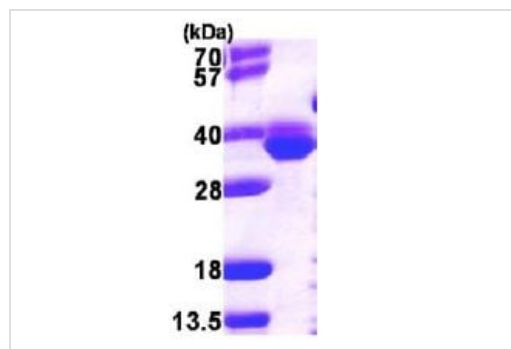
Preparation and Storage

Stability and Storage	Shipped at 4°C. Store at +4°C short term (1-2 weeks). Upon delivery aliquot. Store at -20°C or -80°C. Avoid freeze / thaw cycle. pH: 8.00 Constituents: 0.0308% DTT, 0.316% Tris HCl, 10% Glycerol (glycerin, glycerine)
------------------------------	--

General Info

Relevance	map (Methionine aminopeptidase) removes the amino-terminal methionine from nascent proteins.
------------------	--

Images



15% SDS-PAGE analysis of 3 µg ab106876.

SDS-PAGE - Recombinant *E. coli* map protein
(ab106876)

Please note: All products are "FOR RESEARCH USE ONLY. NOT FOR USE IN DIAGNOSTIC PROCEDURES"

Our Abpromise to you: Quality guaranteed and expert technical support

- Replacement or refund for products not performing as stated on the datasheet
- Valid for 12 months from date of delivery
- Response to your inquiry within 24 hours
- We provide support in Chinese, English, French, German, Japanese and Spanish
- Extensive multi-media technical resources to help you
- We investigate all quality concerns to ensure our products perform to the highest standards

If the product does not perform as described on this datasheet, we will offer a refund or replacement. For full details of the Abpromise, please visit <https://www.abcam.com/abpromise> or contact our technical team.

Terms and conditions

- Guarantee only valid for products bought direct from Abcam or one of our authorized distributors